

*American*  
CREMATORY EQUIPMENT CO.



14530

*American*  
CREMATORY EQUIPMENT CO.



ACE | AMERICAN  
Controls & Equipment

**AMERICAN**  
CREMATORY

**Manufacturing  
with Pride**

Sales ✦ Service ✦ Supplies ✦ Repairs





## *The American Advantage*

American Crematory Equipment Company is considered the premier manufacturing, service, and repair company in North America and beyond. We have been Manufacturing with Pride™ since our incorporation in 1974. We manufacture, service, and repair with the highest standards and integrity in the industry.

It is with our Manufacturing with Pride™ commitment that we at American Crematory can bring you, our customers, the latest in technology. Our State-of-the-art Operating Platforms and innovative design and engineering insure you receive the most dependable, reliable, environmentally conscious, cost-effective, and longest lasting equipment with the best warranty on the market today.

***Our Philosophy "Service is Everything"™*** is simple; always put the customer needs first, have integrity in every aspect of customer service, and be reliable.

Our entire team pride themselves on listening to what the customers' needs are and being committed to complete success. Everyone at American Crematory Equipment Company practices Service Is Everything™ and it is what sets us apart from the competition.



Dear Crematory Owner/Manager,

American Crematory Equipment Company would like to acknowledge you and introduce you to our products and services.

American Crematory Manufactures with Pride™ an extensive line of human and pet cremation equipment. Our equipment has been engineered and developed using our vast knowledge and experience in the cremation industry starting as early as the 1960's.

From conception to completion the cremation equipment you purchase from American Crematory is designed with the utmost integrity. We pride ourselves on enduring strength, high-quality materials, superior craftsmanship, and intelligent engineering. We Manufacture with Pride™ a wide range of models to suit every client's specific needs. Whether it's an entry-level model with electromechanical (manual) controls or our top-of-the-line, fully-automated, self-monitored oxygen & fuel controlled "ARIES" model designed for high volume continuous production, we have what you need. Our equipment is attractive, functional, efficient, and considered to be one of the best on the market today.

American Crematory provides various options from simply supplying equipment, to turn-key solutions and installation options, where we handle the entire process of permit, to installation, and start-up. Our team is one of the most knowledgeable in the industry with over 75 years of combined knowledge and experience. We will work with you through every step of design, production, installation, start-up, and training of your new cremation equipment. After the installation we will be available to you 24/7.

Our equipment is Manufactured with Pride™ to include UL listing and NFPA Standards for safety. Our equipment can be installed in a dedicated building or installed as an internal part of your facility. American Crematory considers your new equipment purchase an investment on both our parts and we stake our reputation on each and every model and product we produce.

In closing, doing business with American Crematory Equipment Company assures you the highest quality of manufacturing, workmanship, technology, and customer service in the industry. Please feel free to call us at any time with any questions you may have. We look forward to working with you and providing you with the Service is Everything™ philosophy for all of your cremation needs.

We wish to thank all of our continued clients for their loyalty and placing their trust in our team.

Sincerely Appreciated,

AMERICAN CREMATORY EQUIPMENT COMPANY



# Manufacturing with Pride

## Table of Contents

<b>Cremation Equipment: Human</b>	4 - 8
<b>Cremation Equipment: Pet</b>	9 - 15
<b>American Crematory Operating Systems</b>	16
<b>Guardian D.A.S. System</b>	17
<b>ACE Controls &amp; Equipment</b>	18
<b>Operator Training &amp; Certification Programs</b>	19
<b>Service</b>	20
<b>Repairs</b>	21
<b>AC-1 Cremator Charger</b>	22
<b>Hydraulic Lift Tables</b>	23
<b>Electric Cremated Remains Processors</b>	24, 25
<b>Storage &amp; Cooling Racks</b>	26
<b>Coolers &amp; Custom Rack Systems</b>	27
<b>Refractory Lined &amp; Stainless Steel Stack Options</b>	28
<b>Containers, Discs, &amp; Rollers</b>	29
<b>Cremation Tools</b>	30
<b>Ash &amp; Transfer Pans</b>	31
<b>Spare Parts</b>	32, 33
<b>Safety Equipment</b>	34 - 37
<b>Index</b>	38



## Contact Information

### Corporate Headquarters

14530 Anson Avenue  
Santa Fe Springs, CA 90670

### Toll Free

(800) 396-2254

### Phone

(562) 926-2876

### Fax

(562) 926-2880

### Visit us online at

[www.AmericanCrematory.com](http://www.AmericanCrematory.com)

We Accept



Mike Burwell

CEO

[mike@americancrematory.com](mailto:mike@americancrematory.com)

John Raggett

Vice President

[john@americancrematory.com](mailto:john@americancrematory.com)

Britnie Moniz

Western Division Sales

[britnie@americancrematory.com](mailto:britnie@americancrematory.com)

### Supplies

[orders@americancrematory.com](mailto:orders@americancrematory.com)

### Accounting

[admin@americancrematory.com](mailto:admin@americancrematory.com)



"Like" Us on Facebook:  
[www.facebook.com/americancrematory](http://www.facebook.com/americancrematory)



Follow us on  
**Instagram**  
[www.instagram.com/americancrematoryequipmentco/](http://www.instagram.com/americancrematoryequipmentco/)



**YouTube**  
► Search American Crematory



**1200 lb Case Capacity**

**New!**

## Human Cremation Equipment

### Model A-375-S5 "Hot Hearth" Cremation Equipment

The A-375-S5 is our Super Duty Cremator. It features a super large primary chamber and a uniquely designed multi-faceted secondary chamber. The A-375 has a chamber capacity of 1200 lbs. The average cremation time is approximately 70 minutes or less and can perform back to back cremations with no cool down between cremations. This is our most advanced, fully automated model manufactured.

9'8"  
(2.95m)

#### Control Systems Available:

- ACS-1 PLC & Touchscreen
- American Instant Access
- ARIES Operating System
- Guardian D.A.S.



#### A-375-S5 Specifications

Height	9'8" (2.95m)
Length	14'3" (4.34m)
Width	9'0" (2.74m)
Door Width	45" (1.14m)
Weight	42,000 Lbs. (19,051 kg)
Installation Clearance Required	8' min. (2.44m)
Fuel	Natural Gas, Propane, Butane, Can be Modified to Accept Diesel Oil
Electrical	220V/60Hz/1 Phase or 3 Phase (Nationally) 240/480 1 Phase or 3 Phase (Internationally)
Maximum Fuel Rating	3 MM BTU/HR
Panel	Right, Left or Remote
Warranty	2 year "Best in Class"

Available in a wide range of colors allowing you or our team to design a comforting setting for your customers.

*Lease & Finance Options Available*





## Human Cremation Equipment

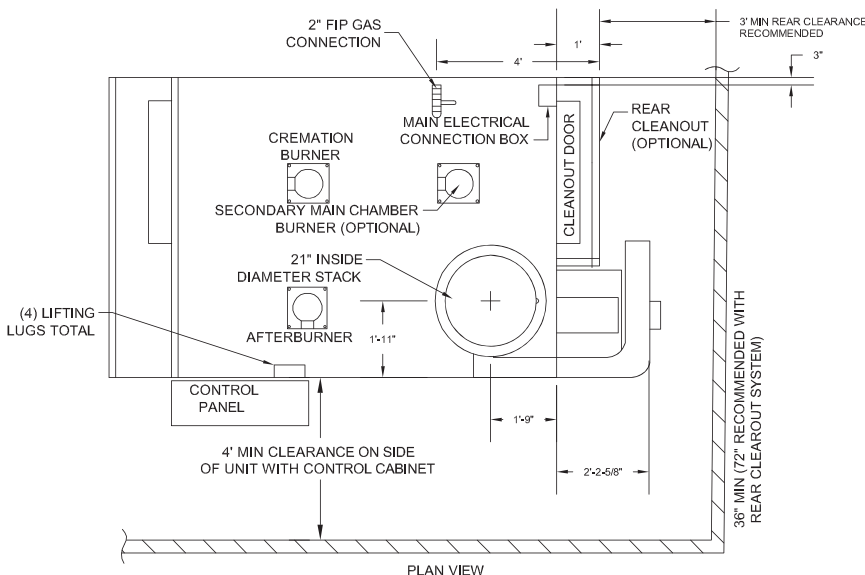
### Model A-350 "Hot Hearth" Cremation Equipment

The American A-350 is designed for facilities with high volume and production requirements. It implements the Trilogy Combustion System, the most advanced flame safety control in the industry (made by Siemens). The multi-chamber design allows for rapid cremation time of approximately 100 minutes or less. The A-350 also has the advantage of many design options to accommodate your specific installation needs.

Unique design features available on the A-350 include automatic monitoring combustion control (ensuring maximum efficiency) oversized loading door and the Vortex exhaust stream opacity control system. The A-350 also incorporates a unique ash pancooling system featuring integrated air jets to reduce the cremated remains cool down time prior to processing.

#### Control Systems Available:

- American Standard
- ACS-1 PLC & Touchscreen
- American Instant Access
- ARIES Operating System
- Guardian D.A.S.



#### A-350 Specifications

Height	9'5" (2.74m)
Length	12'5" (3.78m); 14'6" (4.42m) with Blower
Width	8'0" (2.44m); 9'0" (2.74m) with Panel
Door Width	45" (1.14m)
Weight	38,000 Lbs. (17,237 kg)
Installation Clearance Required	8' min. (2.44m)
Fuel	Natural Gas, Propane, Butane, Can be Modified to Accept Diesel Oil
Electrical	220V/60Hz/1 Phase or 3 Phase (Nationally) 240/480 1 Phase or 3 Phase (Internationally)
Maximum Fuel Rating	2.5 MM BTU/HR @2380 CFH
Panel	Right, Left or Remote
Warranty	2 year "Best in Class"

Available in a wide range of colors allowing you or our team to design a comforting setting for your customers.

*Lease & Finance Options Available*



**800 lb Case Capacity**



## Human Cremation Equipment

### Model A-300

### "Hot Hearth" Cremation Equipment

The A-300 is built for volume and production with an average cremation time of 90 minutes or less. It implements the Trilogy Combustion System, the most advanced flame safety control in the industry (made by Siemens). The Trilogy System's remote display provides pinpoint diagnostic information, making troubleshooting immediate and accurate.

The A-300 is a very versatile crematory in our product line. The A-300 has the ability to accommodate a variety of operating and installation configurations. The A-300 is a multi-chamber cremator designed to cremate oversized cases and hardwood caskets.

The A-300 also incorporates a unique ash pan cooling system featuring integrated air jets to reduce the cremated remains cool down time prior to processing.

### Minimize Downtime

With the American "Trilogy" Combustion Control System (shown here) you get the advantage of increased fuel efficiency, advanced monitoring and diagnostic capabilities. The "Trilogy" system allows for immediate and accurate troubleshooting, decreasing and/or eliminating costly down time. American Crematory Equipment Company is proud to offer a wide range of operating systems and technology to meet every customer's needs.

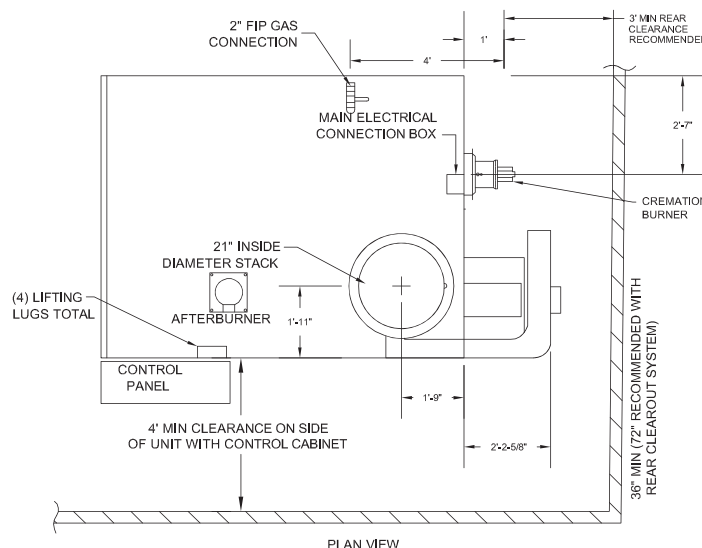


### A-300 Specifications

<b>Height</b>	9'4" (2.84m)
<b>Length</b>	10'2" (3.10m); 12'6" (3.81m) with Blower
<b>Width</b>	7'0" (2.13m); 8'0" (2.44m) with Panel
<b>Weight</b>	32,000 Lbs. (14,515 kg)
<b>Installation Clearance Required</b>	8' min. (2.44m)
<b>Fuel Rating</b>	Natural Gas, Propane, Butane, Can be Modified to Accept Diesel Oil
<b>Electrical</b>	220V/60Hz/1 Phase or 3 Phase (Nationally) 240/480 1 Phase or 3 Phase (Internationally)
<b>Maximum Fuel Rating</b>	2.5 MM BTU/HR @2380 CFH
<b>Panel</b>	Right, Left or Remote
<b>Warranty</b>	2 year "Best in Class"

Available in a wide range of colors allowing you or our team to design a comforting setting for your customers.

*Lease & Finance Options Available*





# Manufacturing with Pride

## Human Cremation Equipment

### Model A-250 "Hot Hearth" Cremation Equipment

The American A-250 has become one of the most popular models in our product line. It features a large capacity primary chamber and a 45" loading door opening. With the addition of our proprietary operating systems you can rest assured you will be operating one of the most efficient machines available. The A-250 allows first time buyers room for growth as their business increases.

#### Control Systems Available:

- American Standard
- ACS-1 PLC & Touchscreen
- American Instant Access
- ARIES Operating System
- Guardian D.A.S.



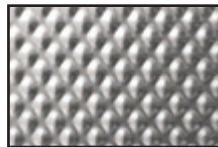
#### Customizable Finishes Available for Each & Every Model



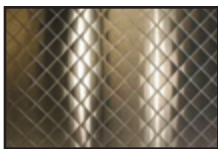
Stainless Steel  
Pattern A1



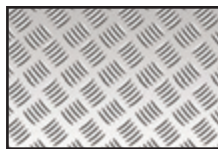
Stainless Steel  
Brushed A2



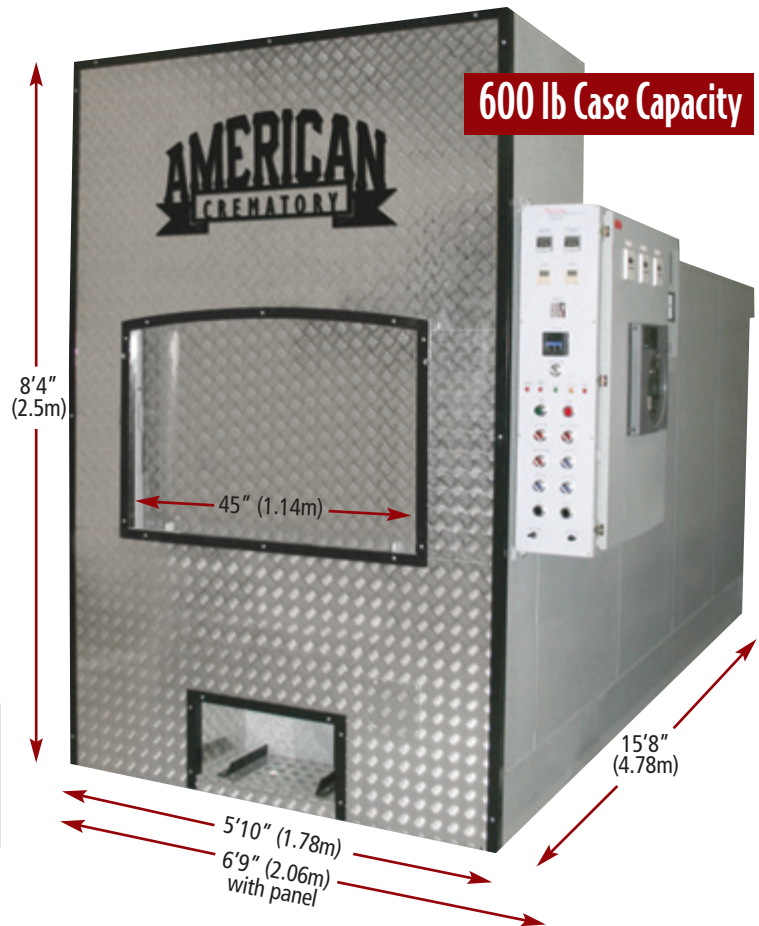
Stainless Steel  
Pattern A3



Stainless Steel  
Pattern A4



Diamond Plate  
5 Bar

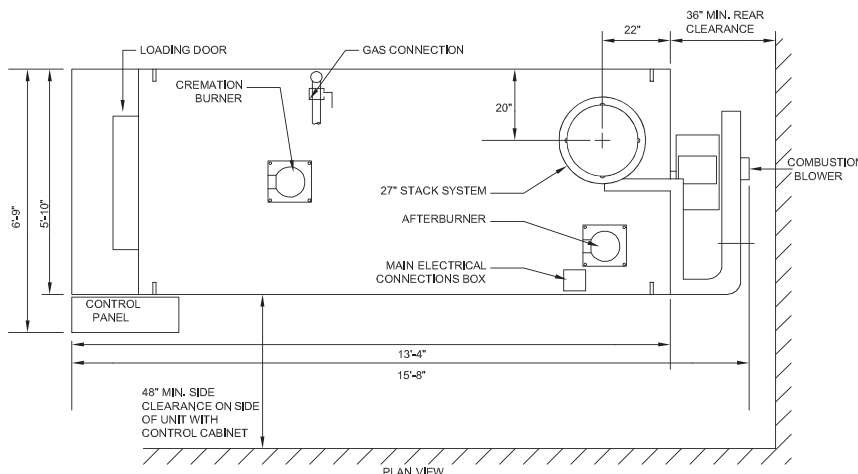


#### A-250 Specifications

Height	8'4" (2.5m)
Length	15'8" (4.57m) with Blower
Width	5'10" (1.78m); 6'9" (2.06m) with Panel
Door Width	45" (1.14m)
Weight	28,000 Lbs. (12,700 kg)
Installation Clearance Required	8' min. (2.44m)
Fuel	Natural Gas, Propane, Butane, Can be Modified to Accept Diesel Oil
Electrical	220V/60Hz/1 Phase or 3 Phase (Nationally) 240/480 1 Phase or 3 Phase (Internationally)
Maximum Fuel Rating	2.25 MM BTU/HR @220 CFH
Panel	Right, Left or Remote
Warranty	2 year "Best in Class"

Available in a wide range of colors allowing you or our team to design a comforting setting for your customers.

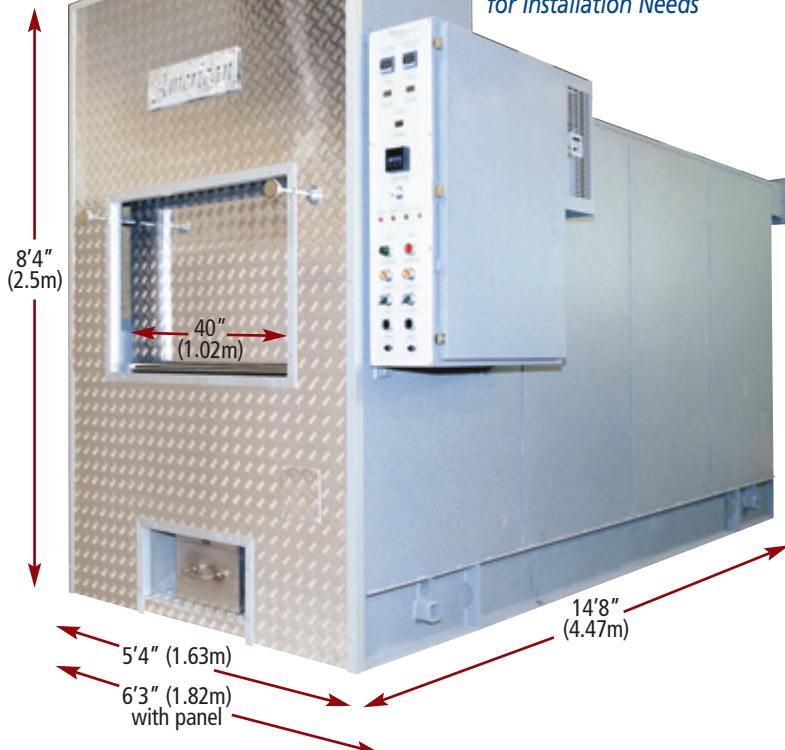
*Lease & Finance Options Available*





**400 lb Case Capacity**

*Removable Door Hood  
for Installation Needs*



## Human Cremation Equipment

### Model A-200

### "Hot Hearth" Cremation Equipment

The American A-200 Model is our entry level cremator. With an average cremation time of approximately 120 minutes or less, the A-200 can easily perform 4 cases per 8-10-hour day. The primary feature on the A-200 is "Throat Air" and "Hearth Air" Control. Throat Air allows the operator the ability to effectively control and eliminate stack emissions. Hearth Air allows the operator full control of the primary chamber over fire air which effectively decreases cremation times. Additionally the combustion process is cycled and monitored by automatic temperature and timer controls which ensure fuel efficiency.

### Minimize Downtime

With the American "Trilogy" Combustion Control System (shown here) you get the advantage of increased fuel efficiency, advanced monitoring and diagnostic capabilities. The "Trilogy" system allows for immediate and accurate troubleshooting, decreasing and/or eliminating costly down time. American Crematory Equipment Company is proud to offer a wide range of operating systems and technology to meet every customer's needs.

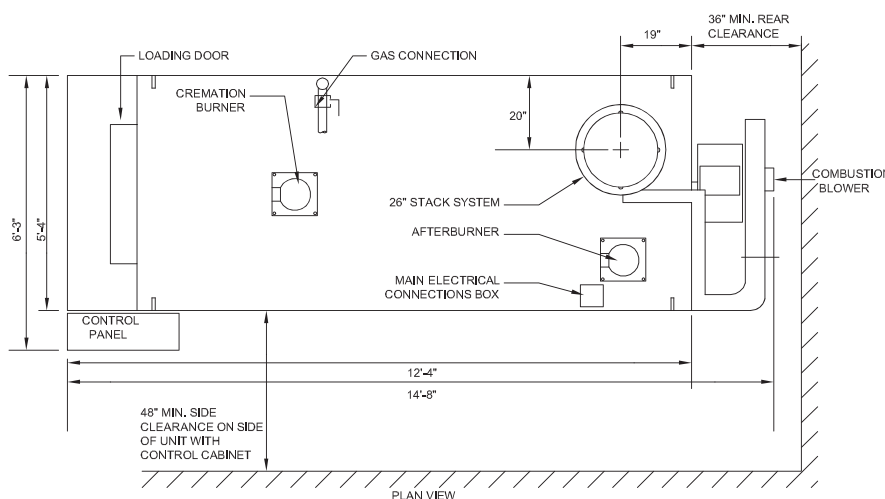


### A-200 Specifications

<b>Height</b>	8'4" (2.5m)
<b>Length</b>	14'8" with blower (4.47m)
<b>Width</b>	5'4" (1.63m); 6'3" with Panel (1.82m)
<b>Door Width</b>	40" (1.02m)
<b>Weight</b>	23,000 Lbs. (10,433 kg)
<b>Installation Clearance Required</b>	8' min. (2.44m)
<b>Fuel</b>	Natural Gas, Propane, Butane, Can be Modified to Accept Diesel Oil
<b>Electrical</b>	220V/60Hz/1 Phase or 3 Phase (Nationally) 240/480 1 Phase or 3 Phase (Internationally)
<b>Maximum Fuel Rating</b>	1.75 MM BTU/HR @ 1666 CFH
<b>Panel</b>	Right, Left or Remote
<b>Warranty</b>	2 year "Best in Class"

Available in a wide range of colors allowing you or our team to design a comforting setting for your customers.

*Lease & Finance Options Available*





# Manufacturing with Pride

## Pet Cremation Equipment

### Multi-Chambered "Hot Hearth" Pet Cremation Equipment

Our Multi-Chamber pet equipment is amongst the finest built Pet Cremation Equipment on the market today. These units can be configured to meet your individual business needs, ranging from a single chamber up to a 10-chambered unit. Each chamber is operated independently and can accommodate 150+ lb. animal. These types of units allow you to grow your pet business with the advantage of having private cremations in each individual chamber, providing peace of mind for your customers.

#### A-400P-8

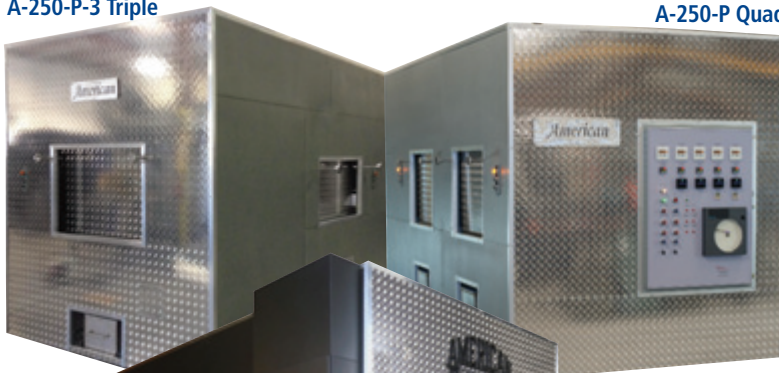
Our A-400P-8 pictured here has 4 chambers on each side. Chamber sizes range from 30" to 58" wide. Our UL Panel Division has engineered and built some of the best control systems on the market today. Customers can choose from a *Manually Controlled System* or a state of the art *Siemens PLC System*.

#### Additional Models

We manufacture our Pet Cremation units in a variety of styles and chamber configurations to help meet the needs of a wide variety of facilities, including:

- Single Side Loading Chambers
- **A-250-P Double:** 2 Chambers
- **A-250-P-3:** 3 Chambers
- **A-250-P Quad:** 4 Chambers
- **A-250-P-5:** 5 Chambers
- **A-250-P-6:** 6 Chambers
- **A-250-P-8:** 8 Chambers

A-250-P-3 Triple



A-250-P-5



#### A-400P-8 Specifications

Height	9'6" (2.895m)
Length	22'10.5" (6.97m)
Width	8'5" with panel (2.56m)
Weight	64,000 Lbs. (29,029 kg)
Installation Clearance Required	10'3" min (3.12m)
Fuel	Natural Gas, Propane, Butane, Can be Modified to Accept Diesel Oil
Electrical	220V/60Hz/1 Phase or 3 Phase (Nationally) 240V/50Hz/1 Phase or 3 Phase (Internationally) 60 AMP Minimum Requirement
Maximum Fuel Rating	6.0MM BTU/HR
Panel	Front or Remote
Warranty	2 year "Best in Class"

Available in a wide range of colors allowing you or our team to design a comforting setting for your customers.

*Lease & Finance Options Available*



## Pet Cremation Equipment

**New!**

### Model A-250P-5

### "Hot Hearth" Cremation Equipment



The American A-250P-5 is Ideal for High-Volume facilities that desire completely private cremations while processing multiple pets at the same time. Our Multi-Chamber units are truly independently operated chambers. The A-250P-5 has one large chamber in the front and two medium chambers on each side. Each chamber has independent combustion control allowing for the operation of a single chamber or any combination of all five chambers. The A-250P-5 will allow your business to achieve a level of service to your clients that is unparalleled. All of the American models come standard with independent hydraulic loading doors, no counterweight or "cooler" style loading doors.

Multi-Chamber units can be wrapped for a very appealing visual experience for your clients while witnessing of private cremations.

### Remains Removal Cart

The animal remains removal cart is of a steel frame construction, finished with a powder coated surface. The large work space allows for easy access to sort through remains.

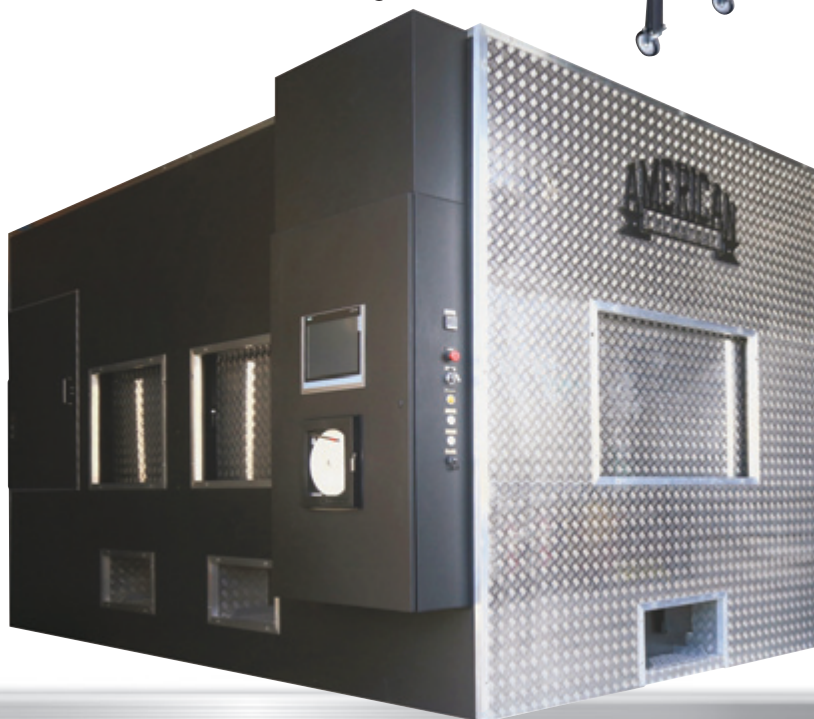


### A-250P-5 Specifications

Height	8'6" (2.59m)
Length	17'0" (5.18m)
Width	7'8" (2.34m); 8'8" with panel (2.64m)
Door Width	40" (1.02m)
Afterchamber Loading Opening	4 @ 29" x 36"; 1 @ 39" x 48"
Weight	38,000 Lbs. (17,237 kg)
Installation Clearance Required	9' min (2.7m); 10' (3.05m) Recommended
Fuel	Natural Gas, Propane, Butane, Can be Modified to Accept Diesel Oil
Electrical	220V/60Hz/1 Phase or 3 Phase (Nationally) 240V/50Hz/1 Phase or 3 Phase (Internationally) 60 AMP Minimum Requirement
Maximum Fuel Rating	4.0 MM BTU/HR @ 3786 CFH
Panel	Right, Left or Remote
Warranty	2 year "Best in Class"

Available in a wide range of colors allowing you or our team to design a comforting setting for your customers.

*Lease & Finance Options Available*





## Pet Cremation Equipment

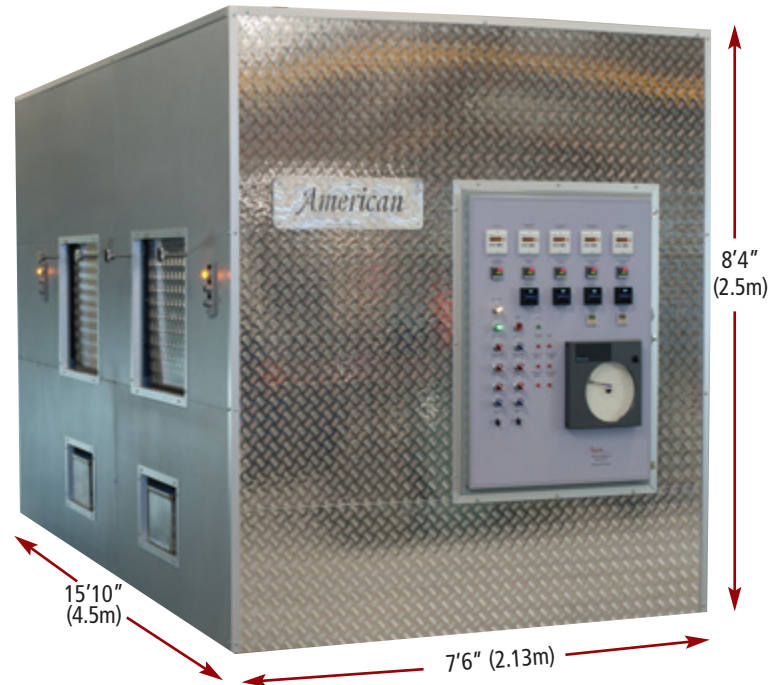
### Model A-250P-Quad "Hot Hearth" Cremation Equipment

American Crematory is proud to introduce the A-250P-Quad. The "Quad" was the first animal crematory with four individual cremation chambers. Each chamber is equipped with its own combustion system which allows each chamber to operate independently of the others.

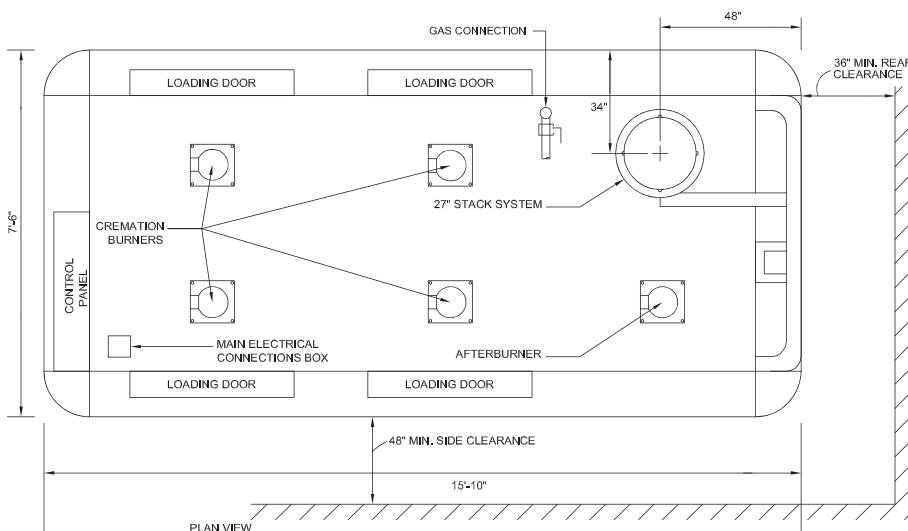
Built on the "Trilogy" platform the A-250P-Quad has the latest in combustion control technology, providing greater efficiency and productivity. With four individual cremation chambers and four individual hydraulic loading doors the Quad is ideal for individual/private cremation and is extremely witness friendly.

#### Remains Removal Cart

The animal remains removal cart is of a steel frame construction, finished with a powder coated surface. The large work space allows for easy access to sort through remains.



## The Original Independently Operated Multi-Chamber Pet Crematory

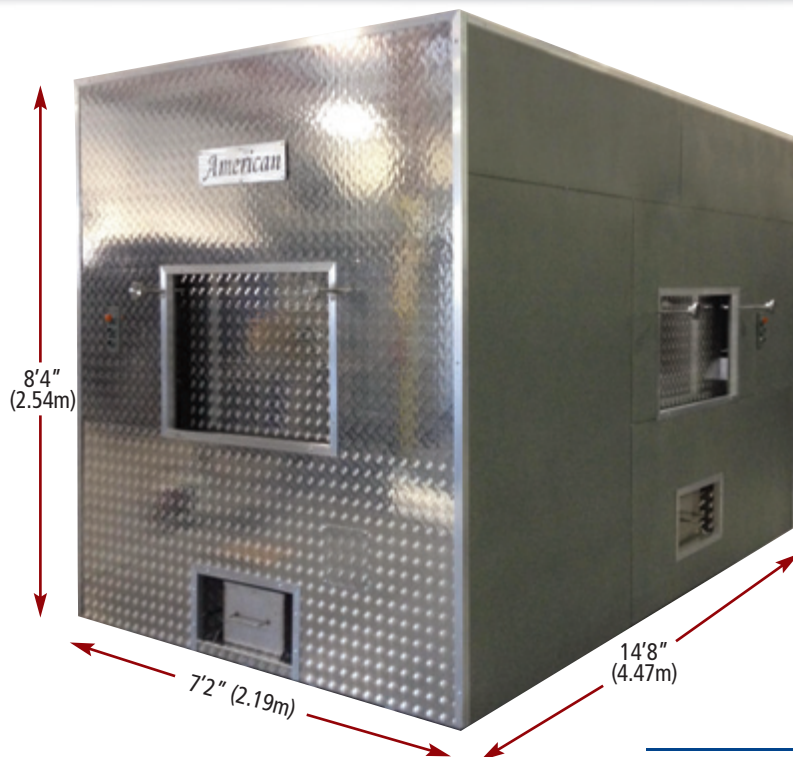


#### A-250P-Quad Specifications

Height	8'4" (2.5m)
Length	15'10" (4.5m)
Width	7'6" (2.13m)
Weight	30,000 Lbs. (13,607 kg)
Installation Clearance Required	8' min. (2.44m)
Fuel	Natural Gas, Propane, Butane, Can be Modified to Accept Diesel Oil
Electrical	220V/60Hz/1 Phase or 3 Phase (Nationally) 240V/50Hz/1 Phase or 3 Phase (Internationally)
Maximum Fuel Rating	3.5 MM BTU/HR @ 3333 CFH
Panel	Right, Left or Remote
Warranty	2 year "Best in Class"

Available in a wide range of colors allowing you or our team to design a comforting setting for your customers.

**Lease & Finance Options Available**



## Pet Cremation Equipment

### Model A-200P-3

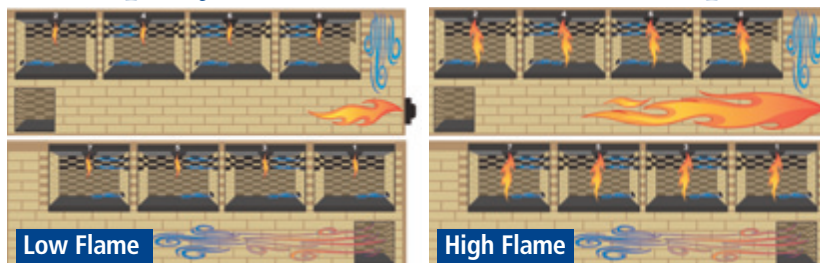
### "Hot Hearth" Cremation Equipment

**New!**

The American A-200P-3 is ideal for facilities that want completely private cremations while processing multiple pets at the same time. Our Multi-Chamber units are configured to meet your specific needs. The "Triple", as it is commonly referred to, has one large chamber in the front and two smaller chambers, one on each side. Each chamber is independently operated. The multi-chamber units give your business an advantage over the competition. All of the American models come standard with independent hydraulic loading doors, no counterweight or "cooler" style loading doors.

Multi-Chamber units can be wrapped for a very appealing visual experience for your clients while witnessing of private cremations. Customers can choose from an electromechanical control system or PLC based control system with Touchscreen.

### Example of Multi-Chamber Pet Unit PLC Graphics

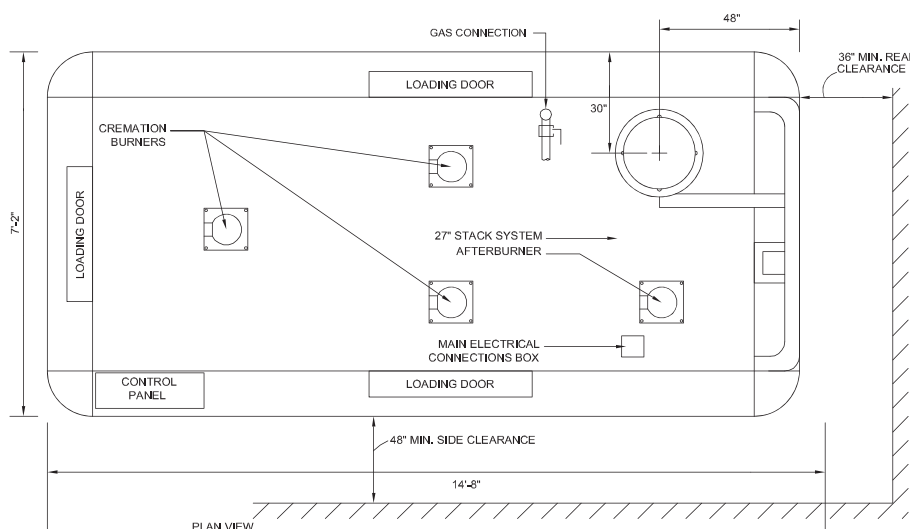


#### A-200P-3 Specifications

<b>Height</b>	8'4" (2.54m)
<b>Length</b>	14'8" (4.47m)
<b>Width</b>	7'2" (2.19m)
<b>Weight</b>	30,000 Lbs. (13,608 kg)
<b>Installation Clearance Required</b>	9' min (2.7m)
<b>Fuel</b>	Natural Gas, Propane, Butane, Can be Modified to Accept Diesel Oil
<b>Electrical</b>	220V/60Hz/1 Phase or 3 Phase (Nationally) 240V/50Hz/1 Phase or 3 Phase (Internationally) 60 AMP Minimum Requirement
<b>Maximum Fuel Rating</b>	2.5MM BTU/HR
<b>Panel</b>	Right, Left or Remote
<b>Warranty</b>	2 year "Best in Class"

Available in a wide range of colors allowing you or our team to design a comforting setting for your customers.

*Lease & Finance Options Available*





# Manufacturing with Pride

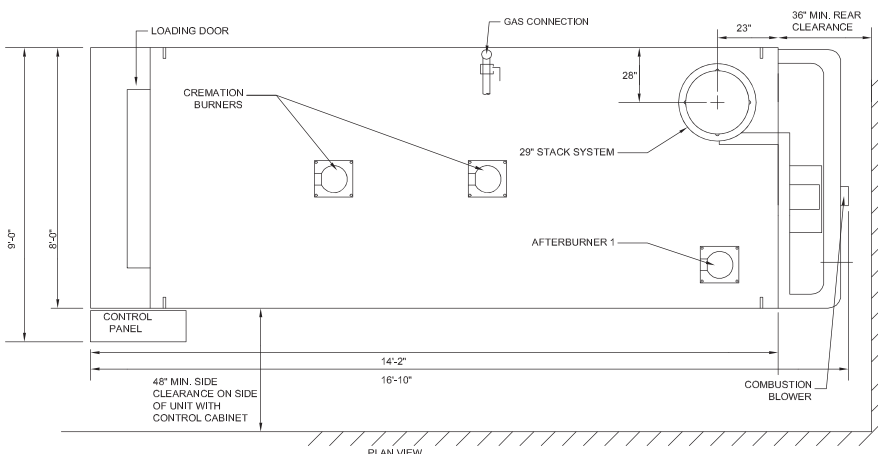
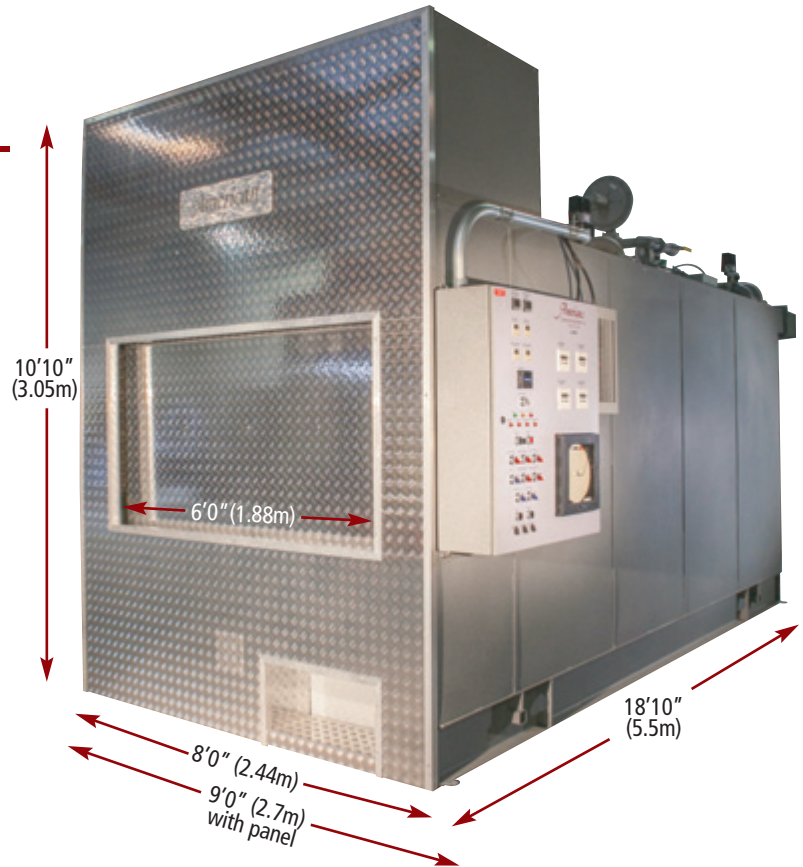
## Pet Cremation Equipment

### Model A-500P Equine/ Batch "Hot Hearth" Cremation Equipment

The A-500P is built for high volume and production of Segregated, Communal and Large Equine Animals. The A-500P has the largest hearth capacity and loading door opening in its class, making the insertion of large equine animals simple and dignified.

All of the features on the A-500P are designed to insure efficient and reliable operation. The A-500P comes standard with the Trilogy Combustion Control System insuring pinpoint diagnostics making troubleshooting immediate and accurate.

The multi-chamber design and fuel/oxygen control system provides maximum efficiency, complete combustion and rapid cremation times.



#### A-500P Equine/ Batch Specifications

<b>Height</b>	10'10" (3.05m)
<b>Length</b>	18'10" (5.5m)
<b>Width</b>	8'0" (2.44m); 9'0" with panel (2.7m)
<b>Door Width</b>	6'0" (1.88m)
<b>Weight</b>	64,000 Lbs. (29,030 kg)
<b>Installation Clearance Required</b>	9' min (2.7m)
<b>Fuel</b>	Natural Gas, Propane, Butane, Can be Modified to Accept Diesel Oil
<b>Electrical</b>	220V/60Hz/1 Phase or 3 Phase (Nationally) 240V/50Hz/1 Phase or 3 Phase (Internationally) 60 AMP Minimum Requirement
<b>Maximum Fuel Rating</b>	3.5 MM BTU/HR with 2 Primary Burners 5.0 MM BTU/HR with 4 Primary Burners
<b>Panel</b>	Right, Left or Remote
<b>Warranty</b>	2 year "Best in Class"

Available in a wide range of colors allowing you or our team to design a comforting setting for your customers.

*Lease & Finance Options Available*



## Pet Cremation Equipment

### Model A-250WH-P "Hot Hearth" Cremation Equipment

The A-250WH-P Pet Cremation System features a larger capacity loading chamber for communal and/or small batch loads. The A-250WH-P is equipped with a secondary cremation chamber burner to insure rapid cremation times and effective cremation of segregated animals.

All of the features on the A-250WH-P are designed to insure efficient and reliable operation. The A-250WH-P comes standard with the Trilogy Combustion Control System insuring pinpoint diagnostics making troubleshooting immediate and accurate.

The fuel/oxygen control system provides maximum efficiency and complete combustion of emissions. "Throat Air Control" & "Hearth Air Control" allows the operator the ability to effectively control the cremation process and decrease cremation times.

#### Minimize Downtime

With the American "Trilogy" Combustion Control System (shown here) you get the advantage of increased fuel efficiency, advanced monitoring and diagnostic capabilities. The "Trilogy" system allows for immediate and accurate troubleshooting, decreasing and/or eliminating costly down time. American Crematory Equipment Company is proud to offer a wide range of operating systems and technology to meet every customer's needs.

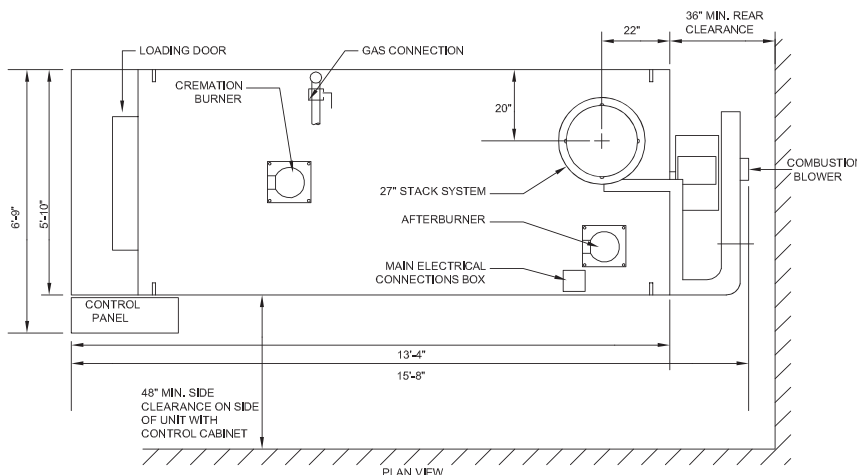


#### A-250WH-P Specifications

<b>Height</b>	8'4" (2.5m)
<b>Length</b>	15'8" (4.57m) with Blower
<b>Width</b>	5'10" (1.78m); 6'9" (2.06m) with Panel
<b>Door Width</b>	45" (1.14m)
<b>Weight</b>	28,000 Lbs. (12,700 kg)
<b>Installation Clearance Required</b>	8' min. (2.44m)
<b>Fuel</b>	Natural Gas, Propane, Butane, Can be Modified to Accept Diesel Oil
<b>Electrical</b>	220V/60Hz/1 Phase or 3 Phase (Nationally) 240V/50Hz/1 Phase or 3 Phase (Internationally)
<b>Maximum Fuel Rating</b>	2.50MM BTU/HR
<b>Panel</b>	Right, Left or Remote
<b>Warranty</b>	2 year "Best in Class"

Available in a wide range of colors allowing you or our team to design a comforting setting for your customers.

*Lease & Finance Options Available*





## Pet Cremation Equipment

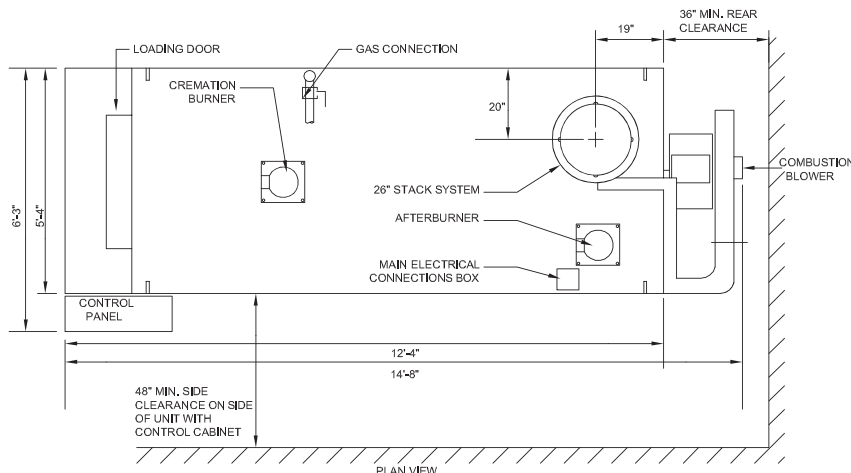
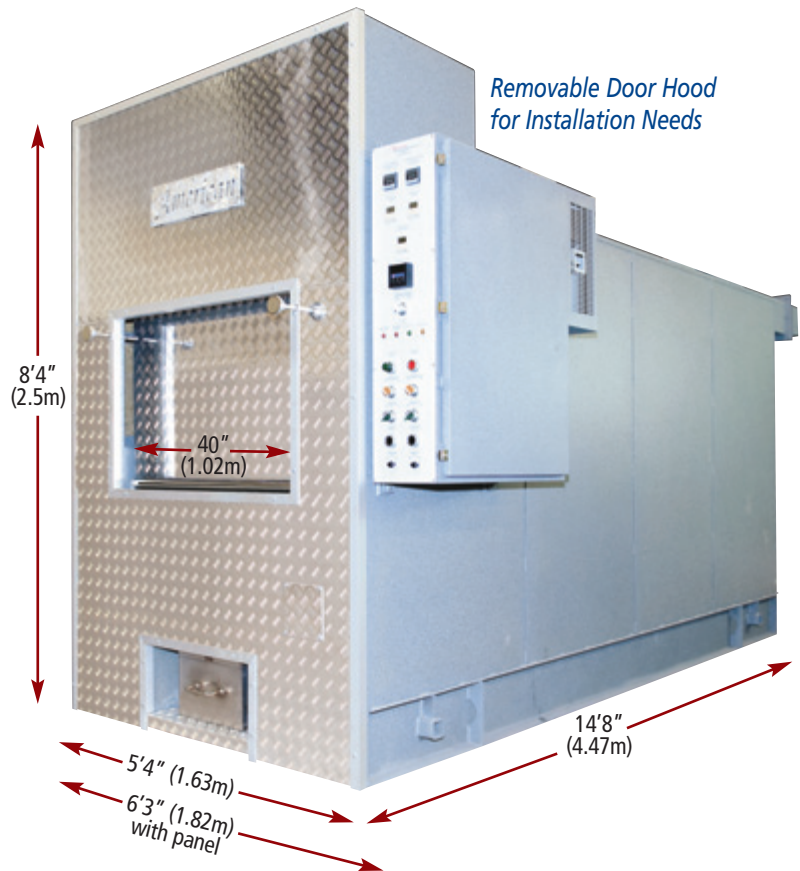
### Model A-200P-HT "Hot Hearth" Cremation Equipment

The A200P-HT is the premier cremator for animal aftercare, veterinarians, humane societies and pet cemeteries. This model pet cremator is ideal for entry level, expansion or upgrading to meet your specific needs. The A-200P-HT offers best in class efficiency and the flexibility to perform individual, communal or small to medium batch cremations. The primary feature on the A-200P-HT is "Throat Air" and "Hearth Air" Control. Throat Air allows the operator the ability to effectively control and eliminate stack emissions. Hearth Air allows the operator full control of the primary chamber over fire air which effectively decreases cremation times. Additionally the combustion process is cycled and monitored by automatic temperature and timer controls which ensure fuel efficiency.

#### A-150-P Also Available

The A-150-P Pet Cremation System is our entry level pet cremation system designed for individual cremations of small to medium animals. The A-150-P provides the best value, performance and efficiency in its class.

For A-150-P specifications and more details please call  
**(800) 396-2254.**



#### A-200P-HT Specifications

<b>Height</b>	8'4" (2.5m)
<b>Length</b>	14'8" with blower (4.47m)
<b>Width</b>	5'4" (1.63m); 6'3" with Panel (1.82m)
<b>Door Width</b>	40" (1.02m)
<b>Weight</b>	23,000 Lbs. (10,433 kg)
<b>Installation Clearance Required</b>	8' min. (2.44m)
<b>Fuel</b>	Natural Gas, Propane, Butane, Can be Modified to Accept Diesel Oil
<b>Electrical</b>	220V/60Hz/1 Phase or 3 Phase (Nationally) 240V/50Hz/1 Phase or 3 Phase (Internationally)
<b>Maximum Fuel Rating</b>	1.75MM BTU/HR
<b>Panel</b>	Right, Left or Remote
<b>Warranty</b>	2 year "Best in Class"

Available in a wide range of colors allowing you or our team to design a comforting setting for your customers.

*Lease & Finance Options Available*

## American Crematory Operating Systems

All of the American Combustion Systems (except the AE models) come standard with our "TRILOGY" operating platform. The TRILOGY system is a Siemens-based platform that includes Siemens flame safeguards, remote display and resets, motor starters, relays contacts, actuators and butterfly valves. This system is engineered to outperform the competition and provide our customers with piece-of-mind. Our engineering and product implementation is how we can give a 2 & 3-year component warranty. American Crematory has the best warranty in the industry.

Options for our operating and control systems are as follows.



### American Standard

This is our original operating system. It is an electromechanical or "EM" system. It includes the "Trilogy" combustion control system. The EM electromechanical (manual) control requires the operator to control the entire cremation process. The primary feature on the EM system is the "Throat Air" and "Hearth Air" Control. Throat Air Control allows the operator to effectively eliminate stack emissions. Hearth Air Control allows the operator to control the primary chamber excess air which decreases cremation times thus saving fuel cost. The combustion process is cycled and monitored by temperature and timer controls which ensure maximum efficiency throughout the cremation process.



### ACS-1 PLC & Touchscreen

This operating system is our Automated Control System or ACS. The system includes the "TRILOGY" system as well as an onboard CPU that controls every function of the cremation process automatically. The PLC is also a Siemens Platform. It incorporates a 15" touchscreen control panel with excellent graphic presentation. The operator inputs the information into our custom designed "Case Builder" and the unit will perform all the operations for the cremation process automatically. The ACS also has a "Manual Run" feature that allows the operator to override the process if necessary.



### American "Instant Access"

This operating system employs all the features of the ACS-1. Additionally, we install a Siemens Router and supply the customer with a tablet that has our Smart Client Platform. This system can be remotely monitored and controlled by the operator. The Instant Access allows our staff to continuously monitor the system from our office, laptop or smart devices. American Crematory can instantly access the client's units with a click of a button on our end. This allows our service team to diagnose and trouble shoot and solve any problem at anytime from anywhere in the world. Unlike our Competition we do not charge a monthly fee for this service.



### ARIES Operating System

The ARIES operating system employs all the features of the ACS-1 and the Instant Access systems. The Aries System has the latest technology when it comes to combustion control and communication. This system allows for greater throughput due to our "Hot Load" capability. The additional features include O2 (Oxygen) Monitoring and Control, Draft Control, Fuel Monitoring and Control, Fuel Cost Calculation and a High-Velocity Combustion Blower System. The Aries System also has built in pressure transmitters and a proprietary smart logic system that allows for remote tuning of the combustion system.



### Guardian D.A.S. (Data Acquisition System)

The Guardian D.A.S. employs all of the of the ACS-1, Instant Access and ARIES as well as the following features: PC interface, Dash Board View of all production data, Production Reporting of daily, monthly and yearly data, Maintenance Data Reporting and History, Maintenance Notifications, Data Storage, and Web Cam Stack Emissions Monitoring.

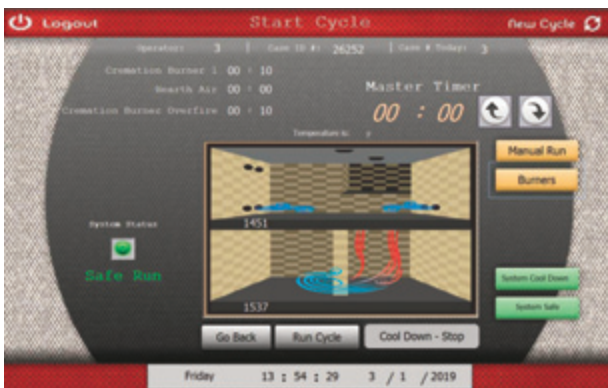
**Note: All Systems do not have any monthly fee unlike our competition**



# Manufacturing with Pride



## PLC Touch Screen Controls



## Guardian D.A.S. System Data Acquisition System

### **"State-of-the-Art Mechanics at Your Fingertips -Cutting Edge Technology with a Personal Touch"**

#### **Guardian D.A.S. Features:**

- PC Interface: Remotely access your cremation system through virtual network computing anywhere internet is available.
- Communication Link Directly to American Crematory Equipment Co., allows "ACE" to access your cremation system to provide immediate troubleshooting and diagnostic support.
- Operator Assistance: Our direct link allows "ACE" the ability to control, monitor and assist your staff with the cremation process of a difficult or specialty case.
- Touch Screen control & operation.
- O2 Monitor and Control, allows "ACE" to make adjustments via the internet to your cremation system to insure peak performance and efficient operation.
- Dash Board View of all necessary production data.
- Production Reporting: Immediate access to daily, monthly and YTD reports in PDF format.
- Maintenance Reporting: Provides detailed Service and Repair History for your cremation system in PDF format. (Provides the customer the ability to track and monitor the cremation system for budgetary purposes).
- Maintenance Notifications: Provides operator with illuminated messages to remind him/her when specific service issues need to be addressed.
- Data Storage: Stores all of your cremation system's data in the "cloud".
- Web Cam: Optional web cam allows you to monitor the cremation room and stack emissions during operation.

## No Monthly Fee Required!



"Like" Us on Facebook to be the first to know about new equipment, products and technical updates:

[www.facebook.com/americancrematory](http://www.facebook.com/americancrematory)



**AMERICAN**  
Controls & Equipment



## ENGINEERED WITH INTEGRITY

Our Panel Division "American Controls & Equipment Co., Inc." supplies a wide variety of custom control panel solutions to meet the demands of our customers and various other industries. We are built on providing high quality workmanship, on-time delivery and competitive pricing.

### OUR SERVICES INCLUDE:

- ★ Complete control solutions
- ★ Custom-built panels based on customer supplied documentation
- ★ Single-panel or complete system designs
- ★ Turnkey services by handling procurement of all materials
- ★ Consignment projects where the customer supplies some of or all the required parts

We're here to help you meet your needs in any way possible to deliver an outstanding product. We stand behind our work!



Custom-built panels tailored to each customer's specific needs



All panels are full functioning and tested prior to shipment

We subject our products to rigid inspection procedures offering North American/Canadian UL508A approval. Whether your requirement is for the assembly and wiring of a control panel or designing a complete system, American Controls & Equipment Co., Inc. can provide a cost effective, efficient solution that is both accurate and delivered on time.

**Customer service is our number one priority!**  
**Call us to discuss your next project.**





# Manufacturing with Pride

## Operator Training & Certification Programs Associated with ACC & CANA



Cremation  
Association  
of North America



### Top 11 Reasons Why You Need To Get Cremation Certified!

1. Get tools, including forms to enforce proper cremation procedures
2. Troubleshoot problems with cremators
3. Extend the life of your cremator
4. Learn how to properly inspect third-party crematories
5. Calculate the return on investment of buying a cremator
6. Navigate familial disputes while protecting your business
7. Avoid pitfalls that lead to lawsuits
8. Document everything you need in case you end up in court
9. Minimize problems when you make a mistake
10. Provide families with added peace of mind by becoming certified
11. Optional on-site training available. Call for quote & schedule.



### Crematory Certification Training Class Itinerary

- The afternoon will consist of hands on instruction of the cremation unit, teaching everyone how to properly operate the unit safely, review safe guards, trouble shoot the equipment and provide a detailed explanation of the controls of the cremation unit.
- We will also do a cremation with you as long as a case is available, and if not, we will simulate the cremation process.
- Once everyone has successfully completed the Crematory Certification Training Class, Certificates will be mailed to your firm for every individual who attended the program.



## Service

### Our 24/7 Service Commitment

American Crematory Equipment Co. is pleased to be available **24 hours a day, 7 days a week** for troubleshooting, service, and repair of all makes and models of crematory equipment. It is our goal that your facility be up and running as soon as possible when we are called to help. We are proud to offer a **24/7 phone hotline** to help you troubleshoot for the quickest resolution to your problem. If necessary, we will arrange for prompt service at your location.

In addition, we offer a complete **Tune up/Calibration/ Refractory Inspection** or PMI (Preventative Maintenance Inspection) which includes a 5 page written report on the condition of your equipment to help you stay in compliance with your local air quality regulations. Call us to help maximize fuel efficiency, minimize emissions, and reduce your cremation time.

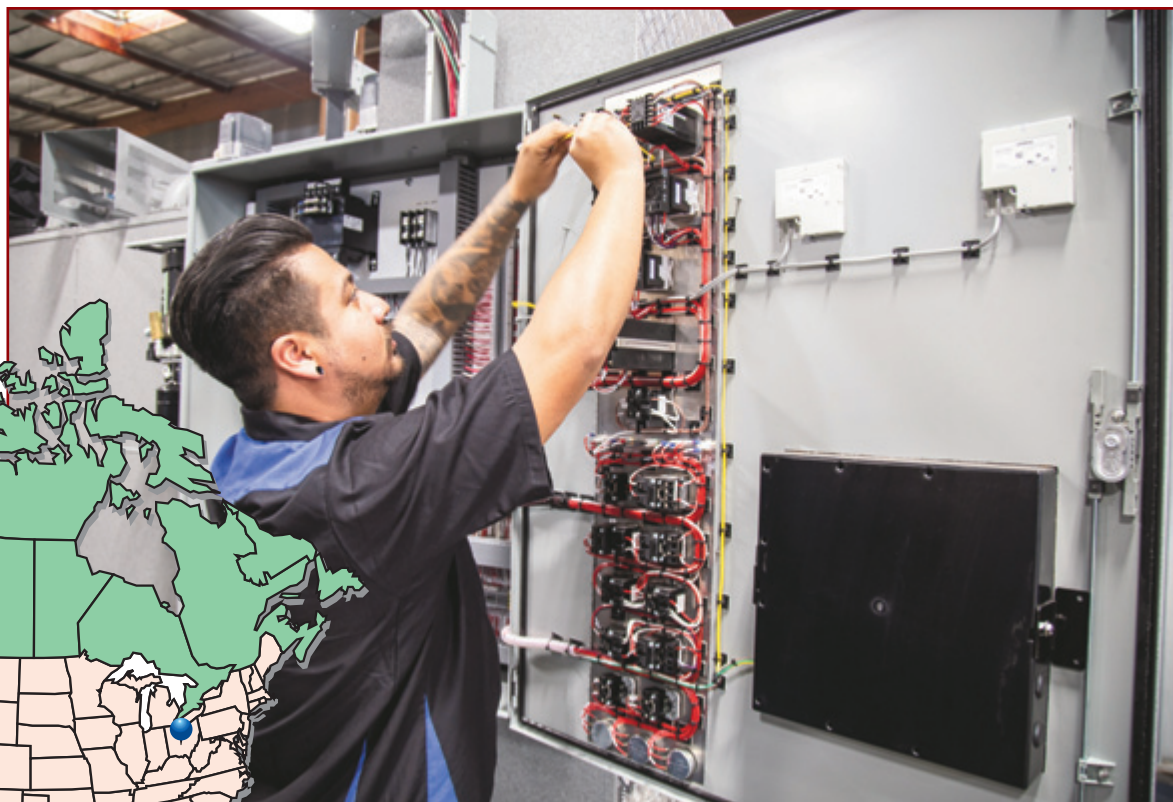
### Equipment Upgrades Offered:

- Stack Replacement
- Hot Hearth Conversions
- PLC Upgrades
- Operating System Upgrades
- Combustion Control Upgrades
- Draft System Conversions

*American Crematory Equipment Co. carries a \$2,000,000 liability insurance coverage program associated with our employees & workmanship.*



**Bilingual  
Technical  
Support for  
Service &  
Repair**



**Proudly Serving the  
United States of America and Beyond**



# Manufacturing with Pride

## Repairs

### Refractory Repairs

Our field technicians are factory trained on **all makes and models** of crematory equipment. American Crematory will provide **all labor, materials, and equipment** to complete your repairs. We will not ask you, the customer, to provide any labor or tools for the job.

Our Proprietary Refractory Products are engineered with the customer's volume and demand in mind. Our **"Good, Better, Best"** product line gives our customers the ability to choose the product that fits their needs.

We guarantee all of our products and workmanship for one year and your complete satisfaction.

**Financing on select refractory repair jobs available!**

**Ask us about:  
Our New Interlocking  
Brick Upgrade Option**



**American Crematory is proud to Introduce our  
NEW Interlocking Super Duty Fire Brick.**

American Crematory's proprietary interlocking fire brick has been designed and tested for structural strength and durability. The interlocking feature helps keep all perimeter and support walls from moving, shifting or leaning due to expansion and contraction, most commonly referred to as thermal shock. The 3200 degree fire brick rating along with our proprietary "Brick Lock" Mortar will add longevity to the refractory lining of your equipment.



## AC-1 Cremator Charger

American Crematory's cremator charger is designed with health and safety in mind to allow for safe, single-person, unassisted operation, while minimizing the risk of physical and repetitive strain injuries. One-of-a-kind docking station provides unique compatibility with your crematorium ensuring optimum, efficient, and safe charging, while reducing operating costs to save you money. The auto charging system's rapid charge speed also offers improved dignity for the deceased over manual charging.

**AMA0018** AC-1 Auto Charger

### Features include:

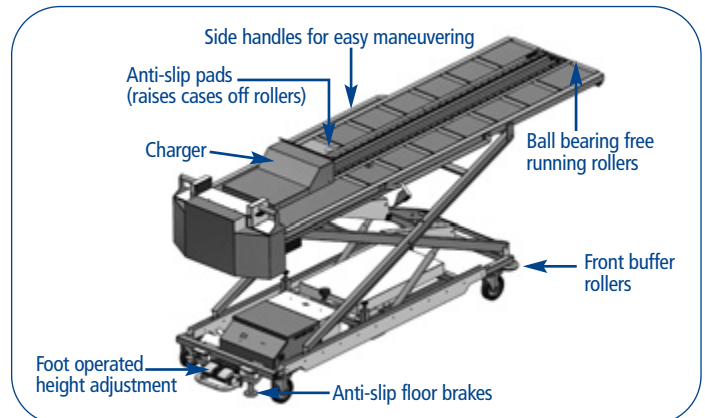
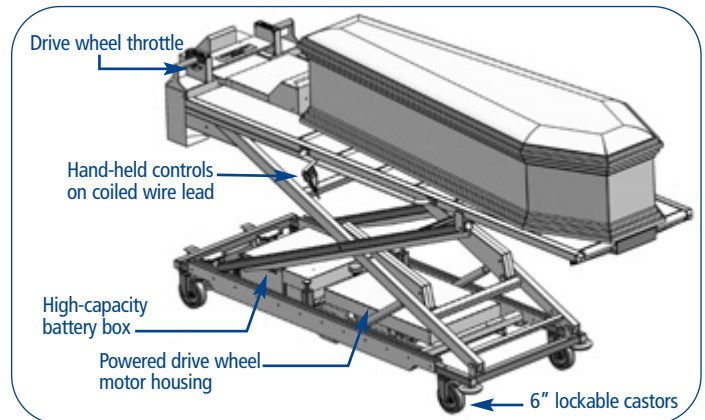
- ▶ **Heavy-Duty Charge** - adjustable charge on cases up to 1000 lbs (412kg), including traditional wooden caskets and cardboard varieties
- ▶ **Rapid Charge Speed** - adjustable down to 3.5 sec ensuring the cremator door is open for minimum time
- ▶ **Easy-to-use Foot Pedal Locking Brake System** - the charger can be locked to the floor for safe, stable charging
- ▶ **Single Operator Use** - whereas manual charging can require two technicians, automatic charging requires only one, freeing up staff for other duties
- ▶ **One Charger Suits All** - wide lifting range to enable loading and unloading of cremators, coolers, body storage/racking systems, and hearses
- ▶ **Powered Drive System** - patented retractable 5th wheel powered drive system with proportional throttle control
- ▶ **Secure Locking System** - by the press of a button, the case can be securely locked & unlocked for transportation
- ▶ **Digital Weighing Option** - integral weighing device to confirm charging weight to assist with accurate casket location in the cremator, while ensuring the safety of operators and compatibility to cremator ovens
- ▶ **Single & Double Ended Cremators** - controlled positioning compatibility of the casket beyond the hopper/cleanout for use with single or double ended cremators
- ▶ **Dual Handset Controls** - allows simultaneous use of cremator and charger controls from both sides of the charger
- ▶ **Increased Control** - superior positioning of the casket into the cremator, which minimizes process times, reducing energy costs

**New!**



### Dimensions

<b>Height</b>	Max 6'8" (2.03m)
	Min 1'9.5" (.546m)
<b>Length</b>	Base Unit 7'4" (2.24m)
	Overhang 2'6" (.762m)
<b>Width</b>	2'10" (.863m)





# Manufacturing with Pride

## Hydraulic Lift Tables



### Hydraulic Lift Table

The American table is designed for use in loading crematories, funeral coaches, vans or coolers. It offers ease of use, maneuverability and durability. There are no pedals or pumps to operate. A narrow frame and large casters permit its use in tight spaces. The platform has five rollers and a locking mechanism to keep the load stationary.

The heavy duty 12 volt battery will operate the lift table continuously for many hours without charging.

- AMA0008** Battery Powered Hydraulic Lift
- AMA0009** Battery Powered Hydraulic Lift - with Scale

#### Specifications

Length	73 inches
Width	30 inches
Max Height	74.5 Inches
Height when lowered	22 inches
Weight Capacity	400-500 lbs.

#### Upgrade Option:

Built-in weight monitoring system

### Heavy Duty Hydraulic Lift Table

The LT2-HD is designed to provide you with the ability to lift, load and store heavy caskets and cases with ease. The LT2-HD is constructed with hardened cold rolled steel for strength and durability. The automatic push button remote can be removed or holstered for operation. The LT2-HD is designed to lift and load up to 1200 lbs. The LT2-HD also has the option of an onboard scale system so you know exactly what the load weight is.

- AMA0010** Heavy Duty Battery Powered Hydraulic Lift
- AMA0011** Heavy Duty Battery Powered Hydraulic Lift - with Scale

#### Specifications

Length	73 inches
Width	30 inches
Max Height	44 inches
Height when lowered	20 inches
Weight Capacity	1000-1200 lbs.

#### Upgrade Option:

Built-in weight monitoring system



Powder Coated



## Electric Cremated Remains Processors

### **New!** A-1 Deluxe Processing Station

The American A-1 Deluxe Processing Station is engineered to reduce bone fragments to fit into standard size urns, while providing ease of operation with a convenient work space, built-in fan system, built-in lighting system, and exterior venting.

Includes:

- ▶ Personalized Light Bar to Display Your Facility Name
- ▶ Customized Light Bulb Color Option
- ▶ Your Choice of Processing Station Powder Coating Color

T375-BK07	T375-BK10	T375-BK26	T075-WH34	T064-BR24	T064-GR660
T064-GR05	T064-BL95	T064-GN81	C013-GR08	T013-BG38	T012-WH260
T013-WH09	T025-BR01	T028-GR02	T353-YL02	T357-GR105	T353-GR06
T358-GR539	T391-BG290	T091-GR309	C291-GN20	T091-GN57	T091-BR47

**AMA0005** A-1 Deluxe Processing Station - Powder Coated

**AMA0006** A-1 Deluxe Processing Station - Stainless Steel

### **New!** A-3000 Processing Station

- plugs into a standard 110 volt outlet
- 16" x 16" x 38" including drum

Includes:

- ▶ LED Lighted Processing Area
- ▶ Ventless and dustless filter system with optional ducting to outside air or collection (bag house)
- ▶ 39" Process and Magnetizing Tray
- ▶ Twist & lock processing drum
- ▶ Direct drive process (no belts to change or tighten)
- ▶ Swivel casters for mobility
- ▶ Built in storage cabinet for supplies
- ▶ Laser etched logo or optional lighted logo

**AMA0007** A-3000 Cremains Processing Station



## Electric Cremated Remains Processors

### Electric Cremated Remains Processors

Cremated Remains Processors are engineered to reduce bone fragments to fit into a standard size urn. Each drive unit is equipped with a 1.5 horsepower industrial rated motor with direct drive to the drum shaft and an on/off switch with overload protection. Two hardened swivel cutting blades pulverize bone fragments in an average time of 30 seconds or less.

### A-2000 Processor

- mounted on casters for easy movement
- plugs into a standard 110 volt outlet
- 16" x 16" x 38" including drum

#### Available in:

**AMA0003** Gray Zolotone

### A-2000-S Ventless Processing Station

- features a built-in fan with replaceable filter
- no exterior venting necessary
- 30" x 30" x 61"
- heavy duty stainless steel construction
- requires a 110 volt dual plug outlet with a 30 amp breaker

**AMA0004** Ventless Processing Station

## Replacement Parts and Service Available for All Makes & Models

### CAUTION!

We recommend that the operator wear protective safety items at all times, when processing remains.



## Storage & Cooling Racks



3 Tier Rack System  
with Laminate Boards

4 Tier Rack System

### Storage Racks

American Crematory's custom designed storage racks allow you to store numerous standard and cardboard caskets in a minimal space. Each shelf has rollers every 12 inches for easy loading and unloading from your lift table. Built to last, sections are either bolted or welded together for easy assembly (shippable units are bolted not welded). All portable racks are available in either side load or front load, and come with heavy duty casters. Laminate boards can also be provided upon request. Call for pricing.

**ACC0012** 3 Body Rack | **ACC0013** 3 Body Rack - Stainless Steel  
**ACC0014** 4 Body Rack | **ACC0015** 4 Body Rack - Stainless Steel

### Cremation Pan Cooling Rack

Cooling racks for your cremation pans. Available in 2 or 4 pan configurations. Custom racks for your specific needs. Please call for more information.

**PTU0006** Cremation Pan Cooling Rack - 2 Shelves  
**PTU0007** Cremation Pan Cooling Rack - 4 Shelves



# Manufacturing with Pride

## Coolers & Custom Rack Systems

### Coolers & Custom Rack Systems

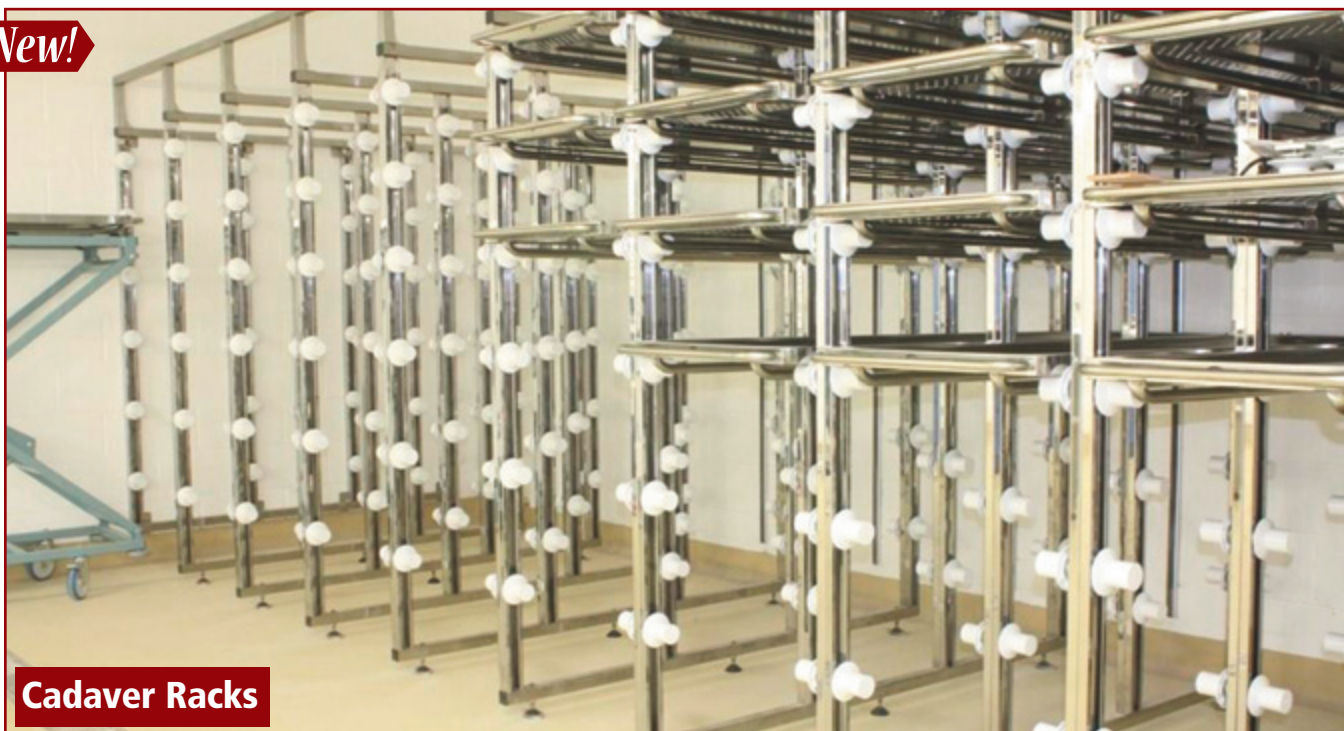
Our coolers are custom designed to fit your facility's space requirements. Please call us to find out how we can help you maximize your capacity with a custom cooler and custom rack system.

**EQP3BCE** 3 Body Cooler - Economy

**ACC0087** Optional Mounted Casters for 3 Body Cooler



**New!**



**Cadaver Racks**

## Refractory Lined and Stainless Steel Stack Options

### **Refractory Lined Stacks**

American Crematory Equipment Co. provides 4-1/2" of 2500°F "no joint", cast liner for our premier refractory lined stacks to safeguard your facility. We make stacks for all makes and models to meet your specific requirements.

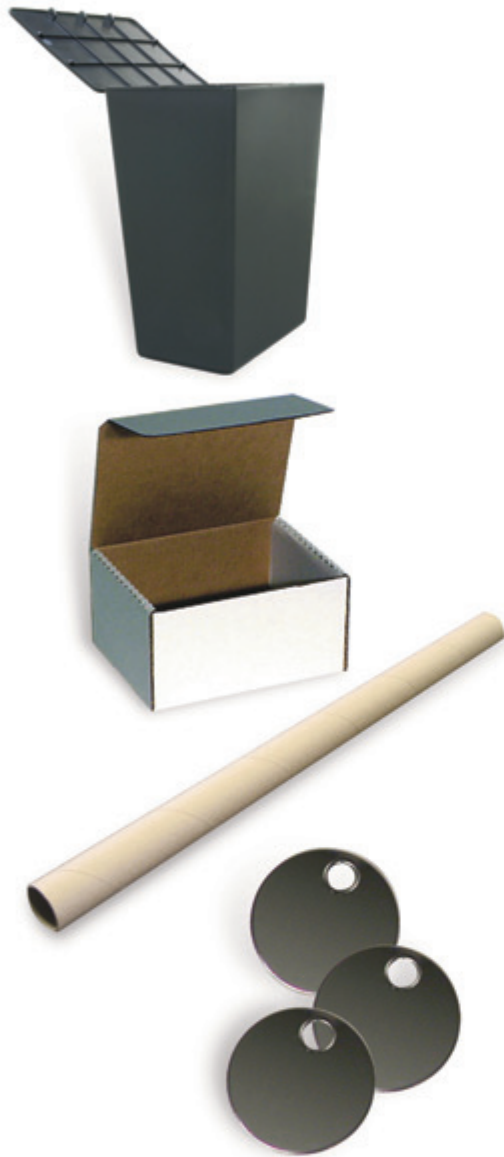
### **Specifications**

14 gauge steel or stainless steel  
4-1/2 inches of 2500°F cast liner  
3 & 5 ft. flagged sections  
Painted to custom specifications  
Made to order per stack diameter  
Custom made offsets

### **Stainless Steel Stack with Opacity System**







## Containers, Discs, & Rollers

### Temporary Plastic Urn

The American Crematory temporary plastic urn is a container suitable for the temporary storage of cremated remains, and is sold in cases of 36.

**ACC0049** Black Temporary Plastic Urn

### Cardboard Mailers

Cardboard mailers for the temporary cremated remains containers are also available. Cardboard mailers are die-cut for easy assembly and come in bundles of 50.

**ACC0045** Cardboard Mailers for Temporary Urns

### Cardboard Cremation Rollers

Cardboard cremation rollers allow easy loading of a container into the cremation chamber and help reduce wear on the crematory floor.

**ACC0043** Standard Size 1-7/8" dia. x 20" 100 rollers/case

**ACC0044** Heavy Duty 2-1/2" dia. x 18" 75 rollers/case

### Stainless Steel Identification Discs

Identification discs are stainless steel and pre-numbered. Preprinted name and address available upon request. Standard size 1-1/4" diameter; also available in 1-1/2" diameter. Minimum of 250 discs per order.

**ACC0046** Stainless Steel Identification Discs

### Digital Scale with Ramp

Simple and safe way to weigh each case prior to cremation. Please call for more details. (Lift table not included).

**AMA0016** Digital Scale with Ramp



## Cremation Tools

### Repositioning/Clean-out Tool

The American repositioning tool is custom designed for easy positioning and clean-out of remains. This tool has a convenient 45° angle for easy usage. Although highly durable, it also helps prevent damage to your hearth because of its light weight construction.

**ACC0069** Set Screw | **ACC0070** Threaded  
**ACC0071** 10 ft. Pole

### Clean-out Block Brush

A heavy duty steel clean-out brush designed to prevent damage to your hearth. This custom brush has a 45° angle allowing for easy removal of cremated remains. Replacement of worn bristles is made by removing four screws and placing a new block brush in.

**ACC0003** Clean-out Block Brush | **ACC0005** Wire Replacement Brush

### Clean-out Strip Brush

The American heavy duty brushes allow you to sweep your cremation chamber with less abrasion to the surfaces of the chamber, increasing the life of your refractory. Available with either a 1/2 inch threaded or 3/4 inch set screw coupling, the brush head connects to 3/4 inch EMT available at your local hardware store. Available in 12 inch or 6 inch width (poles not included).

**ACC0036** 6" Brush 3/4" Set Screw | **ACC0037** 6" Brush 1/2" Threaded  
**ACC0038** 12" Brush 3/4" Set Screw | **ACC0039** 12" Brush 1/2" Threaded  
**ACC0040** 12" Brush with Pole

### Double Strip Brush

Available with the same connections and same widths as our regular strip brush, just twice as many bristles.

**ACC0014** Double Strip Brush

### Hand Magnet

A powerful magnet to draw ferrous materials out of the remains prior to processing. Quick release handle to clear material from magnet.

**ACC0035** Hand Magnet

### Urn Loader

Use this adjustable loading funnel to easily transfer cremated remains into an urn for final disposition. Loading height is adjustable and features a sliding stopper on the funnel neck.

**PTU0008** Powder Coated Standard Steel  
**PTU0009** Stainless Steel



## Ash & Transfer Pans

### Infant Cremation Pan

The American infant cremation pan is made of 12 gauge stainless steel and equipped with handles on each side for easy positioning. The pan's compact size allows it to fit in every type of cremation chamber.

**PTU0004** Infant Pan (Stainless Steel)



### Custom Ash Pans

Ash pans are custom made to fit any crematory with a durable stainless steel or black iron construction.

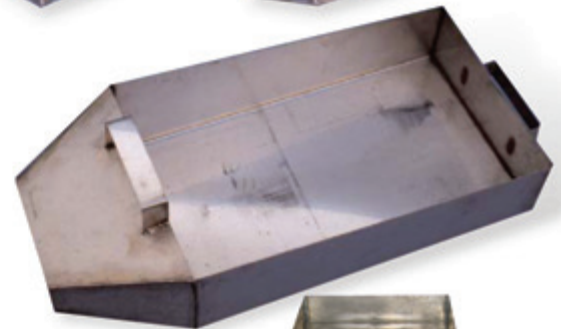
We can fit any make or model of cremator.  
Please specify model of cremator.



### Transfer Pan

The American transfer pan was designed to place the cremains from the ash pan to the transfer pan for cooling, then to the processor. The unique, light weight, stainless steel pan is easy to handle and is a favorite tool used by our customers.

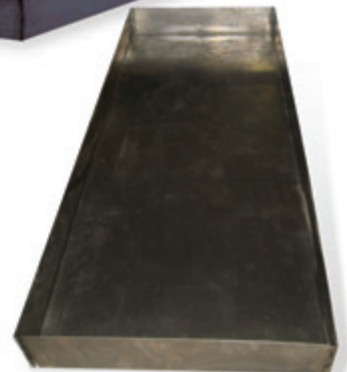
**PTU0005** Transfer Pan (Stainless Steel)



### Body Pan

The body pan is constructed of light gauge steel and is designed to easily control difficult cremations. It contains and controls all remains and fluids, preventing damage to refractory.

**ACC0043** Body Pan



### American High Temperature Vacuum System

The American High Temperature Vacuum System is ideal for picking up cremation residue.

- portable with casters for easy movement
- powerful 2 HP motor
- 60" aluminum extension with clean-out tools
- heavy duty hose and 30 foot cord

**VAC0001** American High Temperature Vacuum System



## Spare Parts

### Processor Pot Bearings

---

PBB0015	Pot Bearings for American Crematory Processor
PBB0016	Pot Bearings for B&L Processor
PBB0017	Pot Bearings for IEE/Matthews Processor

### Processor Pot Blades

- Stainless Steel, laser cut, tig welded
- Pet Cremation Suggested Use: Straight Blades
- Human Cremation Suggested Use: Swivel Blades

MPS0127	Pot Blades for American Crematory Processor*
MPS0129	Pot Blades for B&L Processor
MPS0131	Pot Blades for IEE/Matthews Processor*
*Heavy duty blades also available for American Crematory & IEE/Matthews Processors	

### Complete Thermocouple Sets

---

TCP0007	12" Thermocouple Set
TCP0008	18" Thermocouple Set
TCP0009	24" Thermocouple Set

### Honeywell & Partlow Chart Recorder Paper

---

ACC0059	Honeywell 7 Day Chart Recorder Paper
ACC0060	Honeywell 24 Hour Chart Recorder Paper
ACC0061	Partlow 7 Day Chart Recorder Paper
ACC0062	Partlow 24 Hour Chart Recorder Paper

### Replacement Chart Recorder Pens

---

ACC0054	Honeywell Chart Recorder Pen, Red
ACC0055	Honeywell Chart Recorder Pen, Blue
ACC0056	Honeywell Chart Recorder Pen, Purple
ACC0057	Partlow Chart Recorder Pen, Red
ACC0058	Partlow Chart Recorder Pen, Green

### Hand Held Metal Detector

---

ACC0029	Hand Held Metal Detector
---------	--------------------------





## Spare Parts

### Replacement Filter

- ACC0041** Replacement Filter for Ventless Processing Station,  
16" x 16" x 1"
- ACC0042** Replacement Filter for B&L

### ACF Relay

- CMP0002** ACF Relay

### Flame Pak

- CMP0003** Flame Pak

### Timofier U300

- CMP0004** Timofier U300

### Airflow Switch

- CMP0005** Grey Spring Airflow Switch
- CMP0006** Blue Spring Airflow Switch
- CMP0034** Atunes Airflow Switch

### Ignitors and Flame Rods

Ignitors and Flame Rods available for all crematory makes and models



**Replacement parts available for all makes and models of cremators.**  
Please call for more information.

## Safety Equipment

### Standard Face Shield

Standard face shields feature a high-impact polycarbonate lens, 8" x 15-1/2", 0.06" thickness, pre-injected curved lens, with a locking adjustable headpiece. Not for Welding. Meets ANSI Z87.1+ Standard. Replacement shields available.

**ACC0025** Clear Face Shield

**ACC0027** Green Face Shield

**ACC0026** Clear Replacement Shield

**ACC0028** Green Replacement Shield

### Heat Reflective Face Shield

Lightweight clear or tinted polycarbonate face shields featuring a thin layer of gold to reflect up to 99% of infrared (IR) and Ultraviolet (UV) radiation. The gold layer is protected by a scratch resistant coating. Shield is attached to an adjustable headgear.

**ACC0024** Heat Reflective Face Shield

### Standard Goggles

Standard goggles offer economical eye protection with an impact resistant polycarbonate lens, flexible PVC construction, and an elastic headstrap. 99.9% UV Protection. Meets Current ANSI Z87.1 Standard

**ACC0016** Goggle

### Sidewinder Protective Eyewear

High-impact polycarbonate lenses with adjustable, non-slip temples to fit a variety of face sizes. Ratchet inclination. Scratch-resistant lenses with anti-fog coating. 99.9% UV Protection. Ribbed non-slip nose cushion. Meets current ANSI Z87.1+ Standard and CSA Z94.3 Standard.

**ACC0017** Clear

### Earmuff Hearing Protection

Lightweight muff-style hearing protector with universal adjustment for under-the-chin, over-the-head or behind-head wear.

**ACC0018** Earmuff Hearing Protection

### Corded Foam Ear Plugs

Self-adjusting, pre-shaped foam ear plug expands to fit virtually every wearer.

**ACC0019** Ear Plugs, 100 Pair Per Box





## Safety Equipment

### Low Maintenance Multi-Use Halfmask Respirator

Halfmask respirator is made of durable silicone with a universal nose fit, a large sealing surface for excellent fit, and an advanced yoke design for a secure, comfortable no-slip fit. 1 Year Limited Warranty Halfmask Respirators. NIOSH Approved. **Organic Vapor Cartridge/N95 Particulate**

**ACC0020** Small

**ACC0021** Medium

**ACC0022** Large



### N95 Particulate Respirator

Includes inner foam for a custom seal and a dual head strap for optimum fit. Maintenance-free. NIOSH approved.

**ACC0023** N95 Particulate Respirator, Box of 20



### Shoe Covers

Machine washable, slip-resistant PVC shoe covers slip on easily to keep shoes clean.

**ACC0070** Medium/Large



### Reflectorized Aluminum Apron

The American apron provides the highest quality materials and offers superior insulation against radiant heat. 16 oz. aluminized flame retardant rayon reflects up to 90% of all radiant heat up to 1000° F.

**ACC0011** Aluminum Apron, One Size Fits All



### Reflectorized Aluminum Jacket

The outside of this jacket is aluminized to reflect radiant heat. It has no pockets to trap hot particles and is oversized to fit over work clothes. The jacket has snaps at the wrist, a flap front with covered snaps, and a stand-up collar that's lined with green flame-resistant cotton.

**ACC0012** Medium

**ACC0014** X-Large

**ACC0013** Large

**ACC0015** XXL



## Safety Equipment

### Aluminized Safety Gloves

These aluminized backed gloves feature a cowhide palm, wool sock lining, keystone thumb and reinforced index finger. Provides radiant heat protection without sacrificing flexibility. A necessity for every operator.

**ACC0001** Aluminized Safety Gloves, 18"



### Leather Safety Gloves

100% brown leather gloves provide flexibility and protection.

**ACC0002** Leather Safety Gloves, 14"



### Cotton/Poly Knit - Latex Coated Palm Gloves

Heavy weight dip and shell. Green latex crinkle finish palm coat. Knit back helps keep hand cooler longer. Abrasion Resistant.

**ACC0061** Medium/Large/Extra Large



### Split Leather Palm Gloves

Standard side-split leather with full leather index finger. Cotton back with leather knuckle strap and elastic. 2-1/2" rubberized safety cuff, gunn cut.

**ACC0023** One Size Fits All



### Dextera PF+EX Powder-Free Latex Examination Gloves

5 mil powder-free exam grade latex gloves. Excellent sensitivity, beaded cuff, consistent quality, economical latex protection, ambidextrous.

Box qty: 100 gloves by weight

**ACC0062** Small/Medium/Large/Extra Large





## Safety Equipment

### Raven Powder-Free Nitrile Gloves

6 mil powder-free nitrile gloves offering superior puncture and abrasion resistance. Latex-free, textured grip, beaded cuffs, ambidextrous.

US Patent No. Re. 35.616. Box qty: 100 gloves by weight.

<b>ACC0003</b> Small	<b>ACC0006</b> X-Large
<b>ACC0004</b> Medium	<b>ACC0007</b> XXL
<b>ACC0005</b> Large	



### Personal Eyewash Station

Dual-bottle eyewash station for temporary first-aid until victim can reach a larger unit. Includes two 16 oz. bottles with twist-off tops. Durable plastic station available. Directions printed on station for fast reference.

**ACC0030** Eyewash Station, Dual Bottle | **ACC0031** Eyewash/Irrigate Bottle



### Portable Eyewash Station

Lack of an emergency eyewash station is one of the top OSHA citations. Protect employees as required by law and guard against personal injury claims. Station comes with water preservative. Change water every 90 days. Compliance - ANSI Z358.1. One-hand operation, gravity fed, 15-minute flow time. Holds up to 14 gallons of potable water, no plumbing required. Portable unit measures 11-1/2" x 19-1/2" x 25" and includes mounting bracket, inspection tag, and preservative.

**ACC0032** Eyewash Station



### Personal First Aid Kit

Compact, lightweight kit contains an assortment of practical, single-use disposable items to treat injuries in a sanitary and simple way. Fits easily into backpack, toolbox, athletic bag and glove compartment. Ideal for travel, workshops, personal sports, and recreational needs. Meets ANSI Z308.1 Standard.

**ACC0034** Personal First Aid Kit



### Also Available

Leather Aprons • Leather Sleeves • Denim Aprons

## Index

<b>A</b>		<b>D</b>		<b>P</b>	
A-1 Deluxe Processing Station.....	24	Digital Scale with Ramp.....	29	Pans	
A-200.....	8			Ash Pans.....	31
A-200P-3.....	12	<b>E</b>		Body Pans.....	31
A-200P-HT.....	15	Ear and Eye Protection.....	34	Infant Cremation.....	31
A-250P-5.....	10	Eyewash Stations.....	37	Transfer Pans.....	31
A-250P-8.....	9	<b>F</b>		Personal First Aid Kit.....	37
A-250P-Quad.....	11	Face Shields.....	34	Portable Eyewash Stations.....	37
A-250.....	7	Filter.....	33	Processing Stations.....	24, 25
A-250WH-P.....	14	First Aid Kit.....	37	Processors.....	25
A-300.....	6	Flame Pak.....	33	Processor Pot Bearings.....	32
A-350.....	5	Flame Rods.....	33	Processor Pot Blades.....	32
A-375-S5.....	4				
A-400P-8.....	9	<b>G</b>		<b>R</b>	
A-500P-Equine/Batch.....	13	Guardian D.A.S. System.....	16, 17	Racks	
A-2000 Processors.....	25	Gloves		Storage.....	26
A-2000-S Processing Station.....	25	Aluminized Safety.....	36	Cooling.....	26
A-3000 Processing Station.....	24	Cotton/Poly Knit Latex.....	36	Custom.....	27
AC-1 Cremator Charger.....	22	Leather Safety.....	36	Refractory Lined Stacks.....	28
ACE Controls & Equipment.....	18	Powder-Free Latex.....	36	Repairs, Refractory.....	21
ACF Relay.....	33	Powder-Free Nitrile.....	37	Replacement Parts.....	32, 33
Airflow Switches.....	33	Split Leather Palm.....	36	Repositioning Tool.....	30
ACS-1 PLC & Touchscreen System.....	16	Goggles.....	34	Respirators	
American "Instant Access" System.....	16			Halfmask Respirator.....	34
American Standard System.....	16	<b>H</b>		N95 Particulate Respirator.....	34
Aries System.....	16	Hand Magnet.....	30		
Apron, Reflectorized Aluminum.....	35	Hearing Protection.....	34	<b>S</b>	
Ash Pans.....	31	Hydraulic Lift Tables.....	23	Safety Equipment.....	34 - 37
				Scale with Ramp.....	29
<b>B</b>				Service.....	20
Body Pans.....	31	<b>I</b>		Shoe Covers.....	34
Brushes		Identification Discs, Stainless Steel.....	29	Spare Parts.....	32, 33
Clean-out Block Brush.....	30	Ignitors.....	33	Stainless Steel Identification Discs.....	29
Clean-out Strip Brush.....	30	Infant Cremation Pan.....	31	Stainless Steel Stacks.....	28
Double Strip Brush.....	30			Storage Racks.....	26
		<b>J</b>			
<b>C</b>		Jacket, Reflectorized Aluminum.....	34	<b>T</b>	
Cadaver Racks.....	27			Temporary Plastic Urn.....	29
Cardboard Cremation Rollers.....	29	<b>M</b>		Thermocouple Sets.....	32
Cardboard Urn Mailers.....	29	Metal Detector.....	32	Timofier.....	33
Chart Recorder Paper and Pens.....	32	Multi-Chambered Pet Cremation Equip. . .	9	Transfer Pan.....	31
Clean-out Tool.....	30				
Coolers.....	27	<b>O</b>		<b>U</b>	
Cooling Racks.....	26	Operator Training & Certification.....	19	Urn Loader.....	30
Cremated Remains Processors.....	24, 25	Operating Systems.....	16	Urn, Temporary Plastic.....	29
Cremation Container.....	29				
Cremation Equipment				<b>V</b>	
Human.....	4 - 8			Vacuum System.....	31
Pet.....	9 - 15			Ventless Processing Station.....	25
Cremation Pan Cooling Racks.....	26				
Cremation Tools.....	30				
Custom Rack Systems.....	27				



# Manufacturing with Pride





*American*  
CREMATORY EQUIPMENT CO.  
**Manufacturing with Pride**



\$3.95



**[www.AmericanCrematory.com](http://www.AmericanCrematory.com)**

14530 Anson Avenue • Santa Fe Springs, CA 90670

Corporate Office: (562) 926-2876 • (800) 396-2254 • Fax: (562) 926-2880