

American CREMATORY EQUIPMENT CO.

Proudly Serving the Cremation Industry for over 38 Years!



Maximize Profits

With the addition of the "Trilogy" combustion control & monitoring system (shown here) you get the advantage of increased fuel efficiency, advanced monitoring and diagnostic capabilities. The "Trilogy" system allows for immediate and accurate troubleshooting, decreasing and/or eliminating costly down time. American Crematory Equipment Company is proud to be the only manufacture to employ this technology.



A-200-HT

"Hot Hearth" Cremation Equipment

The American A-200-HT Model is our Flagship Cremator. With an average cremation time of 2 hours or less the A-200-HT can easily perform 4-5 cases per day. The primary feature on the A-200-HT is "Throat Air" and "Hearth Air" Control. Throat Air allows the operator the ability to effectively control and eliminate stack emissions. Hearth Air allows the operator full control of the primary chamber over fire air which effectively decreases cremation times. Additionally the combustion process is cycled and monitored by automatic temperature and timer controls which ensure fuel efficiency.

A-200-HT Specifications

Height	8'4" (2.5m)
Length	14'8" (4.47m)
Width	6'3" with Panel (1.82m)
Weight	23,000 Lbs. (10,433 kg)
Installation Clearance Required	8' min. (2.43m)
Fuel	Natural Gas, Propane, Butane, Can be Modified to Accept Diesel Oil
Electrical	220V/60Hz/1 Phase or 3 Phase (Nationally) 240V/50Hz/1 Phase or 3 Phase (Internationally)
Maximum Fuel Rating	1.75MM BTU/HR
Panel	Right, Left or Remote
Warranty	2 year "Best in Class"

Options:

- "Trilogy" Combustion Control & Monitoring System
- "Guardian" PLC, DAS & Touch Screen Control System
- "Aries" Complete Logic Control
- Combustion Blower "Silencer"

Available in a wide range of colors allowing you or our team to design a comforting setting for your customers.

Ask About Our Lease & Finance Options

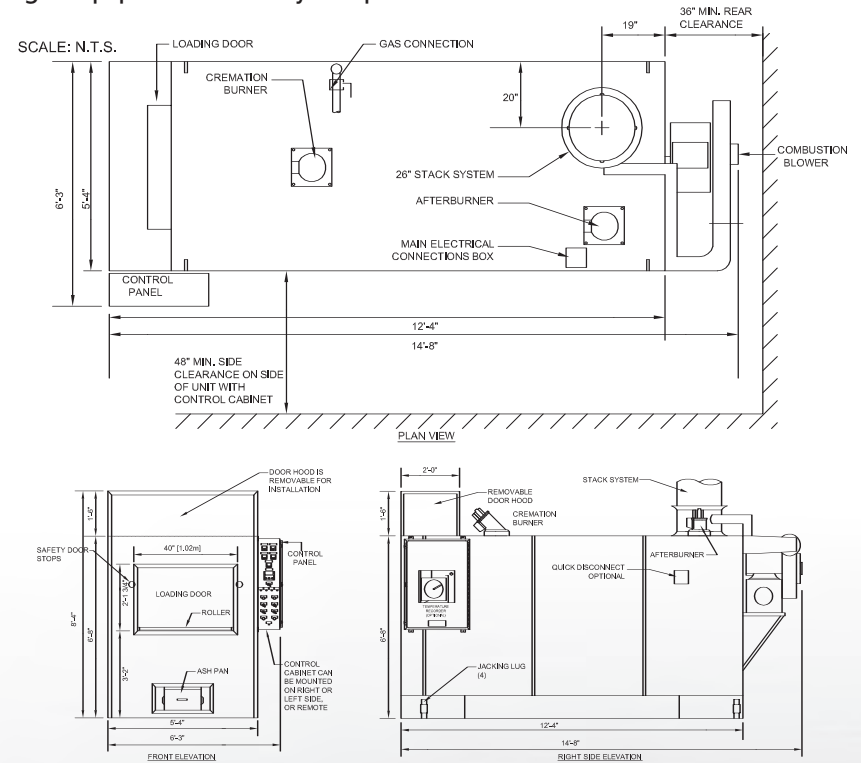
Sales • Service • Supplies • Repairs

www.AmericanCrematory.com

Corporate Office: (562) 926-2876 • (800) 396-2254 • Fax: (562) 926-2880

A-200-HT

"Hot Hearth" Cremation Equipment



Scope of Operations:

- American Made and Quality Built Human & Pet Crematories
- Refrigeration & Cooler Rack Systems To Meet Your Needs
- Cremation Certification & Training Programs
- Annual Tune-up & Calibration Specials
- Refractory Repair
- Design & Construction Consulting
- Service & Repair On Every Type Of Cremation Unit On The Market Today
- Reasonable & Competitive Pricing On All Our Products & Services
- Friendly, Knowledgeable, Experienced and Bilingual Technicians
- Parts, Supplies, and Ancillary Equipment
- Maintenance Programs
- 24/7/365 Customer Service
- 24 Hr. Emergency Hotline at **1.800.396.2254**

The American Advantage

Since 1974, American has been manufacturing, servicing, and repairing cremation equipment worldwide. We are the premiere manufacturer of *Hot Hearth Cremation Equipment in North America Today!* We are the only manufacturer to offer a full 2-year warranty on all new equipment. We carry a complete line of cremation equipment, including safety equipment, tools, supplies and parts to satisfy your cremation needs. Our factory trained technicians provide excellent diagnostics, service and repair on all makes and models of cremation equipment on the market today. They are available to address your service needs 24 hours a day 7 days a week.

Service is Everything™

We pride ourselves on staying at the forefront of technology to bring you the most innovative equipment available. If you are looking for cremation equipment, we will assist you thru all phases of the equipment purchasing process including: planning, zoning, permitting, building layout, construction consulting, installation, start-up and training.

Our philosophy is simple; Always put the customers first, have integrity and be reliable. No matter what your needs might be we are here for you because we understand that...*Service is Everything™*.

www.AmericanCrematory.com

Corporate Office: (562) 926-2876 • (800) 396-2254 • Fax: (562) 926-2880
 14530 Anson Avenue • Santa Fe Springs, CA 90670
 East Coast Office: (727) 230 - 8890