

American
CREMATORY EQUIPMENT CO.



Operating Manual
A-1 Deluxe
Cremated Remains Processor

A-1 Deluxe / A3000 Processing Station Warranty

We Hereby warrant and guarantee all materials for the A-1 Deluxe & A3000 Processing Stations according to component manufacturer's warranty.

See below for details:

- Lights - 1 YEAR
- Baldor Motor - 6 Months
- Electrical Switches - 6 Months



We stand behind component warranties as provided to us. American Crematory is not the manufacturer of the components, American installs them as a part of our equipment.



There is NO warranty on the following items:

- Blades
- Bearings
- Drive Shaft
- Processor Pot

American Crematory is not responsible for the use by owner or how it is used, therefore we cannot warranty these parts

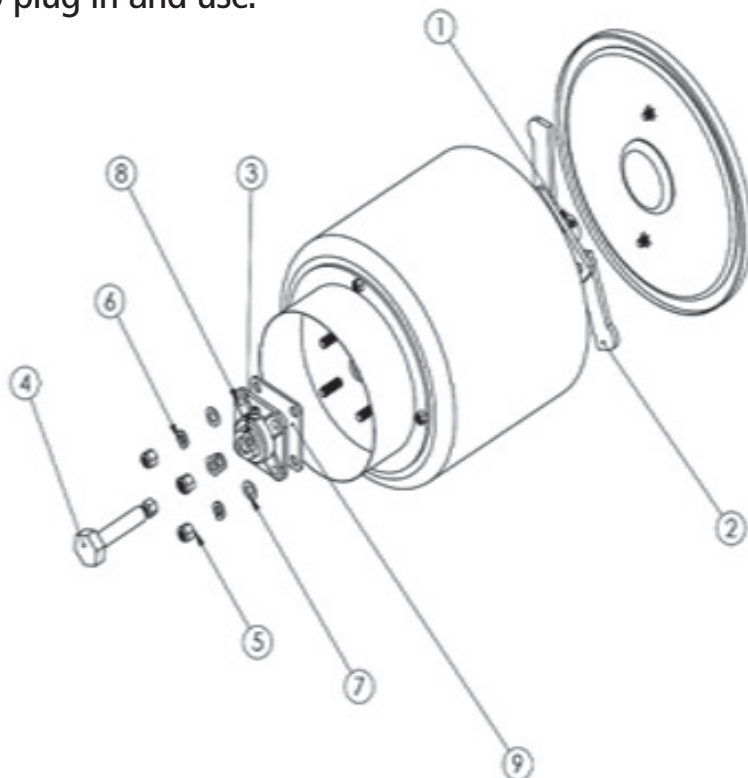
Operating Instructions

- ① Plug into 115 Volt Outlet, with ground
- ② Attach stainless steel drum to drive unit. The drive unit has a 1.25" socket at the center on top. The drum has a 1.25" bolt at bottom. Center the drum onto the socket, the drum will sit flat on top of drive unit when socket and bolt are engaged
- ③ Latch stainless steel drum to drive unit by twisting drum to the right until the safety locks are under the locking plate.
- ④ Remove top lid from stainless steel drum. (The lid fits snug to drum). At the bottom of the drum are processing blades
- ⑤ DO NOT PUT HANDS IN DRUM WHEN DRUM IS ATTACHED TO DRIVE UNIT OR START PROCESSOR WITHOUT LID ATTACHED. * SERIOUS INJURY CAN OCCUR**
- ⑥ Before processing cremations, Lower ash tray empty cremains into tray and remove all metal from cremains with hand magnet. Failure to remove metal will damage drum.
- ⑦ After all metal is removed, empty cremains into drum. Attach lid to drum, ensure the lid is securely sealed.
- ⑧ To operate the processor, simply turn the switch in the front of the base unit to the ON position. The process will take approximately 30 seconds. Turn switch to OFF position. Cremains are now processed. Remove drum from drive unit and remove lid. Turn drum over to pour into Container

Blade & Shaft Replacement

- ▶ Using an 1/8" Allen Wrench, loosen ① Blade Set Screw
- ▶ Once you loosen the Blade Set Screw, the blades should pull up off the shaft.
- ▶ In the event that you cannot pull the blades from the shaft, turn the pot upside down and loosen the set screws ③ Bearing Set Screw, also using an 1/8" Allen Wrench. Flip the pot back over and hit the top of the shaft, using a block of wood or center punch. The shaft should drop out of the drum, freeing the blades.
- ▶ Flip the pot back over again and replace the shaft. Push the shaft ④ against the American pot bearing ⑤ then back it off 1/8". This 1/8" space is important to avoid any rubbing. Apply a drop of Loctite® to the end of the set screws and tighten the set screws on the American pot bearing. ⑤
- ▶ Flip the pot over one last time and place American blades on to the shaft, also lifting blades up an 1/8" to avoid any rubbing. Apply Loctite® onto ① Blade Set Screw and tighten.
- ▶ The processor pot will be ready to plug in and use.

- ① Blade Set Screw
- ② American Blades
- ③ Bearing Set Screw
- ④ American Shaft
- ⑤ 3/8 Nylon Nut
- ⑥ 3/8 Lock Washer
- ⑦ 3/8 Flat Washer
- ⑧ American Pot Bearing
- ⑨ Felt Gasket



Step-by-Step Visual Guide for Blade Replacement

Recommended Tools

- A** 9/16 Ratchet
- B** 9/16 Custom Bearing Removal Tool
- C** Ball-Peen Hammer
- D** Custom Shaft Removal Tool Matthews/American
- E** 1/4 & 3/16 Inch Hex Head Key Allen Wrench



Step-by-Step Visual Guide for Blade Replacement Continued



4. Place key way back into replacement blade.



5. Slide on securely.



6. Make sure blade lays on top of washer welded to bucket.



7. Replace set-screw and tighten with allen wrench.



8. Check to see that blades spin.



9. Place bucket on unit and lock into place.

Manufacturing with Pride

Additional Resources

Visit our YouTube channel online to find troubleshooting and "how to" videos on processor blade replacement, as well as many other American Crematory Equipment Company products.



▶ <https://www.youtube.com/watch?v=CUq86dJDCT0>

Replacement Parts

- American Processor Blades, Swivel PBB0007
 - Swivel Blades Suggested Use: Human
- American Processor Blades, Straight PBB0008
 - Straight Blades Suggested Use: Pet
- American Processor Blades, Heavy Duty PBB0009
- American Processor Bearings PBB0015
- American Processor Shaft PBB0018
- New Processing Drum (Pot) PBB0001
- Felt Gasket N/A

