

American

CREMATORY EQUIPMENT CO.



SALES • SERVICE • SUPPLIES • REPAIRS



MODEL A-350



MODEL A-3000



MODEL AC-1

Welcome to the interactive version of our 2022 Catalog! Just click on the product or page item to connect directly to the website for more info!



DOWNLOAD
OUR APP!



AMERICANCREMATORY.COM



American Crematory Equipment Company is considered the premier manufacturing, service, and repair company in North America and beyond. We have been Manufacturing with Pride™ since our incorporation in 1974. We manufacture, service, and repair with the highest standards and integrity in the industry.

It is with our Manufacturing with Pride commitment that we at American Crematory can bring you, our customers, the latest in technology. Our State-of-the-art Operating Platforms and innovative design and engineering insure you receive the most dependable, reliable, environmentally conscious, cost-effective, and longest lasting equipment with the best warranty on the market today.

Our Philosophy "Service is Everything"™ is simple; always put the customer needs first, have integrity in every aspect of customer service, and be reliable.

Our entire team pride themselves on listening to what the customers' needs are and being committed to complete success.

Everyone at American Crematory Equipment Company practices Service Is Everything and it is what sets us apart from the competition.



CONTACT INFORMATION



American Crematory Corporate Headquarters

14530 Anson Avenue, Santa Fe Springs, CA 90670

Phone (562) 926-2876

Fax (562) 926-2880

Find us online: americancrematory.com

Mike Burwell - CEO

mike@americancrematory.com

John Raggett - Vice President

john@americancrematory.com

Britnie Moniz - GM of Operations & Sales

britnie@americancrematory.com

Supplies Orders

orders@americancrematory.com

Find us on social:

 [/americancrematory](https://www.facebook.com/americancrematory)

 [/americancrematoryequipmentco](https://www.instagram.com/americancrematoryequipmentco)

 [/company/american-crematory-equipment](https://www.linkedin.com/company/american-crematory-equipment)

 [/ACE_Co_](https://twitter.com/ACE_Co_)

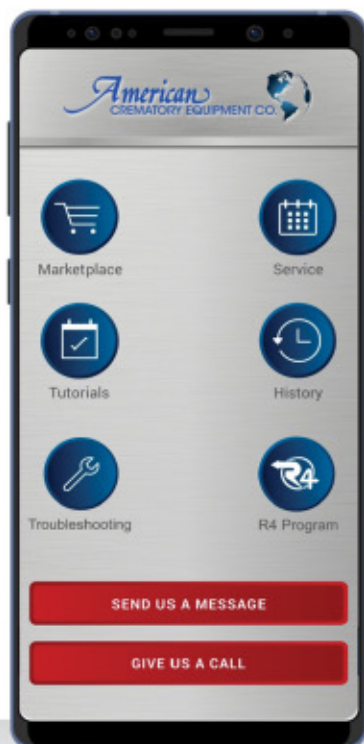
 [search: american crematory](https://www.youtube.com/search?query=american+crematory)

We accept:



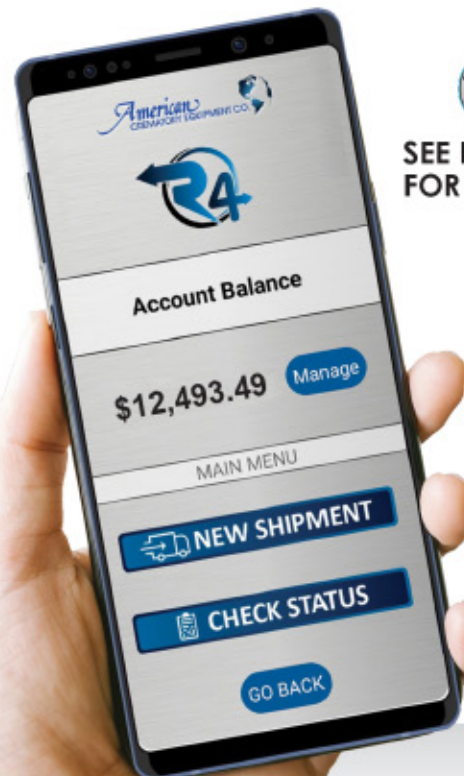
Catalog Printed Version: ©2022 v5.0

INTRODUCING THE AMERICAN CREMATORY APP!



SEE PAGE 19 FOR DETAILS!

INTRODUCING THE R4 APP FROM AMERICAN CREMATORY!



SEE PAGE 21
FOR DETAILS!

Model A-375-S5 "Hot Hearth" Cremation Equipment

The A-375-S5 is our Super Duty Cremator. It features a super large primary chamber and a uniquely designed multi-faceted secondary chamber. The A-375 has a chamber capacity of 1200 lbs. The average cremation time is approximately 70 minutes or less and can perform back to back cremations with no cool down between cremations. This is our most advanced, fully automated model manufactured.

Control Systems Available:

-  ACS-1 PLC & Touchscreen
-  American Instant Access
-  ARIES Operating System
-  Guardian D.A.S.
-  Unified Operating System

ATTENTION

MOST UNITS NEED AN AVERAGE BETWEEN 9FT - 12FT HEIGHT OF SPACE CLEARANCE FOR UNIT INSTALLATION.

**For lower clearances units will have to be stripped and re-assembled in the field at an additional expense.*



A-375-S5 Specifications

Length	14'3" (4.34m)
Width	9'0" (2.74m)
Height	9'8" (2.95m)
Door Width	45" (1.14m)
Weight	42,000 Lbs. (19,051 kg)
Installation Clearance Required	___8' min. (2.44m)
Fuel	Natural Gas, Propane, Butane, Can be Modified to Accept Diesel Oil
Electrical	220V/60Hz/1 Phase or 3 Phase (Nationally) 240/480 1 Phase or 3 Phase (Internationally)
Maximum Fuel Rating	2.5MMBTU/HR @ 2380 CFH
Panel	Right, Left or Remote
Warranty	2 year "Best in Class"

Available in a wide range of colors allowing you or our team to design a comforting setting for your customers.

Lease & Finance Options Available

Model A-350 "Hot Hearth" Cremation Equipment

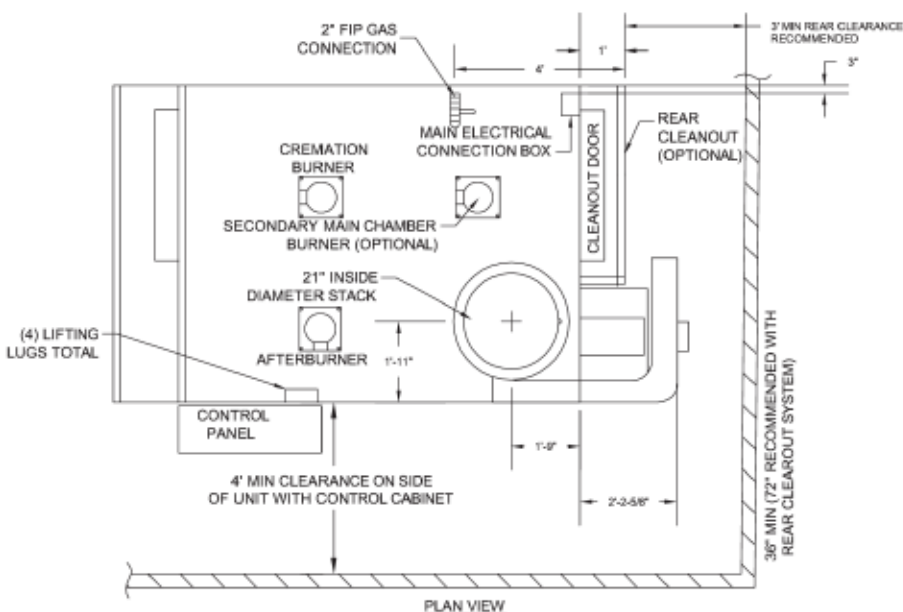
The American A-350 is designed for facilities with high volume and production requirements. It implements the Trilogy Combustion System, the most advanced flame safety control in the industry (made by Siemens).

The multi-chamber design allows for rapid cremation time of approximately 100 minutes or less. The A-350 also has the advantage of many design options to accommodate your specific installation needs.

Unique design features available on the A-350 include automatic monitoring combustion control (ensuring maximum efficiency) oversized loading door and the Vortex exhaust stream opacity control system. The A-350 also incorporates a unique ash pan cooling system featuring integrated air jets to reduce the cremated remains cool down time prior to processing.

Control Systems Available:

-  ACS-1 PLC & Touchscreen
-  American Instant Access
-  ARIES Operating System
-  Guardian D.A.S.
-  Unified Operating System



A-350 Specifications

Length	12'5" (3.78m); 14'6" (4.42m) with Blower
Width	8'0" (2.44m); 9'0" (2.74m) with Panel
Height	9'5" (2.74m)
Door Width	45" (1.14m)
Weight	38,000 Lbs. (17,237 kg)
Installation Clearance Required	8' min. (2.44m)
Fuel	Natural Gas, Propane, Butane, Can be Modified to Accept Diesel Oil
Electrical	220V/60Hz/1 Phase or 3 Phase (Nationally) 240/480 1 Phase or 3 Phase (Internationally)
Maximum Fuel Rating	2.5MMBTU/HR @2380 CFH
Panel	Right, Left or Remote
Warranty	2 year "Best in Class"

Available in a wide range of colors allowing you or our team to design a comforting setting for your customers.

Lease & Finance Options Available

Model A-300 "Hot Hearth" Cremation Equipment

The A-300 is built for volume and production with an average cremation time of 90 minutes or less.

It implements the Trilogy Combustion System, the most advanced flame safety control in the industry (made by Siemens). The Trilogy System's remote display provides pinpoint diagnostic information, making troubleshooting immediate and accurate.

The A-300 is a very versatile crematory in our product line. The A-300 has the ability to accommodate a variety of operating and installation configurations. The A-300 is a multi-chamber cremator designed to cremate oversized cases and hardwood caskets.

The A-300 also incorporates a unique ash pan cooling system featuring integrated air jets to reduce the cremated remains cool down time prior to processing.

Minimize Downtime

With the American "Trilogy" Combustion Control System (shown here) you get the advantage of increased fuel efficiency, advanced monitoring and diagnostic capabilities.

The "Trilogy" system allows for immediate and accurate troubleshooting, decreasing and/or eliminating costly down time. American Crematory Equipment Company is proud to offer a wide range of operating systems and technology to meet every customer's needs.



A-300 Specifications

Length	10'2" (3.10m); 12'6" (3.81m) with Blower
Width	7'0" (2.13m); 8'0" (2.44m) with Panel
Height	9'4" (2.84m)
Weight	32,000 Lbs. (14,515 kg)

Installation Clearance Required 8' min. (2.44m)

Fuel Natural Gas, Propane, Butane, Can be Modified to Accept Diesel Oil

Electrical 220V/60Hz/1 Phase or 3 Phase (Nationally)
240/480 1 Phase or 3 Phase (Internationally)

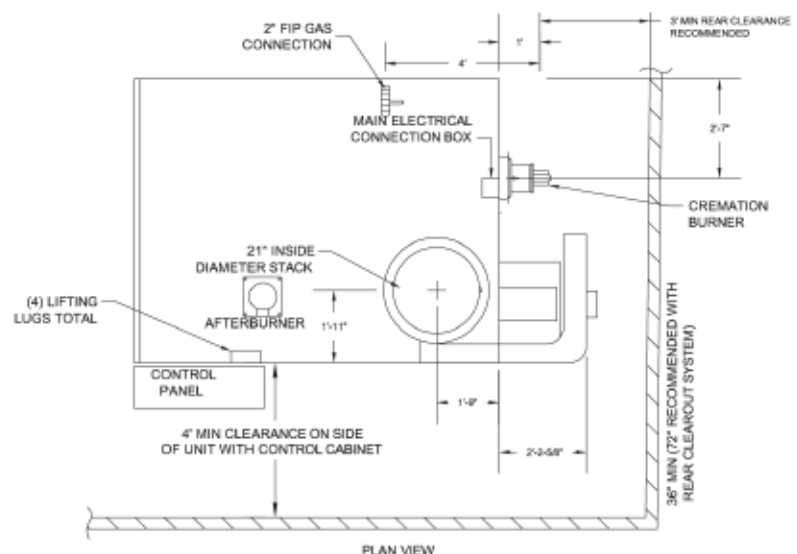
Maximum Fuel Rating 2.5MMBTU/HR @2380 CFH

Panel Right, Left or Remote

Warranty 2 year "Best in Class"

Available in a wide range of colors allowing you or our team to design a comforting setting for your customers.

Lease & Finance Options Available



Just click on any product or link to connect directly to the website!

Model A-250 "Hot Hearth" Cremation Equipment

The American A-250 has become one of the most popular models in our product line. It features a large capacity primary chamber and a 45" loading door opening. With the addition of our proprietary operating systems, you can rest assured you will be operating one of the most efficient machines available. The A-250 allows first time buyers room for growth as their business increases.

Control Systems Available:

-  ACS-1 PLC & Touchscreen
-  American Instant Access
-  ARIES Operating System
-  Guardian D.A.S.
-  Unified Operating System

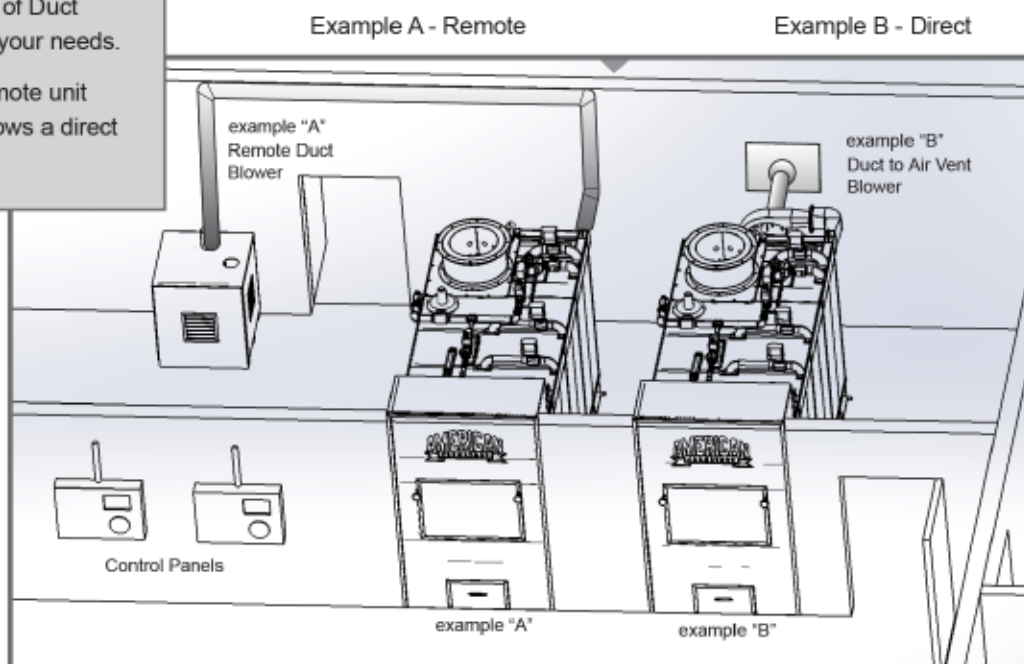


Full A-250 specifications can be found on page 29

Duct Blower Options

We can offer two types of Duct Blowers depending on your needs.

Example A shows a remote unit version. Example B shows a direct duct-to-air vent blower.



Model A-200 "Hot Hearth" Cremation Equipment

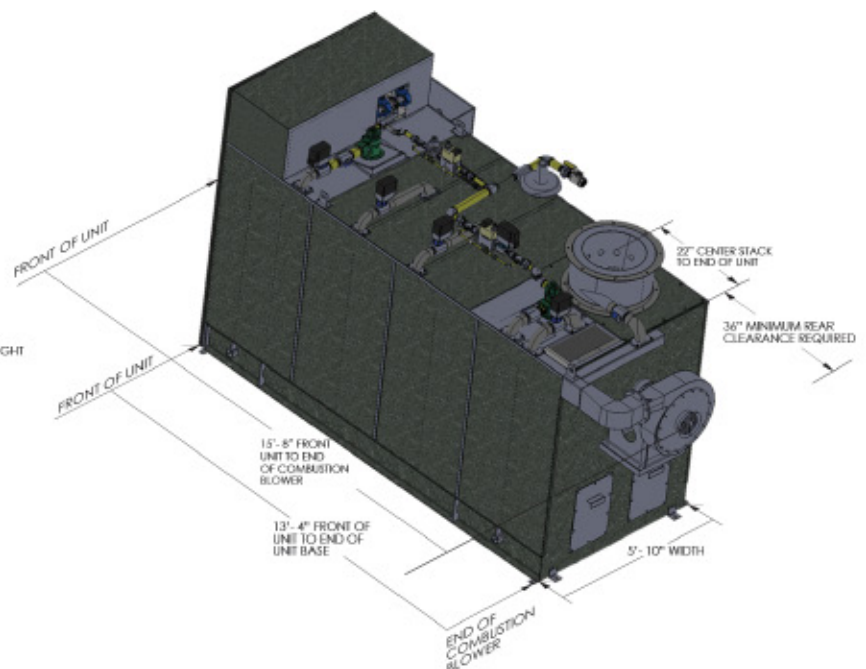
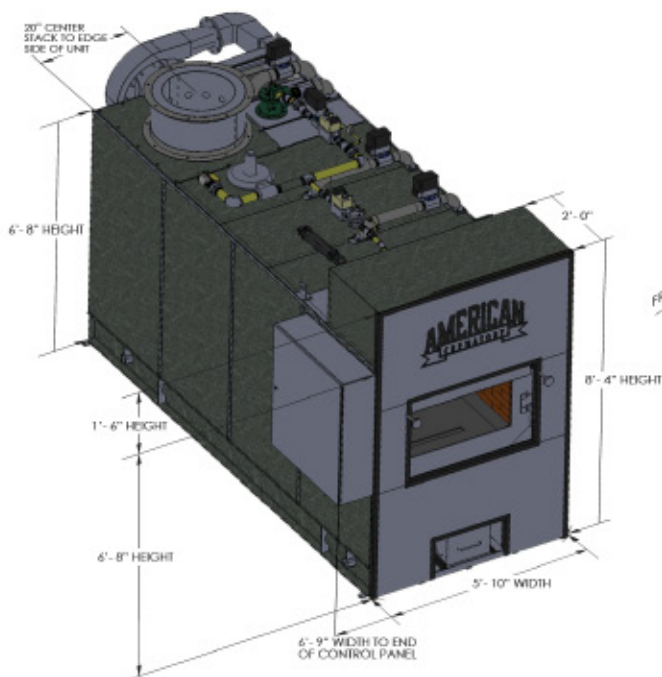
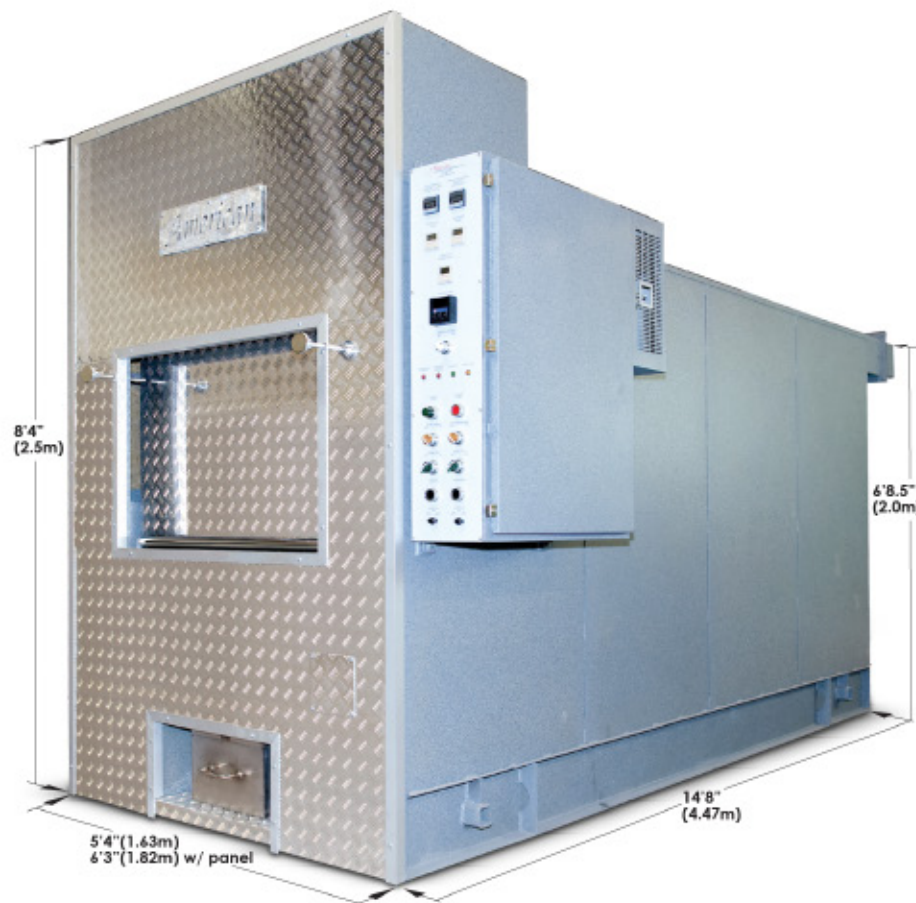
The American A-200 Model is our entry level cremator.

With an average cremation time of approximately 120 minutes or less, the A-200 can easily perform 4 cases per 8-10-hour day. The primary feature on the A-200 is "Throat Air" and "Hearth Air" Control. Throat Air allows the operator the ability to effectively control and eliminate stack emissions. Hearth Air allows the operator full control of the primary chamber over fire air which effectively decreases cremation times. Additionally the combustion process is cycled and monitored by automatic temperature and timer controls which ensure fuel efficiency.

Minimize Downtime

With the American "Trilogy" Combustion Control System (shown here) you get the advantage of increased fuel efficiency, advanced monitoring and diagnostic capabilities.

The "Trilogy" system allows for immediate and accurate troubleshooting, decreasing and/or eliminating costly down time. American Crematory Equipment Company is proud to offer a wide range of operating systems and technology to meet every customer's needs.



Just click on any product or link to connect directly to the website!



UNIFIED OPERATING SYSTEM

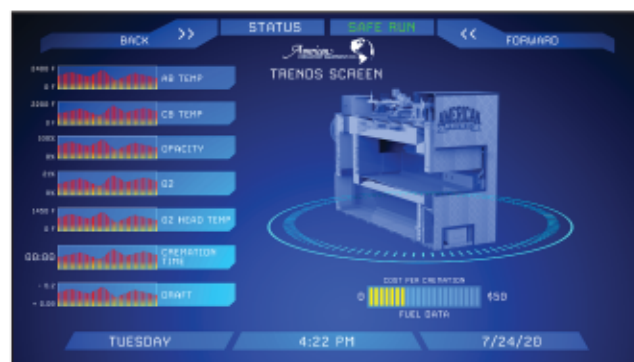
Introducing the top of the line Operating System in the Cremation Industry.

Introducing American Crematory's Unified Operating System. Unified OS encompasses all of the advanced features our clients have come to love with our Instant Access, Guardian D.A.S., and Aries Systems. However, the Unified platform goes even further. The updated hardware and software package, user interface, and HMI design is unprecedented. Not only is the system visually appealing, it is a one-of-a-kind scalable graphic design. (Operates just like a smart device). The Unified OS was developed to maximize throughput, efficiency, control and increase operator ability.

Users will find the system helps them do their jobs more effectively. The organizational features on the back end will help owners, managers and operators track how efficiently their equipment is running. Unified turns your cremation unit into a smart logic piece of equipment and helps ensure the future success of your business.

BENEFITS OF UNIFIED:

- Updated User Interface. Experience the new sleek blue design.
- Advanced functions designed to maximize throughput for your business.
- H.M.I - Built-in new & improved D.A.S. Next level human machine interface.
- Maintenance Reporting: Provides detailed Service and Repair History for your cremation system in PDF format. (Provides the customer the ability to track and monitor the cremation system for budgetary purposes).
- Maintenance Notifications: Provides operators with illuminated messages to remind him/her when specific service issues need to be addressed.
- Data Storage: Stores all of your cremation system's data in the "cloud".
- Communication Link Directly to American Crematory Equipment Co., allows "ACE" to access your cremation system to provide immediate troubleshooting and diagnostic support.
- Operator Assistance: Our direct link allows "ACE" the ability to control, monitor and assist your staff with the cremation process of a difficult or specialty case.
- O2 Monitor and Control, allows "ACE" to make adjustments via the internet to your cremation system to insure peak performance and efficient operation.
- Web Cam: Optional web cam allows you to monitor the cremation room and stack emissions during operation.
- Trending / Analysis program
- Production Reporting: Immediate access to daily, monthly, and YTD reports in PDF format.
- Program for Days Run and Weeks Run
- Dashboard of Production
- Turns your unit into a smart logic piece of equipment.
- Smart Touch-Screen control & operation.
- PC Interface: Remotely access your cremation system through virtual network computing anywhere the internet is available.
- Tablet option available
- No computer tower necessary
- The computer can be built into the H.M.I.



**Images are for conceptual purposes only. Final product look may vary.*

NO MONTHLY FEE REQUIRED!

AMERICAN CREMATORY OPERATING SYSTEMS

All of the American Combustion Systems (except the AE models) come standard with our "TRILOGY" operating platform. The TRILOGY system is a Siemens-based platform that includes Siemen's flame safeguards, remote display and resets, motor starters, relays contacts, actuators and butterfly valves. This system is engineered to outperform the competition and provide our customers with piece-of-mind. Our engineering and product implementation is how we can give a 2 & 3-year component warranty. American Crematory has the best warranty in the industry.

Options for our operating and control systems are as follows.



AMERICAN STANDARD

This is our original operating system. It is an electromechanical or "EM" system. It includes the "Trilogy" combustion control system. The EM electromechanical (manual) control requires the operator to control the entire cremation process. The primary feature on the EM system is the "Throat Air" and "Hearth Air" Control. Throat Air Control allows the operator to effectively eliminate stack emissions. Hearth Air Control allows the operator to control the primary chamber excess air which decreases cremation times thus saving fuel cost. The combustion process is cycled and monitored by temperature and timer controls which ensure maximum efficiency throughout the cremation process. Comes with a one-year component warranty.



ACS-1 PLC & TOUCHSCREEN

This operating system is our Automated Control System or ACS. The system includes the "TRILOGY" system as well as an onboard CPU that controls every function of the cremation process automatically. The PLC is also a Siemens Platform. It incorporates a 15" touchscreen control panel with excellent graphic presentation. The operator inputs the information into our custom designed "Case Builder" and the unit will perform all the operations for the cremation process automatically. The ACS also has a "Manual Run" feature that allows the operator to override the process if necessary. Comes with a two-year component warranty.



AMERICAN "INSTANT ACCESS"

This operating system employs all the features of the ACS-1, and allows for greater throughput with our "Hot Load" capability. Additionally, we install a Siemens Router and supply the customer with a tablet that has our Smart Client Platform. This system can be remotely monitored and controlled by the operator. The Instant Access allows our staff to continuously monitor the system from our office, laptop or smart devices. American Crematory can instantly access the client's units with a click of a button on our end. This allows our service team to diagnose, trouble shoot, and solve any problem at anytime from anywhere in the world. Unlike our Competition we do not charge a monthly fee for this service. Comes with a two-year component warranty.



ARIES OPERATING SYSTEM

The ARIES operating system employs all the features of the ACS-1 and Instant Access systems. The Aries System has the latest ACE Engineered "Unified Technology" providing superior combustion control and communication. This system allows for greater throughput with our "Hot Load" capability. Additional features include O₂ (Oxygen) Monitoring & Control, Draft Control, Fuel Monitoring & Control, Fuel Cost Calculation, and a High-Velocity Combustion System. The Aries System also has built in transmitters and a proprietary smart logic system that allows for remote tuning of the combustion system. The ARIES OS will truly make a difference in the capacity of your cremation equipment. It also comes with a three-year component warranty. Ask about our optional service agreement.



GUARDIAN D.A.S. (DATA ACQUISITION SYSTEM)

The Guardian D.A.S. employs all features of the ACS-1, Instant Access, and Aries OS. This system allows for greater throughput with our "Hot Load" capability. Additional features include PC or HMI/PC interface, Dash Board View of all production and log data, Production Reporting of daily, monthly and yearly data, Maintenance Data Reporting and History, Maintenance Notifications, Data Storage, Web Cam-Stack Emissions Monitoring, and has a three-year component warranty. Ask about our optional service agreement.

SYSTEMS COMPARISON CHART

						
	American Standard	ACS-1 PLC & HMI	American "Instant Access"	Aries	Gardian D.A.S.	Unified
FEATURES	INCLUDED	UPGRADE	UPGRADE	UPGRADE	UPGRADE	UPGRADE
Electromechanical Control System	✓					
Automated Combustion Control System		✓	✓	✓	✓	✓
Trilogy Flame Safeguard System	✓	✓	✓	✓	✓	✓
Onboard CPU		✓	✓	✓	✓	✓
Comfort HMI "12		✓	✓	✓	✓	
Unified HMI "15						✓
Custom Designed Operator Interface		✓	✓	✓	✓	✓
Oxygen, Draft, & Fuel Control				✓	✓	✓
Siemens Combustion Control Package		✓	✓	✓	✓	✓
American "Instant Access" and Tablet			✓	✓	✓	✓
Hot Load & Obese Capability			✓	✓	✓	✓
Remote Fine Tune Capability				✓	✓	✓
Smart Screen HMI						✓
View & Print All Production Data					✓	✓
.New and Improved D.A.S						✓
No Computer Tower Necessary	✓					✓
Dashboard of Production Data					✓	✓
Advanced Designed Operator Interface						✓
Trending & Analysis Reports						✓
No Monthly Fee & 24/7 Tech Support	✓	✓	✓	✓	✓	✓
Warranty	1 Year*	2 Year*	2 Year*	2 Year*	3 Year*	3 Year*



ENGINEERED WITH INTEGRITY

Our Panel Division "American Controls & Equipment Co., Inc." supplies a wide variety of custom control panel solutions to meet the demands of our customers and various other industries. We are built on providing high quality workmanship, on-time delivery and competitive pricing.

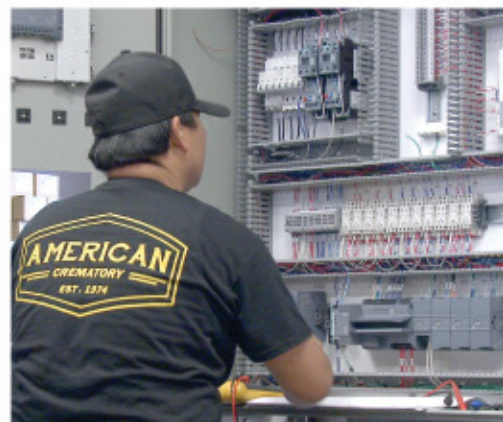
Our services include:

- Complete control solutions
- Custom-built panels based on customer supplied documentation
- Single-panel or complete system designs Turnkey services by handling procurement of all materials
- Consignment projects where the customer supplies some of or all the required parts

All panels are full functioning and tested prior to shipment.

We subject our products to rigid inspection procedures offering North American/ Canadian UL508-509CE approval. Whether your requirement is for the assembly and wiring of a control panel or designing a complete system, American Controls & Equipment Co., Inc. can provide a cost effective, efficient solution that is both accurate and delivered on time.

We're here to help you meet your needs in any way possible to deliver an outstanding product. We stand behind our work!



Refer to the YouTube video:
"The American Difference - Siemens Control Panel"
 to learn more about our top-of-the-line control panel.

Customer service is our number one priority!

Call us to discuss your next project.

OPERATOR TRAINING

Operator Training & Certification Programs Associated with ACC & CANA



Cremation
Association
of North America



Top 11 Reasons Why You Need To Get Cremation Certified!

1. Get tools, including forms to enforce proper cremation procedures
2. Troubleshoot problems with cremators
3. Extend the life of your cremator
4. Learn how to properly inspect third-party crematories
5. Calculate the return on investment of buying a cremator
6. Navigate familial disputes while protecting your business
7. Avoid pitfalls that lead to lawsuits
8. Document everything you need in case you end up in court
9. Minimize problems when you make a mistake
10. Provide families with added peace of mind by becoming certified
11. Optional on-site training available. Call for quote & schedule.



"On Site" Crematory Certification Training Class Itinerary

- The afternoon will consist of hands on instruction of the cremation unit, teaching everyone how to properly operate the unit safely, review safe guards, trouble shoot the equipment and provide a detailed explanation of the controls of the cremation unit.
- We will also do a cremation with you as long as a case is available, and if not, we will simulate the cremation process.
- Once everyone has successfully completed the Crematory Certification Training Class, Certificates will be mailed to your firm for every individual who attended the program.



Electric Cremated Remains Processors

Our cremated remains processors are engineered to reduce bone fragments to fit into a standard urn size. Each drive unit is equipped with an industrial rated motor with direct drive to the drum and shaft. Additionally, all of our processors are equipped with overload protection. Our stainless steel processing blades pulverize bone fragments in an average time of 30 seconds or less.



AMA0006
Stainless Steel

NEW DESIGN!



AMA0005
Black Powder Coated
- Also available in Stainless

A-1 Deluxe Processing Station

The American A-1 Deluxe Processing Station is engineered to reduce bone fragments to fit into standard size urns, while providing ease of operation with a convenient work space, built-in fan system, built-in lighting system, and exterior venting.

Includes:

- Built in Urn Loader
- Urn Cooling Station
- 30.5" x 51.5" x 74.5"
- Direct Drive Process (no belts to change or tighten)
- Plugs into standard 110V outlet
- Personalized Light Bar to Display Your Facility Name
- Customized Light Bulb Color Option
- Your Choice of Processing Station Powder Coating Color

AMA0006	A-1 Deluxe Processing Station - Stainless Steel
AMA0005	A-1 Deluxe Processing Station - Powder Coated



A-3000 Processing Station

- Plugs into a standard 110 volt outlet
- 30.5" x 51.5" x 74.5" including drum

Includes:

- LED Lighted Processing Area
- Ventless and dustless filter system with optional ducting to outside air or collection (bag house)
- 39" Process and Magnetizing Tray
- Twist & lock processing drum
- Direct drive process (no belts to change or tighten)
- Swivel casters for mobility
- Built in storage cabinet for supplies
- American Crematory Laser etched logo or optional personalized logo

AMA0007 A-3000 Cremains Processing Station
Shown here in "Stamped Stainless"



A-2000 Processor

- Mounted on casters for easy movement
- Plugs into a standard 110 volt outlet
- 16" x 16" x 38" including drum

AMA0003 Gray Zolotone



A-2000-S Ventless Processing Station

- Features a built-in fan with replaceable filter
- No exterior venting necessary
- 30" x 30" x 61"
- Heavy duty stainless steel construction
- Requires a 110 volt dual plug outlet with a
- 30 amp breaker

AMA0004 Ventless Processing Station

AC-1 Cremator Charger

American Crematory's cremator charger is designed with health and safety in mind to allow for safe, single-person, unassisted operation, while minimizing the risk of physical and repetitive strain injuries. One-of-a-kind docking station provides unique compatibility with your crematorium ensuring optimum, efficient, and safe charging, while reducing operating costs to save you money. The auto charging system's rapid charge speed also offers improved dignity for the deceased over manual charging.

AMA0018 AC-1 Auto Charger

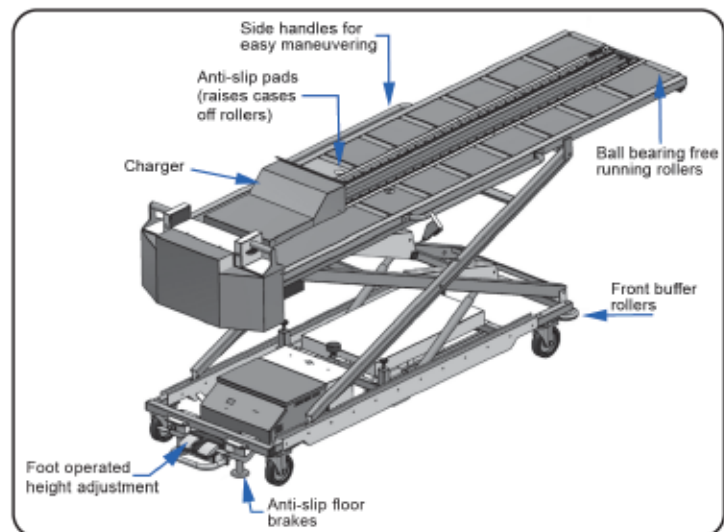
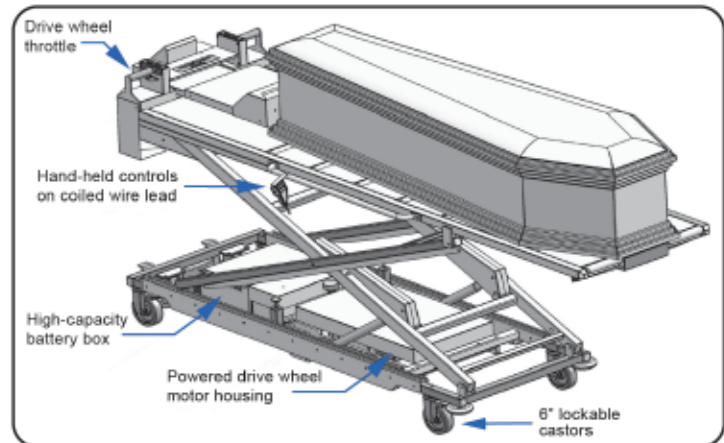
FEATURES INCLUDE:

- **Heavy-Duty Charge** - adjustable charge on cases up to 1000 lbs (412kg), including traditional wooden caskets and cardboard varieties
- **Rapid Charge Speed** - adjustable down to 3.5 sec ensuring the cremator door is open for minimum time
- **Easy-to-use Foot Pedal Locking Brake System** - the charger can be locked to the floor for safe, stable charging
- **Single Operator Use** - whereas manual charging can require two technicians, automatic charging requires only one, freeing up staff for other duties
- **One Charger Suits All** - wide lifting range to enable loading and unloading of cremators, coolers, body storage/racking systems, and hearses
- **Powered Drive System** - patented retractable 5th wheel powered drive system with proportional throttle control
- **Secure Locking System** - by the press of a button, the case can be securely locked & unlocked for transportation
- **Digital Weighing Option** - integral weighing device to confirm charging weight to assist with accurate casket location in the cremator, while ensuring the safety of operators and compatibility to cremator ovens
- **Single & Double Ended Cremators** - controlled positioning compatibility of the casket beyond the hopper/cleanout for use with single or double ended cremators
- **Dual Handset Controls** - allows simultaneous use of cremator and charger controls from both sides of the charger
- **Increased Control** - superior positioning of the casket into the cremator, which minimizes process times, reducing energy costs



Dimensions

Length	Base Unit 7'4" (2.24m)
	Overhang 2'6" (.762m)
Width	2'10" (.863m)
Height	Max 6'8" (2.03m)
	Min 1'9.5" (.546m)



LT-1 Hydraulic Lift Tables

The American table is designed for use in loading crematories, funeral coaches, vans or coolers. It offers ease of use, maneuverability, and durability. There are no pedals or pumps to operate. A narrow frame and large casters permit its use in tight spaces. The platform has five rollers and a locking mechanism to keep the load stationary.

The heavy duty 12 volt battery will operate the lift table continuously for many hours without charging.

AMA0008 Battery Powered Hydraulic Lift

AMA0009 Battery Powered Hydraulic Lift - with Scale

Specifications

Length	73 inches
Width	30 inches
Max Height	74.5 Inches
Height when lowered	22 inches
Weight Capacity	400-500 lbs.
Upgrade Option:	Built-in weight monitoring system



Multi-Directional Lift Table Top

Allows the operator to load and unload an inside cooler with ease, work in tight spaces, and load the cremation equipment from any angle.

HD-2 Heavy Duty Hydraulic Lift Table

The HD-2 is designed to provide you with the ability to lift, load and store heavy caskets and cases with ease. The HD-2 is constructed with HD 1020 carbon steel for strength and durability. The automatic push button remote can be removed or holstered for operation. The HD-2 is designed to lift and load up to 1200 lbs. The HD-2 also has the option of an onboard scale system so you know exactly what the load weight is.

AMA0010 Heavy Duty Battery Powered Hydraulic Lift

AMA0011 Heavy Duty Battery Powered Hydraulic Lift - with Scale

Specifications

Length	73 inches
Width	30 inches
Max Height	74.5 inches
Height when lowered	20 inches
Weight Capacity	1000 lbs. +
Upgrade Option:	Built-in weight monitoring system



LIFT TABLES AND CHARGERS

UNIT COMPARISON CHART



LT-1 Lift Table

HD-2 Lift Table

AC-1 Auto Charger

RETAIL

\$5,495.00
\$6,995.00 w/Scale

\$6,995.00
\$8,495.00 w/Scale

\$25,995.00 w/Scale

FEATURES

Maneuverability



400-500lb Capacity



1000lb Capacity



Locking Mechanism To Keep
Load Stationary



Optional Scale



HD Carbon Steel



Hardened Cold Rolled Steel



Rapid Charge Speed/
Built In Charger



Foot Pedal Brake System



Powered Drive System



Dual Handset Controls



Increased Control



Heavy Duty Casters



Height

74"

78"

78"

Optional Safety Skirts



Optional Multi Directional
Roller Table



UNIT COMPARISON CHART



A-2000



A-2000S



A-3000

A-1 Deluxe
Powder CoatedA-1 Deluxe
Stainless Steel

RETAIL

\$4,595.00

\$7,995.00

\$8,999.00

\$10,999.00

\$12,999.00

FEATURES

Motor Horsepower

1.0hp

1.5hp

1.5hp

1.5hp

1.5hp

Mounted on Casters for
Easy MovementBuilt-in Rear Mounted Fan
with Replaceable Filter

No Exterior Venting Duct



LED Processing Area



Built In Storage



Exterior Venting



LED Light Bar



Custom Powder Coating



Large Work Space



Urn Loader



Cooling Rack



Optional Exterior Vent - Duct

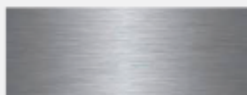


AVAILABLE OPTIONS

STAINLESS STEEL

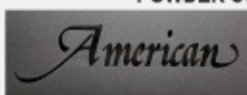


STAMPED

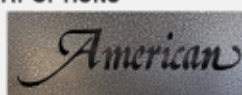


BRUSHED

POWDER COAT OPTIONS



BLACK



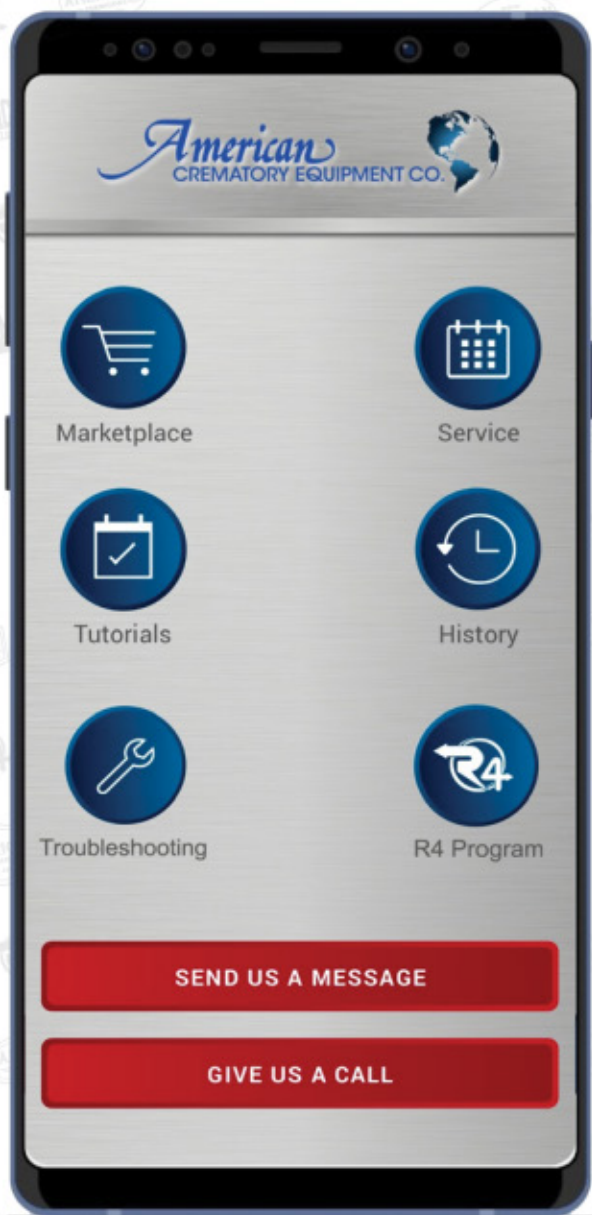
WRINKLED TEXTURE

GRAY ZOLATONE



TEXTURED

INTRODUCING THE AMERICAN CREMATORY APP!



YOUR ONE-STOP-SHOP FOR ALL THINGS AMERICAN CREMATORY!

Schedule Service Calls



Troubleshoot Problems



Watch Video Tutorials



Access Our Marketplace



View Your Service History



Access The R4 Program



Search "American Crematory"
in your preferred app store
and look for this icon



The American Crematory app is available and compatible
with both Apple and Android phones.

Or visit americancrematory.com for a direct link to the downloads!



Introducing American Crematory's R4 Processor Unit & Starter Kit!



The most comprehensive metallic recycling processor unit for anyone in the crematory industry.



Recover



Recycle



Reprocess



Reward

Access The R4 Program, schedule service calls, troubleshoot problems, watch video tutorials, and access our cremation supply marketplace all in the palm of your hand with the American Crematory mobile app!

R4 STARTER KIT

Start your R4 process with the right equipment:

ACC0141	Scale
ACC0142	Sifter
ACC0143	Mortar & Pestle
ACC0035	Handle Magnet



Introducing American Crematory's R4 Program



Our Commitment:
To Honor And Respect
The Link Between Our
Natural Environment
And The Dignity Of
Being Human.

Access The R4 Program, schedule service calls, troubleshoot problems, watch video tutorials, and access our cremation supply marketplace all in the palm of your hand with the American Crematory mobile app!



Search "American Crematory" in your preferred app store and look for this icon



The American Crematory app is available and compatible with both Apple and Android phones.

Or visit americancrematory.com for a direct link to the downloads!

Download - Register - and Get Started!

The most comprehensive and streamlined metallic recycling process for anyone in the crematory industry.



Recover

You'll have four collection containers; two for ferrous metals, and two for non-ferrous.



Recycle

Breakdown of lot will be available in Portal.



Reprocess

Send full containers for processing. A new one will be sent to you automatically.



Reward

Your client earnings will be updated with lot value.



Account Spend Options:

You can convert your available balance into americancrematory.com website credits! Just use the redeem button in the R4 section of the app! You control how much you want to redeem!



You can apply your balance to American Crematory's entire printed and online catalog of equipment and service's for a 103% value. If you're going to spend company cash on equipment and service, you might as well get more for your money.



**NEW
EQUIPMENT**



**SERVICE &
MAINTENANCE**



SUPPLIES



**CHARITABLE
DONATION**



CASH



**REFRACTORY
REPAIRS**

Model A-250P-5 SXS "Hot Hearth" Cremation Equipment

The American A-250P-SXS is ideal for high-volume facilities that wish to maximize workable space through a custom built unit that fits your building's space.

The American A-250P-SXS is ideal for high-volume facilities that wish to maximize workable space through a custom built unit that fits your building's space. The benefit of being able to place the unit against a wall thus maximizing workable floor place.



These units also have independently operated chambers for private cremations with the ability to process multiple pets at the same time. Each chamber has an independent combustion control allowing for the operation of a single chamber or any combination of all five chambers. The new SXS is available in 2-8 chamber design. Additional chambers are possible but the unit will have to be built on site. The A-250P-SXS will allow your business to operate in the most efficient and effective way.

A-250P-5 SXS Specifications

Length	29'10" (9.09m)
Width	9'6" (2.90m); 10'3" with panel (3.12m)
Height	8'8" (2.64m)
Door Width	40" (1.02m)
Weight	73,000 Lbs. (33,112 kg)
Installation Clearance Required	9' min (2.7m); 10' (3.05m) Recommended
Fuel	Natural Gas or LPG
Electrical	220V/60Hz/1 Phase or 3 Phase (Nationally) 240V/50Hz/1 Phase or 3 Phase (Internationally) 60 AMP Minimum Requirement
Maximum Fuel Rating	4.5MMBTU/HR @ 4285 CFH
Panel	Electromechanical or PLC with HMI
Warranty	2 year "Best in Class"

Available in a wide range of colors allowing you or our team to design a comforting setting for your customers.

Lease & Finance Options Available

ATTENTION

MOST UNITS NEED AN AVERAGE BETWEEN 9FT - 12FT HEIGHT OF SPACE CLEARANCE FOR UNIT INSTALLATION.

*For lower clearances units will have to be stripped and re-assembled in the field at an additional expense.



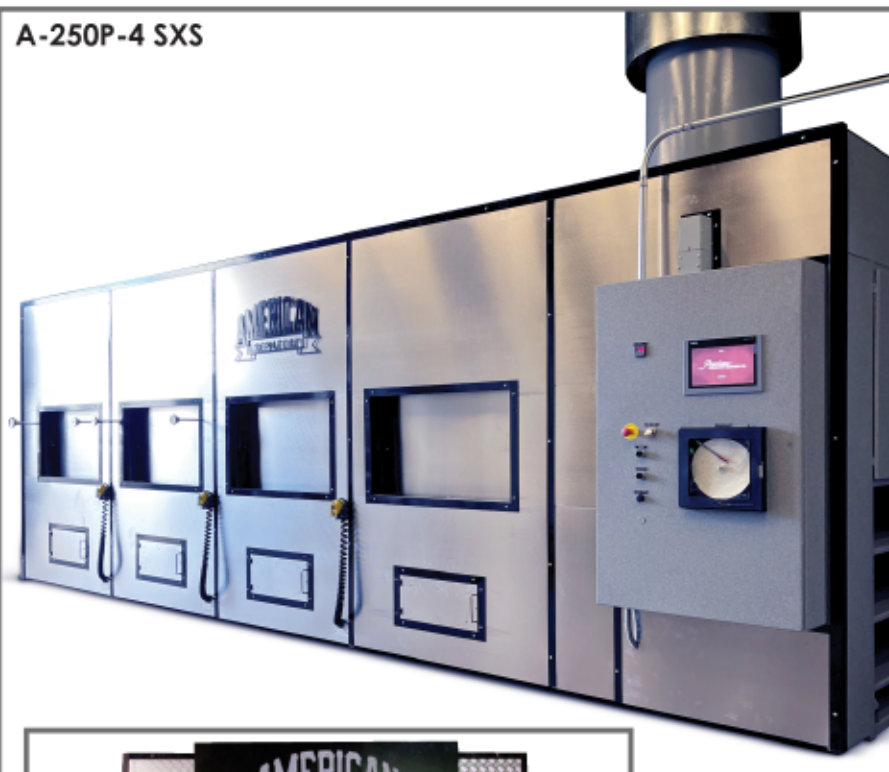
Multi-Chambered "Hot Hearth" Pet Cremation Equipment

Our Multi-Chamber pet equipment is amongst the finest built Pet Cremation Equipment on the market today. These units can be configured to meet your individual business needs, ranging from a single chamber up to a 10-chambered unit. Each chamber is operated independently and can accommodate 150+ lb. animal. These types of units allow you to grow your pet business with the advantage of having private cremations in each individual chamber, providing peace of mind for your customers.

A-250P-4 SXS (Shown)

Our A-250P-4 SXS pictured here has 4 chambers side-by-side. Chamber sizes range from 30" to 58" wide. Our UL Panel Division has engineered and built some of the best control systems on the market today. Customers can choose from a Manually Controlled System or a state of the art Siemens PLC System.

A-250P-4 SXS



A-250P-Quad SXS

Length	22'10.5" (6.97m)
Width	8'5" with panel (2.56m)
Height	9'6" (2.895m)
Weight	64,000 Lbs. (29,029 kg)
Installation Clearance Required	10'3" min (3.12m)
Fuel	Natural Gas, Propane, Butane, Can be Modified to Accept Diesel Oil
Electrical	220V/60Hz/1 Phase or 3 Phase (Nationally) 240V/50Hz/1 Phase or 3 Phase (Internationally) 60 AMP Minimum Requirement
Maximum Fuel Rating	6.0MMBTU/HR
Panel	Front or Remote
Warranty	2 year "Best in Class"

Available in a wide range of colors allowing you or our team to design a comforting setting for your customers.

Lease & Finance Options Available

Additional Models

Custom built options to fit your needs. From 1-10 chambers:

- A-250-P-8: 8 Chambers
- A-250-P-6: 6 Chambers
- A-250-P-5 SXS: 5 Chambers
- A-250-P-5: 5 Chambers
- A-250-P Quad: 4 Chambers (Shown)
- A-250-P-3: 3 Chambers
- A-250-P Double: 2 Chambers
- Single Side Loading Chambers

A-250P-5 Shown here
with custom wrap



Model A-250P-5 "Hot Hearth" Cremation Equipment

The American A-250P-5 is Ideal for High-Volume facilities that desire completely private cremations while processing multiple pets at the same time. Our Multi-Chamber units are truly independently operated chambers. The A-250P-5 has one large chamber in the front and two medium chambers on each side. Each chamber has independent combustion control allowing for the operation of a single chamber or any combination of all five chambers. The A-250P-5 will allow your business to achieve a level of service to your clients that is unparalleled. All of the American models come standard with independent hydraulic loading doors, no counterweight or "cooler" style loading doors. Multi-Chamber units can be wrapped for a very appealing visual experience for your clients while witnessing of private cremations.

A-250P-5 Specifications

Length	17'0" (5.18m)
Width	7'8" (2.34m); 8'8" with panel (2.64m)
Height	8'6" (2.59m)
Door Width	40" (1.02m)
Afterchamber Loading Opening	4 @ 29" x 36"; 1 @ 39" x 48"
Weight	38,000 Lbs. (17,237 kg)
Installation Clearance Required	9' min (2.7m); 10' (3.05m) Recommended
Fuel	Natural Gas, Propane, Butane, Can be Modified to Accept Diesel Oil
Electrical	220V/60Hz/1 Phase or 3 Phase (Nationally) 240V/50Hz/1 Phase or 3 Phase (Internationally) 60 AMP Minimum Requirement
Maximum Fuel Rating	4.0MMBTU/HR @ 3809 CFH
Panel	Right, Left or Remote
Warranty	2 year "Best in Class"

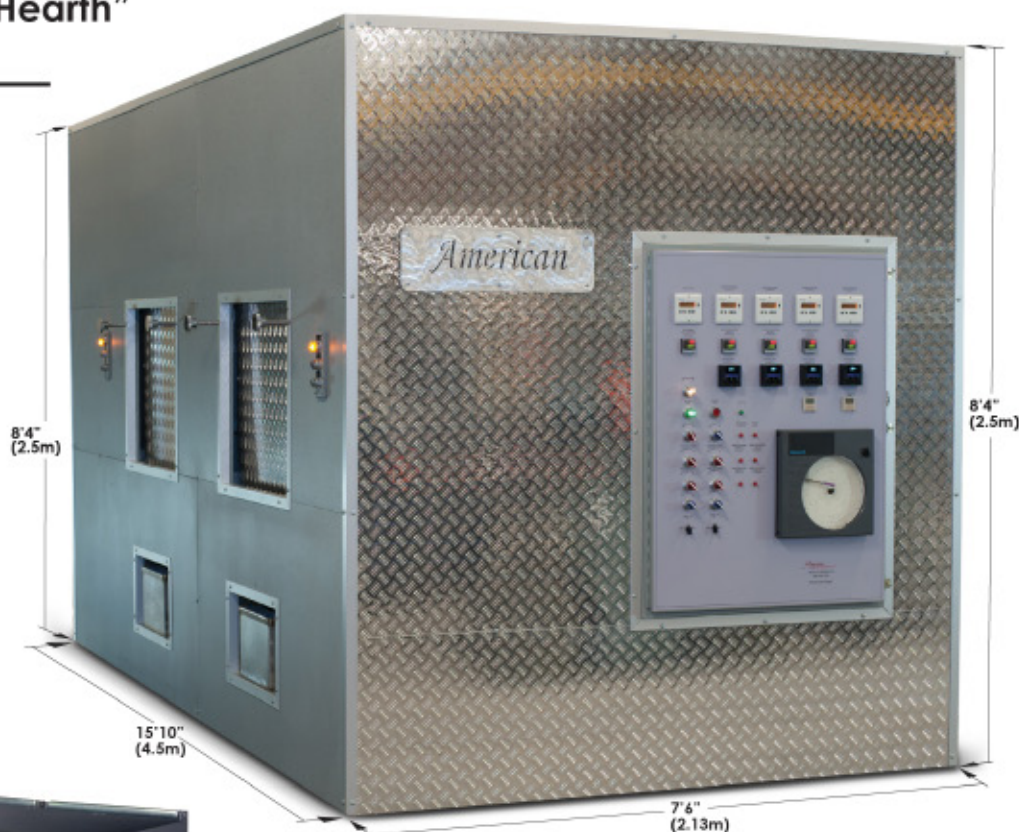
Available in a wide range of colors allowing you or our team to design a comforting setting for your customers.

Lease & Finance Options Available



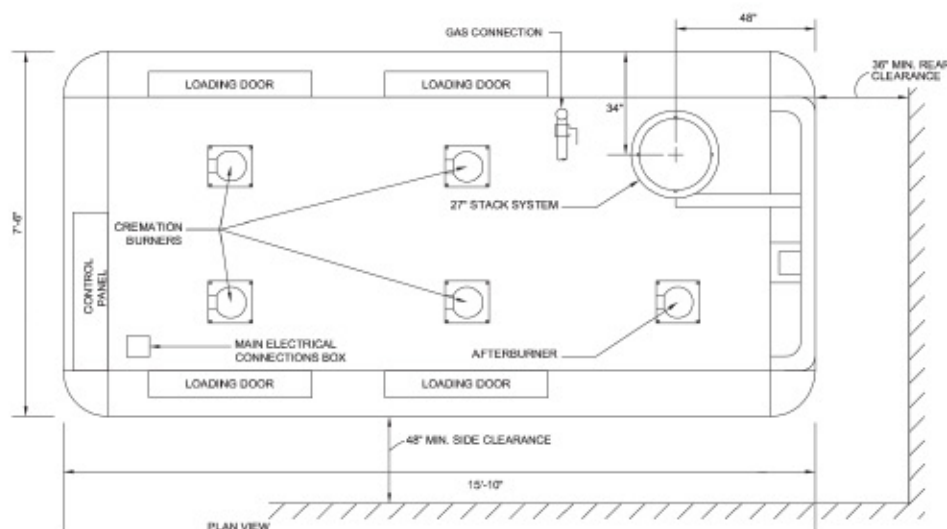
Model A-250P-Quad "Hot Hearth" Cremation Equipment

American Crematory is proud to introduce the A-250P-Quad. The "Quad" was the first animal crematory with four individual cremation chambers. Each chamber is equipped with its own combustion system which allows each chamber to operate independently of the others. Built on the "Trilogy" platform the A-250P-Quad has the latest in combustion control technology, providing greater efficiency and productivity. With four individual cremation chambers and four individual hydraulic loading doors the Quad is ideal for individual/private cremation and is extremely witness friendly.



Remains Removal Cart

The animal remains removal cart is of a steel frame construction, finished with a powder coated surface. The large work space allows for easy access to sort through remains.



A-250P-Quad Specifications

Length	15'10" (4.5m)
Width	7'6" (2.13m)
Height	8'4" (2.5m)
Weight	30,000 Lbs. (13,607 kg)
Installation Clearance Required	8' min. (2.44m)
Fuel	Natural Gas, Propane, Butane, Can be Modified to Accept Diesel Oil
Electrical	220V/60Hz/1 Phase or 3 Phase (Nationally) 240V/50Hz/1 Phase or 3 Phase (Internationally)
Maximum Fuel Rating	3.5MMBTU/HR @ 3333 CFH
Panel	Right, Left or Remote
Warranty	2 year "Best in Class"

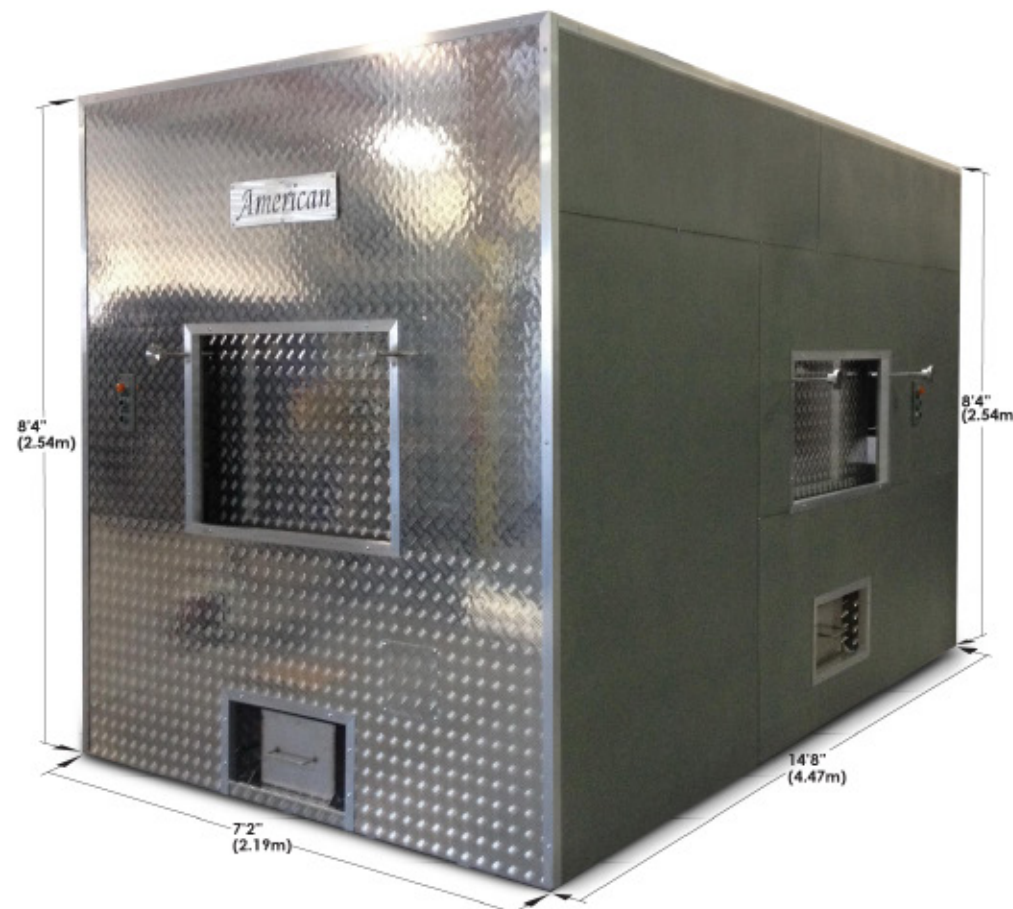
Available in a wide range of colors allowing you or our team to design a comforting setting for your customers.

Lease & Finance Options Available

Model A-200P-3 "Hot Hearth" Cremation Equipment

The American A-200P-3 is ideal for facilities that want completely private cremations while processing multiple pets at the same time. Our Multi-Chamber units are configured to meet your specific needs. The "Triple", as it is commonly referred to, has one large chamber in the front and two smaller chambers, one on each side. Each chamber is independently operated. The multi-chamber units give your business an advantage over the competition. All of the American models come standard with independent hydraulic loading doors, no counterweight or "cooler" style loading doors.

Multi-Chamber units can be wrapped for a very appealing visual experience for your clients while witnessing of private cremations. Customers can choose from an electromechanical control system or PLC based control system with Touchscreen.

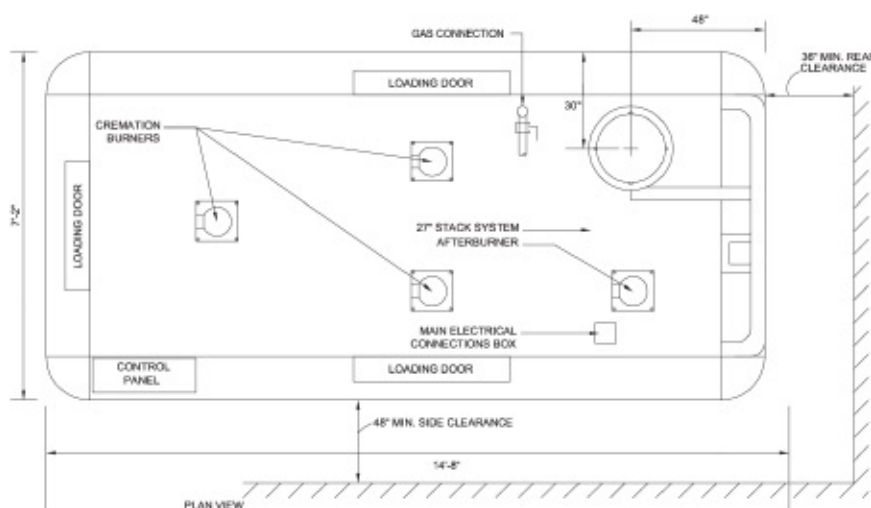


A-200P-3 Specifications

Length	14'8" (4.47m)
Width	7'2" (2.19m)
Height	8'4" (2.54m)
Weight	30,000 Lbs. (13,608 kg)
Installation Clearance Required	9' min (2.7m)
Fuel	Natural Gas, Propane, Butane, Can be Modified to Accept Diesel Oil
Electrical	220V/60Hz/1 Phase or 3 Phase (Nationally) 240V/50Hz/1 Phase or 3 Phase (Internationally) 60 AMP Minimum Requirement
Maximum Fuel Rating	2.5MMBTU/HR @ 2380 CFH
Panel	Right, Left or Remote
Warranty	2 year "Best in Class"

Available in a wide range of colors allowing you or our team to design a comforting setting for your customers.

Lease & Finance Options Available



Model A-500P Equine/ Batch "Hot Hearth" Cremation Equipment

The A-500P is built for high volume and production of Segregated, Communal and Large Equine Animals. The A-500P has the largest hearth capacity and loading door opening in its class, making the insertion of large equine animals simple and dignified.

All of the features on the A-500P are designed to insure efficient and reliable operation.

The A-500P comes standard with the Trilogy Combustion Control System insuring pinpoint diagnostics making troubleshooting immediate and accurate. The multi-chamber design and fuel/oxygen control system provides maximum efficiency, complete combustion and rapid cremation times.



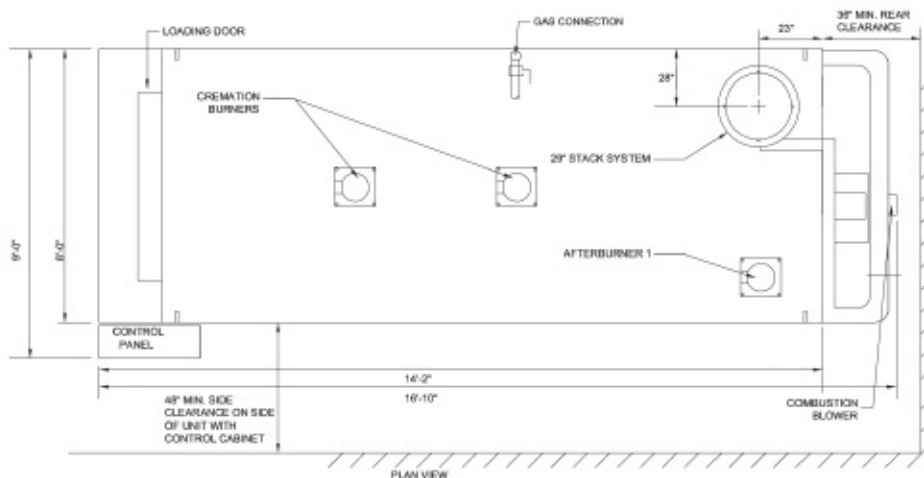
A-500P Equine/ Batch Specifications

Length	18'10" (5.5m)
Width	8'0" (2.44m); 9'0" with panel (2.7m)
Height	10'10" (3.05m)
Door Width	6'0" (1.88m)
Weight	64,000 Lbs. (29,030 kg)
Installation Clearance Required	9' min (2.7m)
Fuel	Natural Gas, Propane, Butane, Can be Modified to Accept Diesel Oil
Electrical	220V/60Hz/1 Phase or 3 Phase (Nationally) 240V/50Hz/1 Phase or 3 Phase (Internationally) 60 AMP Minimum Requirement
Maximum Fuel Rating	3.5MMBTU/HR with 2 Primary Burners @ 3333 CFH 4.5MMBTU/HR with 4 Primary Burners @ 4285 CFH
Panel	Right, Left or Remote
Warranty	2 year "Best in Class"

Available in a wide range of colors allowing you or our team to design a comforting setting for your customers.

Lease & Finance Options Available

Equine Conveyor - Contact us for info



Model A-250WH-P "Hot Hearth" Cremation Equipment

The A-250WH-P Pet Cremation System features a larger capacity loading chamber for communal and/or small batch loads. The A-250WH-P is equipped with a secondary cremation chamber burner to insure rapid cremation times and effective cremation of segregated animals.

All of the features on the A-250WH-P are designed to insure efficient and reliable operation. The A-250WH-P comes standard with the Trilogy Combustion Control System ensuring pinpoint diagnostics making troubleshooting immediate and accurate.

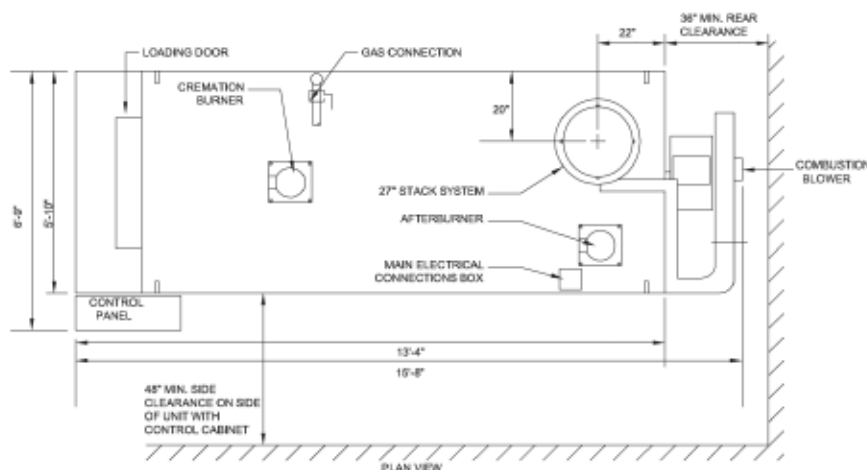
The fuel/oxygen control system provides maximum efficiency and complete combustion of emissions. "Throat Air Control" & "Hearth Air Control" allows the operator the ability to effectively control the cremation process and decrease cremation times.

Minimize Downtime

With the American "Trilogy" Combustion Control System (shown here) you get the advantage of increased fuel efficiency, advanced monitoring and diagnostic capabilities.



The "Trilogy" system allows for immediate and accurate troubleshooting, decreasing and/or eliminating costly down time. American Crematory Equipment Company is proud to offer a wide range of operating systems and technology to meet every customer's needs.



A-250WH-P Specifications

Length	15'8" (4.57m) with Blower
Width	5'10" (1.78m); 6'9" (2.06m) with Panel
Height	8'4" (2.5m)
Door Width	45" (1.14m)
Weight	28,000 Lbs. (12,700 kg)
Installation Clearance Required	8' min. (2.44m)
Fuel	Natural Gas, Propane, Butane, Can be Modified to Accept Diesel Oil
Electrical	220V/60Hz/1 Phase or 3 Phase (Nationally) 240V/50Hz/1 Phase or 3 Phase (Internationally)
Maximum Fuel Rating	2.25MMBTU/HR @ 2142 CFH
Panel	Right, Left or Remote
Warranty	2 year "Best in Class"

Available in a wide range of colors allowing you or our team to design a comforting setting for your customers.

Lease & Finance Options Available

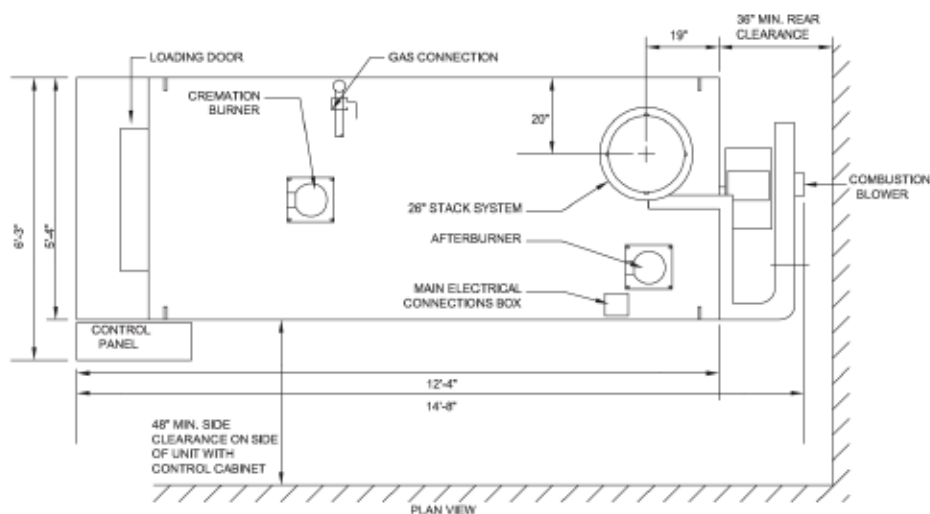
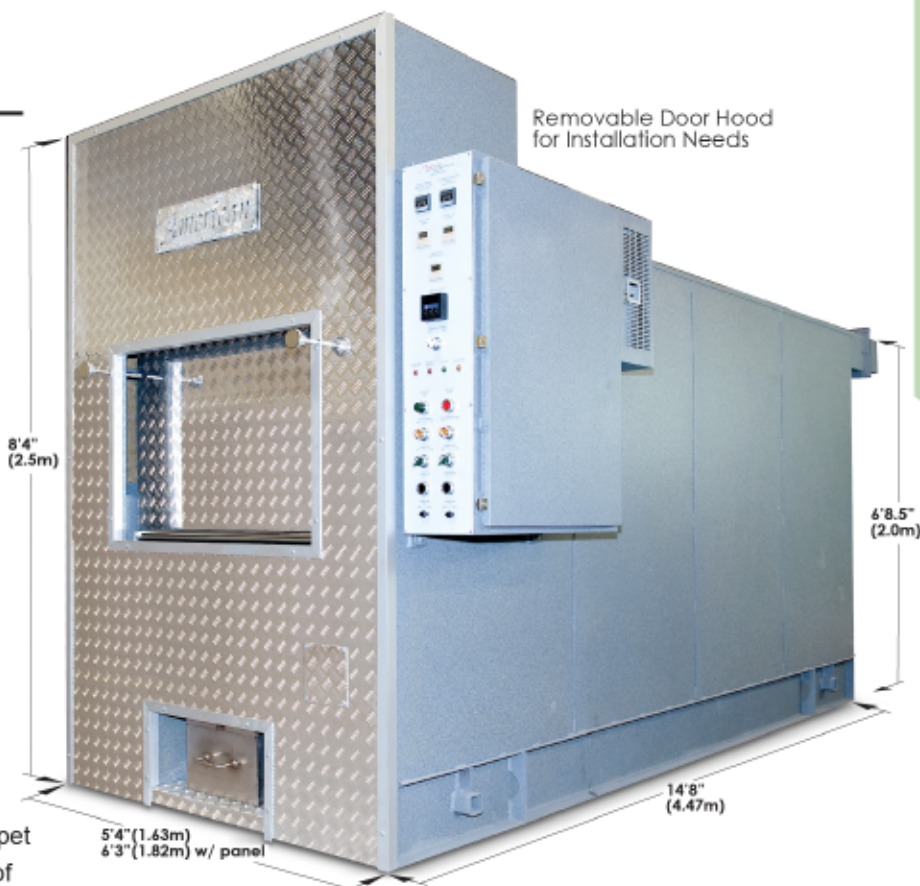
Model A-200P-HT "Hot Hearth" Cremation Equipment

The A200P-HT is the premier cremator for animal aftercare, veterinarians, humane societies and pet cemeteries. This model pet cremator is ideal for entry level, expansion or upgrading to meet your specific needs. The A-200P-HT offers best in class efficiency and the flexibility to perform individual, communal or small to medium batch cremations. The primary feature on the A-200P-HT is "Throat Air" and "Hearth Air" Control. Throat Air allows the operator the ability to effectively control and eliminate stack emissions. Hearth Air allows the operator full control of the primary chamber over fire air which effectively decreases cremation times. Additionally the combustion process is cycled and monitored by automatic temperature and timer controls which ensure fuel efficiency.

A-150-P Also Available

The A-150-P Pet Cremation System is our entry level pet cremation system designed for individual cremations of small to medium animals. The A-150-P provides the best value, performance and efficiency in its class.

For A-150-P specifications and more details please call (800) 396-2254.



A-200P-HT Specifications

Length	14'8" with blower (4.47m)
Width	5'4" (1.63m); 6'3" with Panel (1.82m)
Height	8'4" (2.5m)
Door Width	40" (1.02m)
Weight	23,000 Lbs. (10,433 kg)
Installation Clearance Required	8' min. (2.44m)
Fuel	Natural Gas, Propane, Butane, Can be Modified to Accept Diesel Oil
Electrical	220V/60Hz/1 Phase or 3 Phase (Nationally) 240V/50Hz/1 Phase or 3 Phase (Internationally)
Maximum Fuel Rating	1.75MMBTU/HR @ 1666 CFH
Panel	Right, Left or Remote
Warranty	2 year "Best in Class"

Available in a wide range of colors allowing you or our team to design a comforting setting for your customers.

Lease & Finance Options Available

Our 24/7 Service Commitment

American Crematory Equipment Co. is pleased to be available 24 hours a day, 7 days a week for troubleshooting, service, and repair of all makes and models of crematory equipment. It is our goal that your facility be up and running as soon as possible when we are called to help. We are proud to offer a 24/7 phone hotline to help you troubleshoot for the quickest resolution to your problem. If necessary, we will arrange for prompt service at your location.

In addition, we offer a complete Tune up/Calibration/ Refractory Inspection or PMI (Preventative Maintenance Inspection) which includes a 5 page written report on the condition of your equipment to help you stay in compliance with your local air quality regulations. Call us to help maximize fuel efficiency, minimize emissions, and reduce your cremation time.

Equipment Upgrades Offered:

- Upgrade existing equipment
- Stack replacement
- Hot hearth conversions
- PLC upgrades
- Operating system upgrades
- Combustion control upgrades
- Draft system conversions



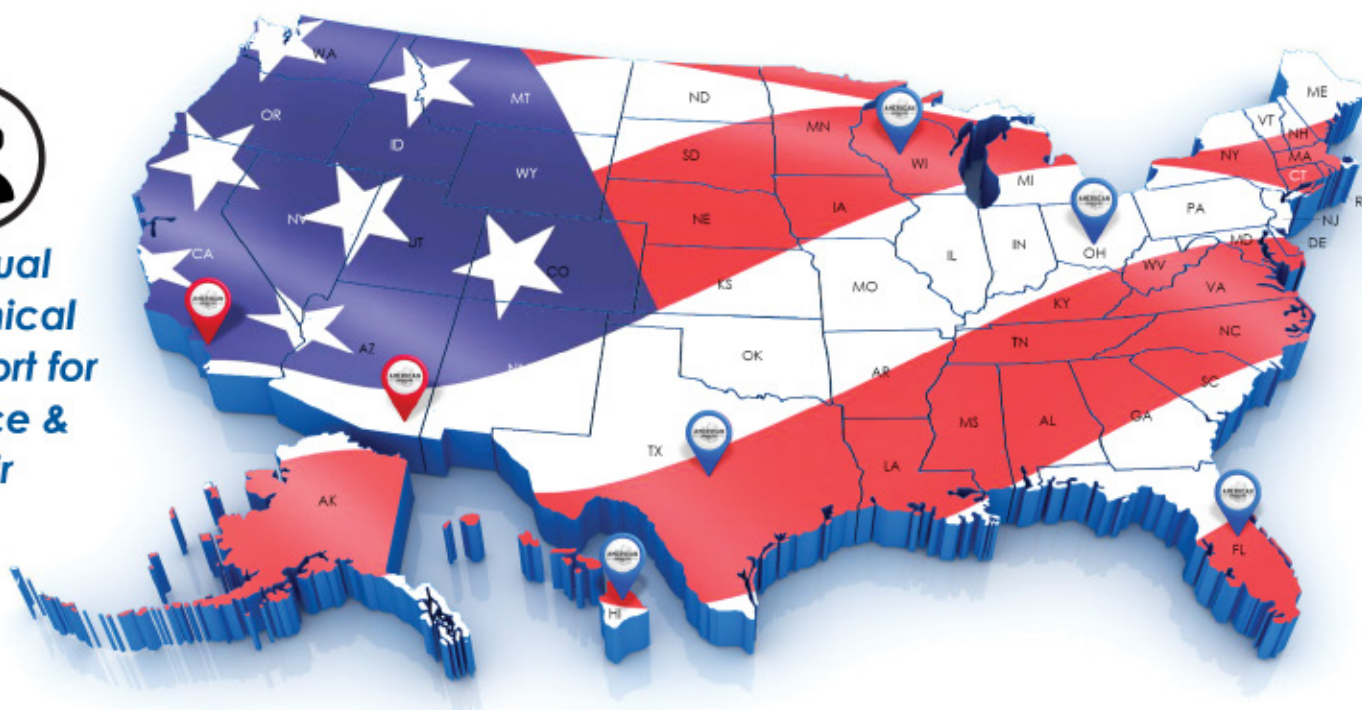
American Crematory Equipment Co.
 carries a **\$2,000,000 liability insurance**
 coverage program associated with
 our employees & workmanship.



"SERVICE IS EVERYTHING"



**Bilingual
 Technical
 Support for
 Service &
 Repair**



Refractory Repairs

Our field technicians are factory trained on all makes and models of crematory equipment. American Crematory will provide all labor, materials, and equipment to complete your repairs. We will not ask you, the customer, to provide any labor or tools for the job.

Our Proprietary Refractory Products are engineered with the customer's volume and demand in mind. Our "Good, Better, Best" product line gives our customers the ability to choose the product that fits their needs.

We guarantee all of our products and workmanship for one year and your complete satisfaction.

Interlocking Brick Upgrade Option

American Crematory is proud to offer our Interlocking Super Duty Fire Brick upgrade

American Crematory's proprietary interlocking fire brick has been designed and tested for structural strength and durability. The interlocking feature helps keep all perimeter and support walls from moving, shifting or leaning due to expansion and contraction, most commonly referred to as thermal shock. The 3200 degree fire brick rating along with our proprietary "Brick Lock" Mortar will add longevity to the refractory lining of your equipment.



- Our Super Duty Brick is rated at 3100 degrees F., and has a higher cold crush strength than any other brick used by our competition.
- Our Americast Castables are designed for maximum life. We have tested our castables in the most extreme conditions and they have shown superior longevity and wear compared to other products used in our industry.
- Our Castables are designed and installed based on your throughput: "Low Volume", "Medium Volume", "High Volume", and are rated up to 3200 degrees F.



We stand behind our Refractory products and repairs far longer than any of our competitors

~ 1-2 year from date of installation

*Depending on product



BEFORE



AFTER

Ask about our Americast Castables

American Crematory has developed, tested, and implemented the highest quality proprietary refractory products in the industry. We are extremely proud of our products and the longevity they add to our premier product line of cremation equipment. We also developed these products to install in the equipment we service and repair. Our goal is to bring our clients the best service and products in the industry, all of which are manufactured in the USA.





Crematory Work Station

Make receiving cases faster and easier with this workstation. Cremation containers, forms, supplies and tools are clean, dry and organized ready to use whenever and wherever you need them. The Crematory Work Cart is tough—built from durable, heavy-gauge steel and engineered to stand up to everything your crematory can dish out. The optional accessory bundle lets you customize your workstation to meet your operation needs.

- Easy to customize with optional shelves, baskets, and hooks.
- Upright container storage saves valuable floor space.
- Seriously tough, all-steel construction, 600 lb. capacity.
- Fold-up table for assembling containers and paperwork.
- Heavy-duty wheels for easy mobility.

ACC00221 Work Station

Storage & Cooling Racks

American Crematory's custom designed storage racks allow you to store numerous standard and cardboard caskets in a minimal space. Each shelf has rollers every 12 inches for easy loading and unloading from your lift table. Built to last, sections are either bolted or welded together for easy assembly (shippable units are bolted not welded). All portable racks are available in either side load or front load, and come with heavy duty casters. Laminate boards can also be provided upon request. Call for pricing.



- ACC0012** 3 Body Rack
ACC0013 3 Body Rack - Stainless Steel
ACC0014 4 Body Rack
ACC0015 4 Body Rack - Stainless Steel

Cremation Pan Cooling Rack

Cooling racks for your cremation pans. Available in 2 or 4 pan configurations. Custom racks for your specific needs. Please call for more information.

- PTU0006** Cremation Pan Cooling Rack - 2 Shelves
PTU0007 Cremation Pan Cooling Rack - 4 Shelves





Coolers & Custom Rack Systems

Our coolers are custom designed to fit your facility's space requirements. Please call us to find out how we can help you maximize your capacity with a custom cooler and custom rack system.

EQP3BCE	3 Body Cooler - Economy (<i>not shown</i>)
ACC0087	Optional Mounted Casters for 3 Body Cooler



Powder Coated Cadaver Lift

Powder coated cadaver lift makes it easy to lift, load, and unload cadavers. The 5th wheel drive system allows for easy maneuverability in tight spaces, even when fully loaded. This lift also allows single user unassisted safe operation and is best suited for custom cadaver rack systems. Inquire now.

AMA0036	Cadaver Lift
----------------	--------------

Refractory Lined and Stainless Steel Stack Options

Refractory Lined Stacks

American Crematory Equipment Co. provides 4-1/2" of 2500°F "no joint", cast liner for our premier refractory lined stacks to safeguard your facility. We make stacks for all makes and models to meet your specific requirements.

Specifications

14 gauge steel or stainless steel

4-1/2 inches of 2500°F cast liner

3 & 5 ft. flagged sections

Painted to custom specifications

Made to order per stack diameter

Custom made offsets

Stainless Steel Stack with Opacity System



Containers, Discs, & Rollers



Temporary Plastic Urn

The American Crematory temporary plastic urn is a container suitable for the temporary storage of cremated remains, and is sold in cases of 36.

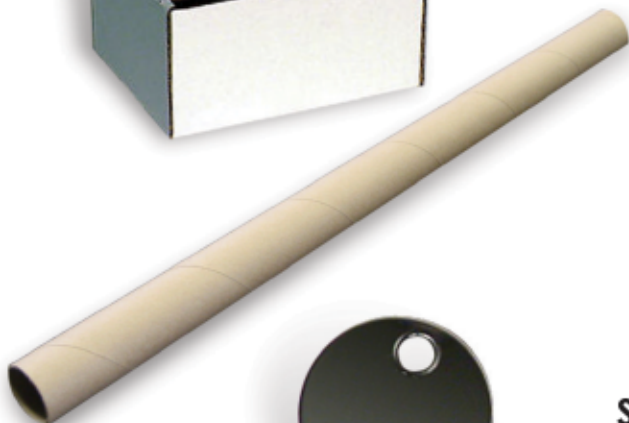
ACC0049 Black Temporary Plastic Urn



Cardboard Mailers

Cardboard mailers for the temporary cremated remains containers are also available. Cardboard mailers are die-cut for easy assembly and come in bundles of 50.

ACC0045 Cardboard Mailers for Temporary Urns



Cardboard Cremation Rollers

Cardboard cremation rollers allow easy loading of a container into the cremation chamber and help reduce wear on the crematory floor.

ACC0043	Standard Size	1-7/8" dia. x 20"	100 rollers/case
ACC0044	Heavy Duty	2-1/2" dia. x 18"	75 rollers/case



Stainless Steel Identification Discs

Identification discs are stainless steel and pre-numbered. Preprinted name and address available upon request. Standard size 1-1/4" diameter; also available in 1-1/2" diameter. Minimum of 250 discs per order.

ACC0046 Stainless Steel Identification Discs



Digital Scale with Ramp

Simple and safe way to weigh each case prior to cremation. Please call for more details. (Lift table not included).

AMA0016 Digital Scale with Ramp



Small Case Pan

The American small case pan is made of 10 or 12-gauge stainless steel and equipped with handles on each side for easy positioning. The pan's compact size allows it to fit in every type of cremation chamber.

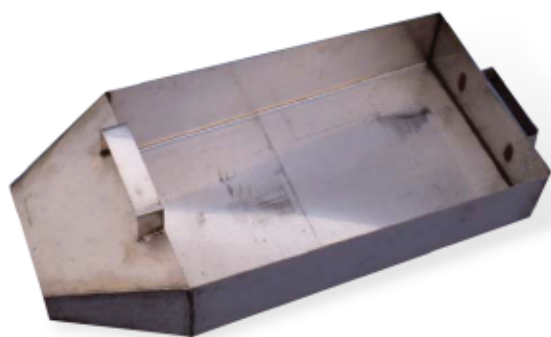
PTU0004 Small Case Pan (Stainless Steel)



Custom Ash Pans

Ash pans are custom made to fit any crematory with a durable stainless steel or black iron construction. We can fit any make or model of cremator. Please specify model of cremator.

CUSTOM MADE TO ORDER



Transfer Pan

The American transfer pan was designed to place the cremains from the ash pan to the transfer pan for cooling, then to the processor. The unique, light weight, stainless steel pan is easy to handle and is a favorite tool used by our customers.

PTU0005 Transfer Pan Stainless Steel

American High Temperature Vacuum System

The American High Temperature Vacuum System is ideal for picking up cremation residue.

- Portable with casters for easy movement
- Powerful 2 HP motor
- 60" aluminum extension with clean-out tools
- Heavy duty hose and 30 foot cord

VAC0001 American High Temperature Vacuum System





Repositioning/Clean-out Tool

The American repositioning tool is custom designed for easy positioning and clean-out of remains. This tool has a convenient 45° angle for easy usage. Although highly durable, it also helps prevent damage to your hearth because of its light weight construction.

ACC0069 Set Screw | **ACC0070** Threaded | **ACC0071** 10 ft. Pole



Clean-Out Block Brush

A heavy duty steel clean-out brush designed to prevent damage to your hearth. This custom brush has a 45° angle allowing for easy removal of cremated remains. Replacement of worn bristles is made by removing four screws and placing a new block brush in.

ACC0003 Clean-out Block Brush | **ACC0005** Wire Replacement Brush



Clean-out Strip Brush

The American heavy duty brushes allow you to sweep your cremation chamber with less abrasion to the surfaces of the chamber, increasing the life of your refractory. Available with either a 1/2 inch threaded or 3/4 inch set screw coupling, the brush head connects to 3/4 inch EMT available at your local hardware store. Available in 12 inch or 6 inch width (poles not included).

ACC0036 6" Brush 3/4" Set Screw | **ACC0037** 6" Brush 1/2" Threaded
ACC0038 12" Brush 3/4" Set Screw | **ACC0039** 12" Brush 1/2" Threaded
ACC0040 12" Brush with Pole



Hand Magnet

A powerful magnet to draw ferrous materials out of the remains prior to processing. Quick release handle to clear material from magnet.

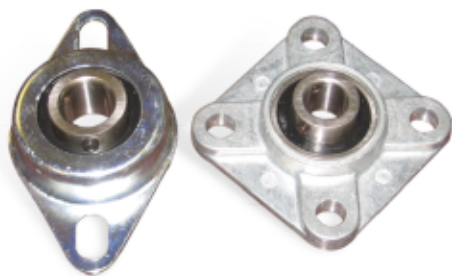
ACC0035 Hand Magnet

Urn Loader

Use this adjustable loading funnel to easily transfer cremated remains into an urn for final disposition. Loading height is adjustable and features a sliding stopper on the funnel neck.

PTU0008 Powder Coated Standard Steel
PTU0009 Stainless Steel





Processor Pot Bearings

PBB0015	Pot Bearings for American Crematory Processor
PBB0016	Pot Bearings for B&L Processor
PBB0017	Pot Bearings for IEE/Matthews Processor



Processor Pot Blades

- Stainless Steel, laser cut, tig welded
- Pet Cremation Suggested Use: Straight Blades
- Human Cremation Suggested Use: Swivel Blades

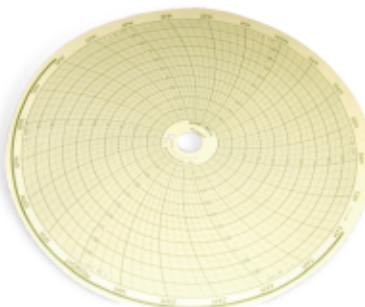
MPS0127	Pot Blades for American Crematory Processor*
MPS0129	Pot Blades for B&L Processor
MPS0131	Pot Blades for IEE/Matthews Processor*

*Heavy duty blades also available for American Crematory & IEE/Matthews Processors



Complete Thermocouple Sets

TCP0007	12" Thermocouple Set
TCP0008	18" Thermocouple Set
TCP0009	24" Thermocouple Set



Honeywell & Partlow Chart Recorder Paper

ACC0059	Honeywell 7 Day Chart Recorder Paper
ACC0060	Honeywell 24 Hour Chart Recorder Paper
ACC0061	Partlow 7 Day Chart Recorder Paper
ACC0062	Partlow 24 Hour Chart Recorder Paper



Replacement Chart Recorder Pens

ACC0054	Honeywell Chart Recorder Pen, Red
ACC0055	Honeywell Chart Recorder Pen, Blue
ACC0056	Honeywell Chart Recorder Pen, Purple
ACC0057	Partlow Chart Recorder Pen, Red
ACC0058	Partlow Chart Recorder Pen, Green



Hand-Held Metal Detector

ACC0029	Hand-Held Metal Detector
---------	--------------------------



Replacement Filter

- ACC0041 Replacement Filter for Ventless Processing Station, 16" x 16" x 1"
ACC0042 Replacement Filter for B&L



ACF Relay

- CMP0002 ACF Relay



Flame Pak

- CMP0003 Flame Pak



Timofier U300

- CMP0004 Timofier U300



Airflow Switches

- CMP0005 Grey Spring Airflow Switch
CMP0006 Blue Spring Airflow Switch
CMP0034 Atunes Airflow Switch



Ignitors and Flame Rods

Ignitors and Flame Rods available for all crematory makes and models

Replacement parts available for all makes and models of cremators.
Please call for more information.



Standard Face Shield

Standard face shields feature a high-impact polycarbonate lens, 8" x 15-1/2", 0.06" thickness, pre-injected curved lens, with a locking adjustable headpiece. Not for Welding. Meets ANSI Z87.1+ Standard. Replacement shields available.

ACC0025	Clear Face Shield
ACC0026	Clear Replacement Shield
ACC0027	Green Face Shield
ACC0028	Green Replacement Shield



Heat Reflective Face Shield

Lightweight clear or tinted polycarbonate face shields featuring a thin layer of gold to reflect up to 99% of infrared (IR) and Ultraviolet (UV) radiation. The gold layer is protected by a scratch resistant coating. Shield is attached to an adjustable headgear.

ACC0024	Heat Reflective Face Shield
---------	-----------------------------



Earmuff Hearing Protection

Lightweight muff-style hearing protector with universal adjustment for under-the-chin, over-the-head or behind-head wear.

ACC0018	Earmuff Hearing Protection
---------	----------------------------



N95 Particulate Respirator

Includes inner foam for a custom seal and a dual head strap for optimum fit. Maintenance-free. NIOSH approved.

ACC0023	N95 Particulate Respirator, Box of 20
---------	---------------------------------------



Reflectorized Aluminum Apron

The American apron provides the highest quality materials and offers superior insulation against radiant heat. 16 oz. aluminized flame retardant rayon reflects up to 90% of all radiant heat up to 1000° F.

ACC0011	Aluminum Apron, One Size Fits All
---------	-----------------------------------

Reflectorized Aluminum Jacket

The outside of this jacket is aluminized to reflect radiant heat. It has no pockets to trap hot particles and is oversized to fit over work clothes. The jacket has snaps at the wrist, a flap front with covered snaps, and a stand-up collar that's lined with green flame-resistant cotton.

ACC0012	Medium
ACC0013	Large
ACC0014	X-Large
ACC0015	XXL





Aluminized Safety Gloves

These aluminized backed gloves feature a cowhide palm, wool sock lining, keystone thumb and reinforced index finger. Provides radiant heat protection without sacrificing flexibility. A necessity for every operator.

ACC0001 Aluminized Safety Gloves, 18"



Leather Safety Gloves

100% brown leather gloves provide flexibility and protection.

ACC0002 Leather Safety Gloves, 14"



Personal Eyewash Station

Dual-bottle eyewash station for temporary first-aid until victim can reach a larger unit. Includes two 16 oz. bottles with twist-off tops. Durable plastic station available. Directions printed on station for fast reference.

ACC0030 Eyewash Station, Dual Bottle
ACC0031 Eyewash/Irrigate Bottle



Personal First Aid Kit

Compact, lightweight kit contains an assortment of practical, single-use disposable items to treat injuries in a sanitary and simple way. Fits easily into backpack, toolbox, athletic bag and glove compartment. Ideal for travel, workshops, personal sports, and recreational needs. Meets ANSI Z308.1 Standard.

ACC0034 Personal First Aid Kit

Portable Eyewash Station

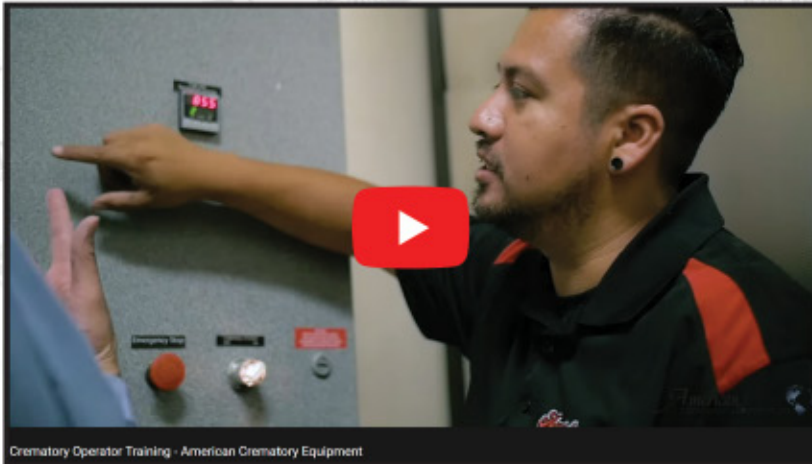
Lack of an emergency eyewash station is one of the top OSHA citations. Protect employees as required by law and guard against personal injury claims. Station comes with water preservative. Change water every 90 days. Compliance - ANSI Z358.1. One-hand operation, gravity fed, 15-minute flow time. Holds up to 14 gallons of potable water, no plumbing required. Portable unit measures 11-1/2" x 19-1/2" x 25" and includes mounting bracket, inspection tag, and preservative.

ACC0032 Eyewash Station





We have plenty of informational videos up on YouTube for you to browse through, here are a few of our most popular ones.
Just click on the thumbnail to view the video online.



Crematory Operator Training -
American Crematory Equipment



Veri-Flame Burner
Control Discontinued



American Crematory Equipment
Crematory Unit Upgrade



Processor Blade Replacement



Remains Processors



The American Difference - Refractory



MANUFACTURING WITH PRIDE™



AMERICANCREMATORY.COM

14530 ANSON AVE., SANTE FE SPRINGS, CA 90670
CORP. OFFICE: (562) 926-2876 • TOLL FREE (800) 396-2254 • Fax: (562) 926-2880

©2022 American Crematory Equipment Co., All rights reserved.