



A-2000



A-2000-S



A-3000



A1-Deluxe

**LOOKING FOR A METAL RECYCLING PROCESSOR?  
PLEASE CONTACT US FOR MORE DETAILS**

#### **Processor Warranty Agreement**

Motor - 6 Month Warranty  
Electrical Switches - 6 Month Warranty

There is no warranty for the following components:  
Blades • Bearings • Drive Shaft • Processor Pot

American Crematory is not responsible for the use by owner or how it is used; therefore, we are unable to warranty the items listed above.

**WWW.AMERICANCREMATORY.COM**

**Corp. Office: (562) 926-2876 • Toll Free (800) 396-2254 • Fax: (562) 926-2880**



# PROCESSOR OPERATING MANUAL

For models:

A-2000

A-2000-S

A-3000

A1-Deluxe



A-2000

A1-Deluxe

A-2000-S

A-3000

[WWW.AMERICANCREMATORY.COM](http://WWW.AMERICANCREMATORY.COM)  
Corp. Office: (562) 926-2876 • Toll Free (800) 396-2254

# TABLE OF CONTENTS

General Information.....	2
Operating Instructions.....	3
Blade & Shaft Replacement.....	4
Step-by-Step Visual Guide for Blade Replacement.....	5-6
Additional Resources.....	7
Replacement Parts.....	7
Warranty.....	Back Page



## General Information

- The American Electric Cremated Remains Processor is a self-contained unit and requires no installation.
- Engineered to reduce bone fragments to fit into a standard sized urn.
- The A-2000 is equipped with a 1 horsepower industrial rated motor while the A-2000-S and up is a 1.5 horsepower motor. All include a direct drive to the drum shaft and an on/off switch with overload protection.
- Blades pulverize bone fragments in an average time of 30 seconds or less.

# OPERATING INSTRUCTIONS

## BEFORE OPERATING YOUR PROCESSOR

Carefully check for any damage that may have occurred during time of shipment. In the event there are any damages, please file a claim with your delivering carrier within 24 Hours and notify your American Crematory Equipment Co. representative.

- 1 Plug into 115 volt outlet, with ground.
- 2 Attach stainless steel drum to drive unit. The drive unit has a 1.25" socket at the center on top. The drum has a 1.25" bolt at bottom. Center the drum onto the socket, the drum will sit flat on top of drive unit when socket and bolt are engaged.
- 3 For the A-2000, latch stainless steel drum to drive unit by lining up the two side latches. Simply pull latches upward to hook bracket mounts on each side of drum and secure drive.
- 4 Remove top lid from stainless steel drum. (The lid fits snug to drum). At the bottom of the drum are processing blades.
- 5 DO NOT PUT HANDS IN DRUM WHEN DRUM IS ATTACHED TO DRIVE UNIT OR START PROCESSOR WITHOUT LID ATTACHED. **\*\*SERIOUS INJURY CAN OCCUR\*\***
- 6 Before processing cremations, remove all metal from cremains with a hand magnet. Failure to remove metal will damage drum.
- 7 After all metal is removed, empty cremains into drum. Attach lid to drum, ensure the lid is securely sealed on all models! If the lid doesn't seal properly, remains can seep out.
- 8 To operate the processor, simply turn the switch in the front of the base unit up to the ON position. The process will take approximately 30 seconds. Turn switch down to OFF position. Cremains are now processed. Remove drum from drive unit and remove lid. Turn drum over to pour into container.

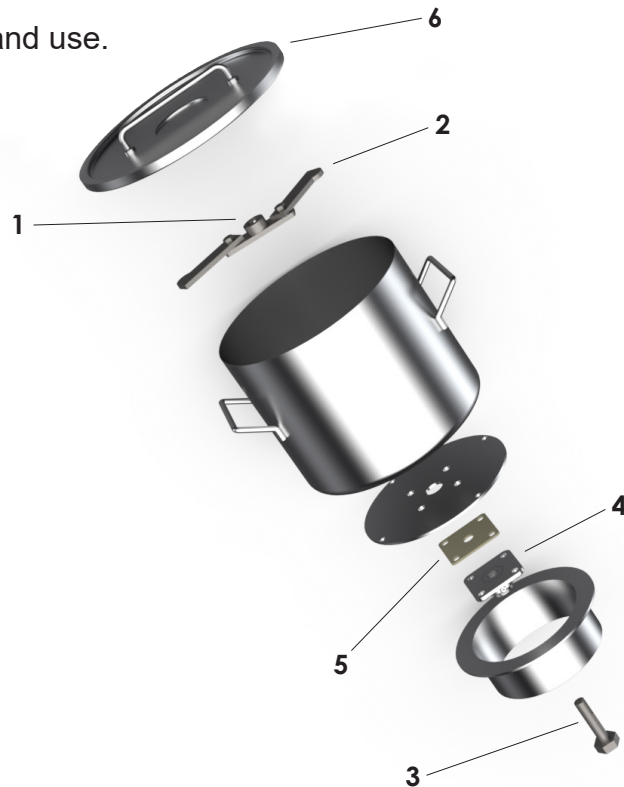


A-2000-S

# BLADE & SHAFT REPLACEMENT

- ▶ Using an 1/8" Allen Wrench, loosen ① Blade Set Screw
- ▶ Once you loosen the Blade Set Screw, the blades should pull up off the shaft.
- ▶ In the event that you cannot pull the blades from the shaft, turn the pot upside down and loosen the set screw using an 1/8" Allen Wrench. Flip the pot back over and hit the top of the shaft, using a block of wood or center punch. The shaft should drop out of the drum, freeing the blades.
- ▶ Flip the pot back over again and replace the shaft. Push the shaft ④ against the American pot bearing ⑤ then back it off 1/8". This 1/8" space is important to avoid any rubbing. Apply a drop of Loctite® to the end of the set screws and tighten the set screws on the American pot bearing. ⑤
- ▶ Flip the pot over one last time and place American blades on to the shaft, also lifting blades up an 1/8" to avoid any rubbing. Apply Loctite® onto ① Blade Set Screw and tighten.
- ▶ Key way must be installed onto the blade.
- ▶ The processor pot will be ready to plug in and use.

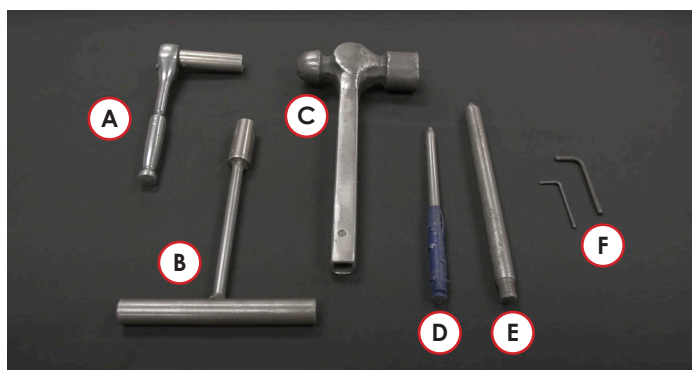
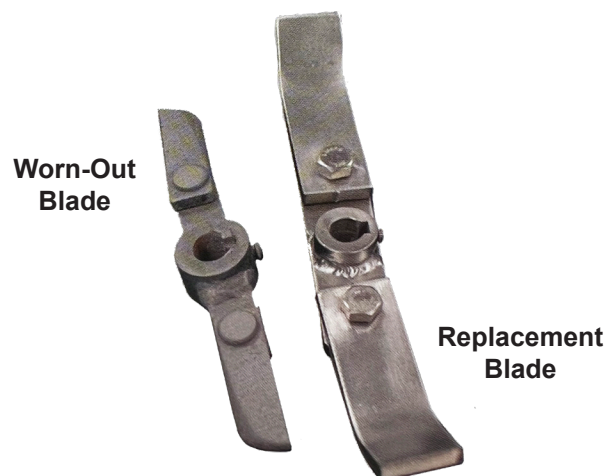
- ① Blade Set Screw
- ② American Blades
- ③ American Shaft
- ④ American Pot Bearing
- ⑤ Felt Gasket
- ⑥ American Drum Lid



# STEP-BY-STEP VISUAL GUIDE

## Recommended Tools

- (A) 9/16 Ratchet
- (B) 9/16 Socket with Extension
- (C) Ball-Peen Hammer
- (D) Metal Punch A
- (E) Metal Punch B
- (F) 1/4 & 3/16 Inch Hex Head Key Allen Wrench



1. Remove set-screw with hex head allen wrench.



2. Do NOT lose 1/4 inch key way.



3. Remove worn blade.

## STEP-BY-STEP VISUAL GUIDE (CONT.)



**2. Place key way back into replacement blade.**



**5. Slide on securely.**



**6. Make sure blade lays on top of washer welded to bucket.**



**7. Replace set-screw and tighten with allen wrench.**



**8. Check to see that blades spin.**



**8. Place bucket on unit and lock into place.**

# ADDITIONAL RESOURCES



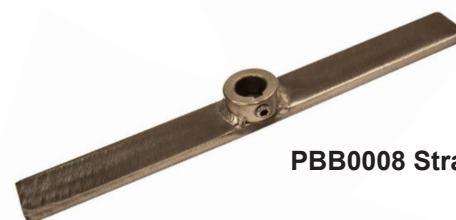
Visit our YouTube channel online to find troubleshooting and “how to” videos on processor blade replacement, as well as many other American Crematory Equipment Company products.

[www.youtube.com/watch?v=CUq86dJDCT0](http://www.youtube.com/watch?v=CUq86dJDCT0)

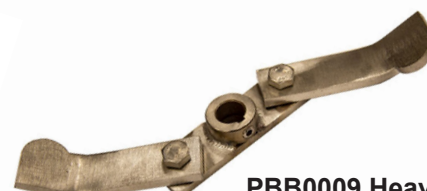
Replacement Parts	SKU
American Processor Blades, Swivel • Swivel Blades Suggested Use: Human	PBB0007
American Processor Blades, Straight • Swivel Blades Suggested Use: Pet	PBB0008
American Processor Blades, Heavy Duty	PBB0009
American Processor Bearings	PBB0015
American Processor Shaft	PBB0018
Processing Pot (Amer. A-2000)	PBB0001
Processing Pot (Amer. A-2000-S)	PBB0002
Processing Pot (Amer. A-3000)	PBB0045
Processing Pot (Amer. A1-Deluxe)	PBB0047



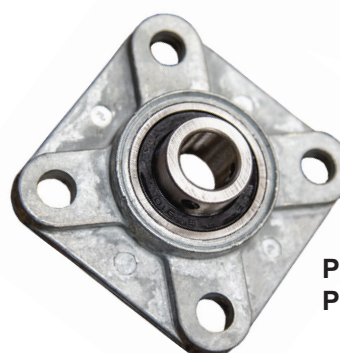
PBB0007 Swivel



PBB0008 Straight



PBB0009 Heavy Duty



PBB0015  
Processor Pot Bearing



A-2000-S, A-3000, A1-Deluxe



A-2000